



EDUCATION, HEALTH & COMMUNITY FACILITIES

PAPER 9

MID & EAST ANTRIM BOROUGH

LOCAL DEVELOPMENT PLAN PREPARATORY STUDIES

SEPTEMBER 2015



Education, Health & Community Facilities within Mid and East Antrim Borough Council.

- Purpose:**
- To inform members of the broader government and regional planning policy context in relation to health, education and community facilities;
 - To provide an overview of the existing provision of education, health and community facilities within Mid & East Antrim.

Content: **The paper provides information on:**

- government strategies relating to education, health and the community;
- the regional planning policy context for education, health and community proposals;
- the role of the local development plan in the provision and protection of land for education, health and community uses;
- an overview of existing area plans;
- an overview of the education, health and community facilities within Mid and East Antrim.

Recommendation: That the Committee notes the findings and consider how this preparatory study shall be used to inform subsequent policies and proposals in the Local Development Plan.

SECTION 1 – INTRODUCTION**SECTION 2 – GOVERNMENT STRATEGIES****SECTION 3 – LOCAL PLANNING POLICY CONTEXT – EXISTING AREA PLANS****SECTION 4 – PROFILE OF MID & EAST ANTRIM DISTRICT****SECTION 5 – CONCLUSIONS****APPENDICIES**

FIGURES

Figure 4.1	Map of Education Institutions within Mid & East Antrim
Figure 4.2	Map of Education Institutions within Ballymena Town
Figure 4.3	Map of Education Institutions within Carrickfergus Town
Figure 4.4	Map of Education Institutions within Larne Town
Figure 4.5	Medical Assets in Mid & East Antrim
Figure 4.6	Residential & Nursing Homes in Mid & East Antrim
Figure 4.7	Adult Use of Libraries within the 11 Northern Ireland Council Areas

TABLES

Table 2.1	PfG commitments to be delivered by Department of Education
Table 2.2	PfG commitments to be delivered by Department of Health, Social Services and Public Safety
Table 4.1	Types of schools within Northern Ireland
Table 4.2	Number of GP Practices and Dental Surgeries within Mid & East Antrim
Table 4.3	RQIA registered nursing homes within Mid & East Antrim
Table 4.4	RQIA registered residential homes within Mid & East Antrim
Table 4.5	Youth Service Geographical Priority Areas within Mid & East Antrim
Table 4.6	Youth Service Priority Themes within Mid & East Antrim

APPENDICES

Appendix 1.1	Education Institutions within Mid & East Antrim
Appendix 1.2	School Occupancy and Spare Capacity 2012-13
Appendix 1.3	List of GP Practices within Mid & East Antrim
Appendix 1.4	List of Dental Surgeries within Mid & East Antrim
Appendix 1.5	List of nursing and residential homes within Mid & East Antrim
Appendix 1.6	Library NI Board Existing and Approved Opening Hours
Appendix 1.7	List of Community Centres within Mid & East Antrim



The background of the page is a grayscale photograph of a modern residential building with a courtyard. A large blue rectangular overlay covers the left side of the image. The text 'INTRODUCTION' is written in white on this blue area, and 'SECTION 1' is written in blue on the right side of the image.

INTRODUCTION

SECTION 1

SECTION 1 - INTRODUCTION

1.1 Education, health and community uses play an important role in maintaining and creating sustainable and cohesive communities. There are a wide range of facilities spread throughout Mid & East Antrim Borough Council including schools, further education campuses, libraries, hospitals, surgeries, community centres.



1.2 This paper provides an overview of the key relevant government strategies. It also sets out the regional planning policy context and the existing area plan context, as well as how the draft Strategic Planning Policy Statement (SPPS) will allow for the provision and protection of land for education, health and community facilities through the Local Development Plan.

1.3 This paper also provides an overview as to the education, health and community facilities across Mid & East Antrim Borough Council area, including details of current and future projects.

1.4 There is a strong functional linkage between this aspect of the LDP and the Council Community Plan. The Community Plan is the primary mechanism for setting objectives linked to local programmes for health, education and other public service, leisure, recreation and tourism and local economic development. This means development plans will no longer be held up waiting for Public bodies to identify their land use needs, as this will be indicated in the Community Plan.

1.5 At present, work is under way to formulate a Community Plan for Mid & East Antrim Borough. The first tentative steps in this process have been undertaken and consultants appointed to produce a Baseline Report to inform the first Community plan. This study involves a review of the six suggested Community Planning themes outlined in the NI Community Planning Foundation Programme:

1. Safety & Good Relations
2. Health
3. Leisure & Wellbeing
4. Education
5. Economic Regeneration
6. Community & Social Regeneration
7. Environment & Spatial Planning

1.6 The number and scope of themes may alter as the process advances and the final document is agreed. The emerging Local Development Plan will provide the spatial expression of many aspects of the Council's Community Plan. This preparatory paper will link with the community planning process which will help enrich the outcome.

1.7 This paper highlights that during the Local Development Plan process, the relevant authorities will be consulted to allow them an opportunity to confirm their comments expressed during the Community Plan process and identify whether there is a need for the Plan to safeguard land for future education, health and community use development. The Local Development Plan could for example include policies where presumption in favour of development is given to applications for the provision and improvement/extension of education, health and community uses within settlement development limits subject to meeting specified criteria. The LDP may also consider zoning and protection of sites for such uses.

1.8 Within Northern Ireland a key factor which will continue to affect the provision of education, health and community facilities is the budget set by the Executive, and due to this associated Departments are under increasing pressure to make reductions in spending, which may restrict the expansion of existing facilities or the development of new ones.

1.9 Northern Ireland, as in the rest of the UK, is experiencing an increase in life expectancy which is contributing to an ageing population. This poses both challenges and opportunities to society. The “Transforming Your Care”¹ paper highlights that longer life expectancy is something to celebrate and that many older people continue to enjoy good health and good quality of life. However among the “older old”, rates of ill health and disability increase dramatically and this has an impact on the health service. The Chief Medical Officer Report for 2013-14 highlights that in Northern Ireland two thirds of acute hospital beds are occupied by people over 65 years.

¹*Transforming Your Care – December 2011 – Department for Health, Social Services and Public Safety*





SECTION 2

GOVERNMENT STRATEGIES

EDUCATION

HEALTH

COMMUNITY FACILITIES

REGIONAL PLANNING POLICY CONTEXT

SECTION 2 – GOVERNMENT STRATEGIES

EDUCATION

2.1 At the highest level, the NI Executive has set out its priorities in the [Programme for Government 2011-15](#).

2.2 The Programme for Government sets out the strategic priorities for all departments and recognises the particular contribution of education to:

- growing a sustainable economy and investing in the future
- creating opportunities, tackling disadvantage and improving health and wellbeing
- building a strong and shared community
- delivering high quality and efficient public services

2.3 The Programme for Government contains 82 specific commitments, 8 of which fall to the Department of Education to deliver:

Table 2.1: PfG Commitments to be delivered by Department of Education

Commitment 21	Increase the overall proportion of young people who achieve at least 5 GCSEs at A* - C or equivalent including GCSEs in Maths and English by the time they leave school; (Including increase the proportion of young people from disadvantaged backgrounds who achieve at least 5 GCSEs at A* - C or equivalent including GCSEs in Maths and English).
Commitment 42	Improve literacy and numeracy levels among all school leavers, with additional resources targeted at areas of educational underachievement.
Commitment 43	Ensure that at least one year of pre-school education is available to every family that wants it.
Commitment 70	Significantly progress work on the plan for the Lisanelly Shared Education campus as a key regeneration project.
Commitment 71	Establish a Ministerial advisory group to explore and bring forward recommendations to the Minister of Education to advance shared education. (This commitment has been achieved and is now closed.)
Commitment 72	Ensure all children have the opportunity to participate in shared education programmes by 2015.
Commitment 73	Substantially increase the number of schools sharing facilities by 2015.
Commitment 76	We will make the Education and Skills Authority operational in 2013. (The NI Executive subsequently agreed to withdraw this commitment from the PfG).

The Department has a vision for the education sector which is to see

“Every young person achieving to his or her full potential at each stage of his or her development.”

2.4 The [Corporate Plan for Education 2012-2015](#) outlines the strategic direction for the Department and the wider education service and sets out the key priorities and objectives during the period 2012-2015. The Department also develops each year an [annual business plan](#) setting out its commitments to delivering the corporate goals and strategic objectives contained in the Corporate Plan. Annual business plans are also developed at the start of each year by the Department's Arm's Length Bodies.

2.5 Underpinning this whole process are [School Development Plans](#) which schools are required to prepare and review on a 3-yearly basis. A school's development plan sets out its key priorities for the period of the plan based on the Department's priorities for education. It includes targets for improvement, including targets for literacy and numeracy.

2.6 [The Strategic Planning and Policy Development Forum](#) (known as the Strategic Forum) is where the recognised Trade Unions, employers and sectoral support bodies have an opportunity to work with the Department to shape and influence policy development and strategic planning at an embryonic stage.

Source: <http://www.deni.gov.uk/index/about-the-department/strategic-planning.htm>

EDUCATION AUTHORITY

2.7 On 1st April 2015, the Education Authority became operational and took over all the roles and responsibility of the former Education and Library Boards. The North Eastern Education and Library Board which would have operated in Mid & East Antrim therefore no longer exists.



Types of Schools in Northern Ireland

2.8 Schools in Northern Ireland fall under two categories - grant-aided and independent. While nearly all are grant-aided, there are some independent schools. The main types of schools all receive funding from the Education Authority (EA) or directly from the Department of Education (DE). They all follow the Revised Curriculum and are regularly inspected by the Education and Training Inspectorate (ETI).

Table 4.1 Types of School within Northern Ireland

Controlled	<p>Controlled schools are managed and funded by the EA through school Boards of Governors (BoGs). Primary and post-primary school BoGs consist of representatives of transferors - mainly the Protestant churches - along with representatives of parents, teachers and the EA.</p> <p>Nursery, grammar and special school BoGs consist of parents, teachers and EA representatives along with DE governors. There is a growing number of controlled integrated schools.</p>
Voluntary Maintained	<p>Voluntary maintained schools are managed by BoGs nominated by trustees - mainly Roman Catholic - along with parents, teachers and EA representatives.</p> <p>The employing authority of teachers in these schools is the Council for Catholic Maintained Schools (CCMS).</p>
Voluntary Non-Maintained	<p>These are mainly voluntary grammar schools managed by a BoGs. The BoGs are constituted in accordance with each school's scheme of management - usually representatives of foundation governors, parents, teachers and in most cases, DE or EA representatives.</p> <p>The BoGs is the employing authority and is responsible for the employment of all staff in its school.</p>
Integrated	<p>These schools seek to add value to the education process by inviting Protestants and Catholics to come together with other traditions in order to improve their understanding of one another, their own cultures, religions and values.</p> <p>Each grant maintained integrated school is managed by a BoGs consisting of trustees or foundation governors along with parents, teacher and DE representatives.</p>

	The BoGs of an integrated school is the employing authority and is responsible for the employment of staff.
Irish-Medium	Irish-medium education is education provided in an Irish speaking school. DE has a duty to encourage and facilitate the development of Irish-medium education. Comhairle na Gaelscolaíochta (CnaG) was established by DE and its remit is to promote, facilitate and encourage Irish-medium education.
Special	A special school is a controlled or voluntary school which is specially organised to provide education for pupils with special needs and is recognised by the DE as a special school.
Independent	An independent school is a school at which full-time education is provided for pupils aged from four to 16 and is not grant aided. These schools set their own curriculum and admissions policies and are funded by fees paid by parents and income from investments. Each independent school must be registered with DE and is inspected regularly by ETI. There is one Independent School in Mid & East Antrim – Living Rivers Christian School, 2 – 4 Railway Street, Ballymena, BT42 2AB.

Source: <http://www.nidirect.gov.uk/types-of-school>

HEALTH

2.9 Health is more than just the absence of disease – it is a state of “*complete physical, mental and social wellbeing*”¹. Wellbeing has physical, cognitive, social and emotional dimensions, and is influenced by development across the life course. The World Health Organisation (WHO) defines mental health as a “*state of wellbeing in which the individual realises his or her own potential, can cope with the normal stresses of life, can work productively and fruitfully, and is able to make a contribution to his or her community*”.²

Programme for Government (PfG)

2.10 A number of the priorities outlined in the Programme for Government (PFG) 2011/2015 acknowledge the interrelationship between health, disadvantage, inequality, the social and physical environment, and longer term economic growth. There are 6 commitments within the PfG which fall to the Department of Health, Social Services and Public Safety (DHSSPS) to deliver:

Table 2.2: PfG Commitments to be delivered by DHSSPS

Commitment 22	Allocate an increasing percentage of the overall health budget to public health (DHSSPS) (This should contribute to society and the economy by tackling disadvantage)
Commitment 44	Enrol people who have a long-term (chronic) condition, and who want to be enrolled, in a dedicated chronic condition management programme (DHSSPS)
Commitment 45	Invest £7.2 million in programmes to tackle obesity (DHSSPS)
Commitment 61	Introduce a package of measures aimed at improving Safeguarding Outcomes for Children and Vulnerable Adults (DHSSPS)
Commitment 79	Improve patient and client outcomes and access to new treatments and services (DHSSPS)
Commitment 80	Reconfigure, reform and modernise the delivery of Health and Social Care services to improve the quality of patient care (DHSSPS)

1. Preamble to the Constitution of the World Health Organization as adopted by the International Health Conference, New York, 19-22 June, 1946; signed on 22 July 1946 by the representatives of 61 States (Official Records of the World Health Organization, no. 2, p. 100) and entered into force on 7 April 1948

2. Health Topics, definition of mental health, WHO, 2007 www.who.int/features/qa/62/en/

Transforming Your Care – December 2011 – Department for Health, Social Services and Public Safety

2.11 Transforming Your Care (TYC) was a review about change in health and social care in Northern Ireland over a five year period. The review was announced in June 2011 by the then Minister for Health, Social Services and Public Safety, Edwin Poots, MLA.



2.12 The Minister published “*Transforming Your Care: A Review of Health and Social Care in Northern Ireland*” on 13th December 2011. It made 99 proposals for change across the range of health and social care services. Subsequently Transforming Your Care: Action to Vision was launched for public consultation in October 2012.

2.13 It also identified 12 major principles for change which would underpin the future model of health and social care in Northern

Ireland:

- Placing the individual at the centre of the model by promoting a better outcome for the service user, carer, and their family
- Using outcomes and quality evidence to shape services
- Providing the right care in the right place at the right time
- Population-based planning of services
- A focus on prevention and tackling inequalities
- Integrated care – working together
- Promoting independence and personalisation of care
- Safeguarding the most vulnerable
- Ensuring sustainability of service provision
- Realising value for money
- Maximising the use of technology
- Incentivising innovation at a local level.

Making Life Better – A Whole System Strategic Framework for Public Health 2013 – 2023 – Department of Health, Social Services and Public Safety - June 2014



2.14 This is a ten year public health strategic framework which provides direction for policies and actions to improve the health and wellbeing of people in Northern Ireland. The framework builds on the *Investing for Health Strategy* (2002/12) and retains a focus on the broad range of social, economic and environmental factors which influence health and wellbeing. It brings together actions at government level and provides direction for implementation at regional and local level.

2.15 The vision of this framework is where “*all people are enabled and supported in achieving their full health and wellbeing potential. The aims are to achieve better health and wellbeing for everyone and reduce inequalities in health*”. This framework has been structured around 6 themes:

1. **Giving Every Child the Best Start** - has a strong emphasis on empowering and supporting parents and on education.
2. **Equipped Throughout Life** - has a focus on supporting individual’s transitions into and through working age and older age

3. **Empowering Healthy Living** - seeks to empower people of all ages to identify the risks to their health, choose healthy behaviours, and make informed decisions about their health. It also emphasises the need to embed prevention across all health and social care activity.
4. **Creating the Conditions** - recognises the need for joint working across government to address the wider structural, economic, environmental and **social conditions** impacting on health at population level.
5. **Empowering Communities** - promotes partnership working with local communities to build on assets in communities and to work in partnership with local government and other key agencies to address community issues.
6. **Developing Collaboration** – identifies both strategic and local actions to enhance collaboration.

Fitter Future for All – March 2012 – Department of Health, Social Services and Public Safety

2.16 Overweight and obesity remain key issues for the Department of Health, Social Services and Public Safety. To help reduce the harm related to overweight and obesity the Department, with a number of stakeholders, developed the *Framework for Preventing and Addressing Overweight and Obesity in Northern Ireland 2012-2022: A Fitter Future for All* which was launched in March 2012. This Framework aims to “empower the population of Northern Ireland to make healthy choices, reduce the risk of overweight and obesity related diseases and improve health and wellbeing, by creating an environment that supports and promotes a physically active lifestyle and a healthy diet”.

2.17 An update report of this Framework is now available. The Framework is also undergoing its first three-year review in 2015 and revised outcomes will also be published when complete.

COMMUNITY FACILITIES

2.18 Two of the overarching priorities within the Programme for Government refer to communities:

- **Protecting Our People, the Environment and Creating Safer Communities**

This priority focuses on making real improvements to people’s health and wellbeing, both physically and mentally, enhancing community safety, achieving improved safeguarding outcomes for children and adults most at risk of harm and protecting and improving the environment in which we live.

- **Building a Strong and Shared Community**

This priority focuses on building relationships between communities, encouraging active citizenship, reducing the incidences, and impacts, of domestic and sexual violence and abuse, elder abuse and harm directed to other vulnerable groups, wherever it occurs and whoever is responsible, and unlocking the potential of the culture, arts and leisure sectors as instruments for positive change. Additionally, it seeks to encourage greater involvement in sporting and pastoral activities to advance social cohesion and integration.

Regional Planning Policy Context

Regional Development Strategy 2035 (RDS)

2.19 The RDS is a spatial strategy and provides an overarching strategic planning framework to facilitate and guide the public and private sectors. The RDS highlights that *“sustainable communities are places where people want to live, work and play, now and in the future. They meet the diverse needs of existing and future residents, are sensitive to their environment, and contribute to a high quality of life. They are safe and inclusive, well-planned, built and run, and offer equality of opportunity and good services for all”*.



The aims within the RDS which relate to this paper are:

- **Support our towns, villages and rural communities to maximise their potential**

Our rural areas including our towns and villages have a key role in supporting economic growth. They offer opportunities in terms of their potential for growth in new sectors, the provision of rural recreation and tourism, their attractiveness as places to invest, live and work, and their role as a reservoir of natural resources and highly valued landscapes.

- **Promote development which improves the health and well-being of communities**

A healthy community is better able to take advantage of the economic, social and environmental opportunities which are open to it. Improved health and well-being is derived not only from easy access to appropriate services and facilities, although this is important, but also from the creation of a strong economy set within a safe and attractive environment. The provision of more social and affordable housing also helps to build strong balanced communities.

2.20 The RDS also contains two types of strategic guidance:

Regional Guidance (RG) – This applies to everywhere in the region and is presented under the 3 sustainable development themes of Economy, Society and Environment.

Spatial Framework Guidance (SFG) – This is additional to the region-wide guidance and is tailored to each of the 5 elements of the Spatial Framework.

RG6: Strengthen community cohesion

2.21 This regional guideline seeks to strengthen community cohesion through creating places in the built environment which are valued and used by people from different backgrounds (religion, political, racial, cultural etc). Specific actions include:

- **Develop integrated services and facilities.** This will enable people to meet and undertake shared activities whilst ensuring there are no barriers, perceived or physical, to access these places.
- **Foster a stronger community spirit and sense of place.** Encourage community participation in the planning process to reinforce a sense of belonging and place.

- **Encourage mixed housing development.** Neighbourhoods with homes in a range of sizes and tenures will allow heterogeneous populations to live together. Diverse populations lead to more stable communities and can help reduce social isolation.

Draft Strategic Planning Policy Statement (SPPS)

2.22 One of the core planning policies of the SPPS is the creation and enhancement of shared space. The Council will be required to use development planning, regeneration and development management powers to contribute to the creation of an environment that is: accessible to all communities; socially and religiously mixed; has a high standard of connectivity, and supports shared use of public realm.

2.23 More specifically, the draft SPPS states that Local Development Plans (LDPs) should allocate sufficient land to meet the anticipated needs of the community in terms of health, education and other public services.

2.24 The SPPS also states the policy objectives for town centres and retailing are to secure a town centres first approach for the location of future retailing and other main town centre uses, *including community facilities*.

Planning Policy Statements

2.25 [Planning Policy Statement 7](#) highlights that in terms of residential developments, a range of facilities will be required depending on the size of the development, and that major schemes on greenfield sites will require an appropriate level of facilities to serve the new community. Policy QD1 contains a specific criterion in relation to the provision of such facilities.

2.26 [Planning Policy Statement 21](#) states that planning permission will be granted for a necessary community facility to serve the local rural population.

2.27 Supplementary Planning Guidance is contained in [Development Control Advice Note 9 'Residential and Nursing Homes'](#) and [Development Control Advice Note 13 'Crèches, Day Nurseries and Pre-school Playgroups'](#).



SECTION 3

LOCAL PLANNING POLICY CONTEXT

BALLYMENA AREA PLAN 1986-2001

BMAP 2015

LARNE AREA PLAN 2010

SECTION 3 – LOCAL PLANNING POLICY CONTEXT – EXISTING AREA PLANS

Ballymena Area Plan 1986 - 2001



Education

3.1 The Ballymena Area Plan referred to the number of nursery and primary schools within the district and highlighted that the level of future primary school enrolments depended on a number of factors including birth rates and population movements. It stated that due to existing pressures and proposed residential development, a need for a new primary school is anticipated in

the West of Ballymena town and land for this was identified, which is now the site of Gracehill Primary School.



Educational Use

Health, Social and Community Facilities

3.2 The Ballymena Area Plan highlighted that the Waveney Hospital was the only general hospital in the district, and that contained within its complex was the Braid Valley Hospital for which catered for geriatric patients. Maternity needs were catered for at the Cottage Hospital. The area plan stated that the existing health facilities were considered to be adequate for the foreseeable future and had no proposals for future developments in the district.

3.3 In terms of library provision, the area plan referred to the provision of a new central library in Ballymena, and new branch libraries were planned for Cullybackey, Kells/Conor and Portglenone.

3.4 The area plan stated that Ballymena Borough Council had responsibility for a number of community centres throughout the district, and that a number of new community centres were planned.

Belfast Metropolitan Area Plan 2015 (BMAP)

3.5 BMAP highlights that the Department of Education (DE) and the Department for Employment and Learning (DEL) retain overall responsibility for education, policy and finance, and that responsibility for the provision of primary and post-primary educational facilities along with library services in the plan area, rests mainly with the following providers:

- Belfast Education and Library Board (BELB);
- Comhairle na Gaelscolaíochta (Council for Irish Medium Education);
- Council for Catholic Maintained Schools (CCMS);
- North Eastern Education and Library Board (NEELB);
- Northern Ireland Council for Integrated Education (NICIE); and
- South Eastern Education and Library Board (SEELB).



3.6 BMAP also states that third level education is provided for by the Colleges of Further and Higher Education, Queen's University and the University of Ulster.

BMAP contains one policy relating to community facilities:

Policy CF1 Protection of land for Education, Health, Community and Cultural Facilities

Planning Permission will not be granted for alternative uses on lands identified for the provision of education, health, community uses or

3.7 It also states that exceptionally, where lands identified for community uses become surplus to requirements, alternative uses may be acceptable on such sites.

3.8 No zonings for education, health, community or cultural facilities exist within the Carrickfergus district.

Larne Area Plan 2010



3.9 The Larne Area Plan does not contain any specific policies which relate to education, health or community facilities. However within Larne town there is a site along Ballyhampton Road which is zoned for school use. To date no planning application for school use has been submitted on this site.

This zoning is referred to within housing zoning HO4:

HO4 - Ballyloran Road – A site of 10.2 hectares has been zoned for residential use

The site forms part of a large field, the remainder of which will be zoned for school use.



School Site







SECTION 4

PROFILE OF MID & EAST ANTRIM DISTRICT

EDUCATION

HEALTH

COMMUNITY FACILITIES

SECTION 4 – PROFILE OF MID & EAST ANTRIM

Nursery and School Provision within Mid & East Antrim

4.1 Figure 4.1 illustrates the distribution of education provision within the Mid & East Antrim Borough.

Ballymena Education Summary

Nursery Provision

4.2 There are 27 nursery school/units located within the former Ballymena district, and several these are located within or associated with a primary school. Just under 50% of the nursery schools/units are located within Ballymena town, and the majority of the remainder are located in villages with a small number located in a rural location. The most up to date figures from the Education Authority illustrate that in 2012/13 the three types of nursery school were all filled to capacity and had no spare spaces available.

Primary Education



4.3 There are 27 primary schools within Ballymena district, 10 of these are located within the town, 8 are located in a village and 9 are situated in the rural area. The 2012/13 figures illustrate that there is spare capacity of 922 spaces (19%) for controlled primary schools, 96

spaces (7%) for maintained primary schools and 4 spaces (1%) for grant maintained integrated primary schools. Overall this equates to the spare capacity of 1022 spaces (16%) of primary school places.

Post Primary Education

4.4 There are 7 post primary schools within the former Ballymena district. All of these with the exception of Cullybackey College are located within Ballymena town. Overall for the 2012/13 period, there was a spare capacity of 156 post primary school places. The majority of these places (247) were attributed to St Patricks College a Maintained Secondary School, followed by 104 places at the Controlled Grammar School, Cambridge House. The remaining post primary schools within Ballymena were oversubscribed, and therefore these had a deficit of space capacity. The largest deficit was at the Grant Maintained Integrated School; Slemish College.

Special Education

4.5 Within the former Ballymena district there is one special school – Castle Tower School which was established in 2007, following the amalgamation of three special schools in Ballymena. However until new accommodation is built the school operates on 3 campuses. The school caters for children from pre-school through to post primary education. In 2012/13 there was a spare capacity of 50 places at Castle Tower School.

Further Education

4.6 Within Ballymena town there are three campuses of the Northern Regional College at Farm Lodge, Trostan Avenue & Café Lamont, and these offer a wide variety of full and part time courses. Statistics from NISRA illustrate that enrolments on further education regulated courses in Ballymena have fluctuated between 3991 in 2003/04 to 3371 in 2013/14.

Figure 4.1 Educational Institutions in Mid & East Antrim

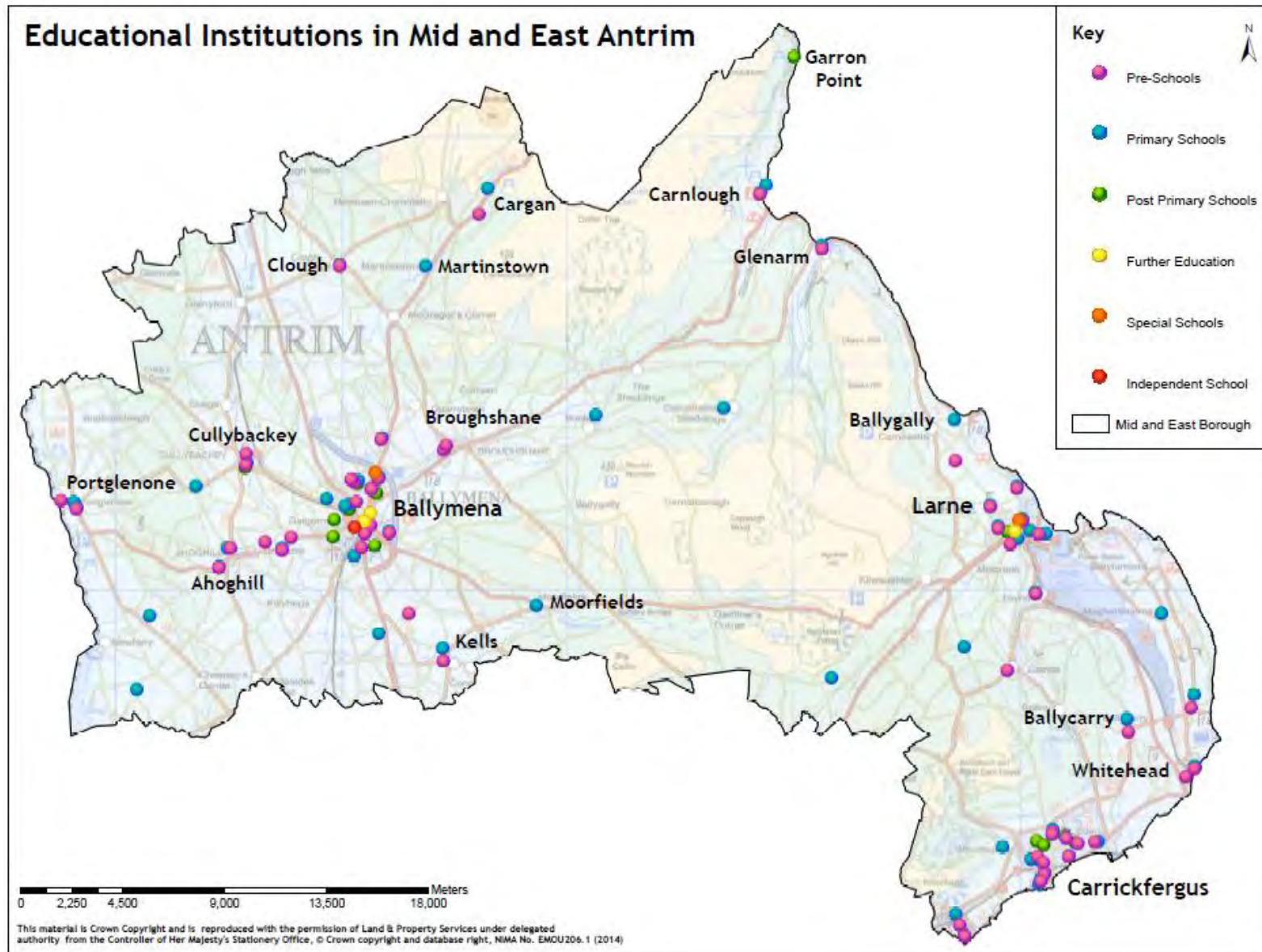
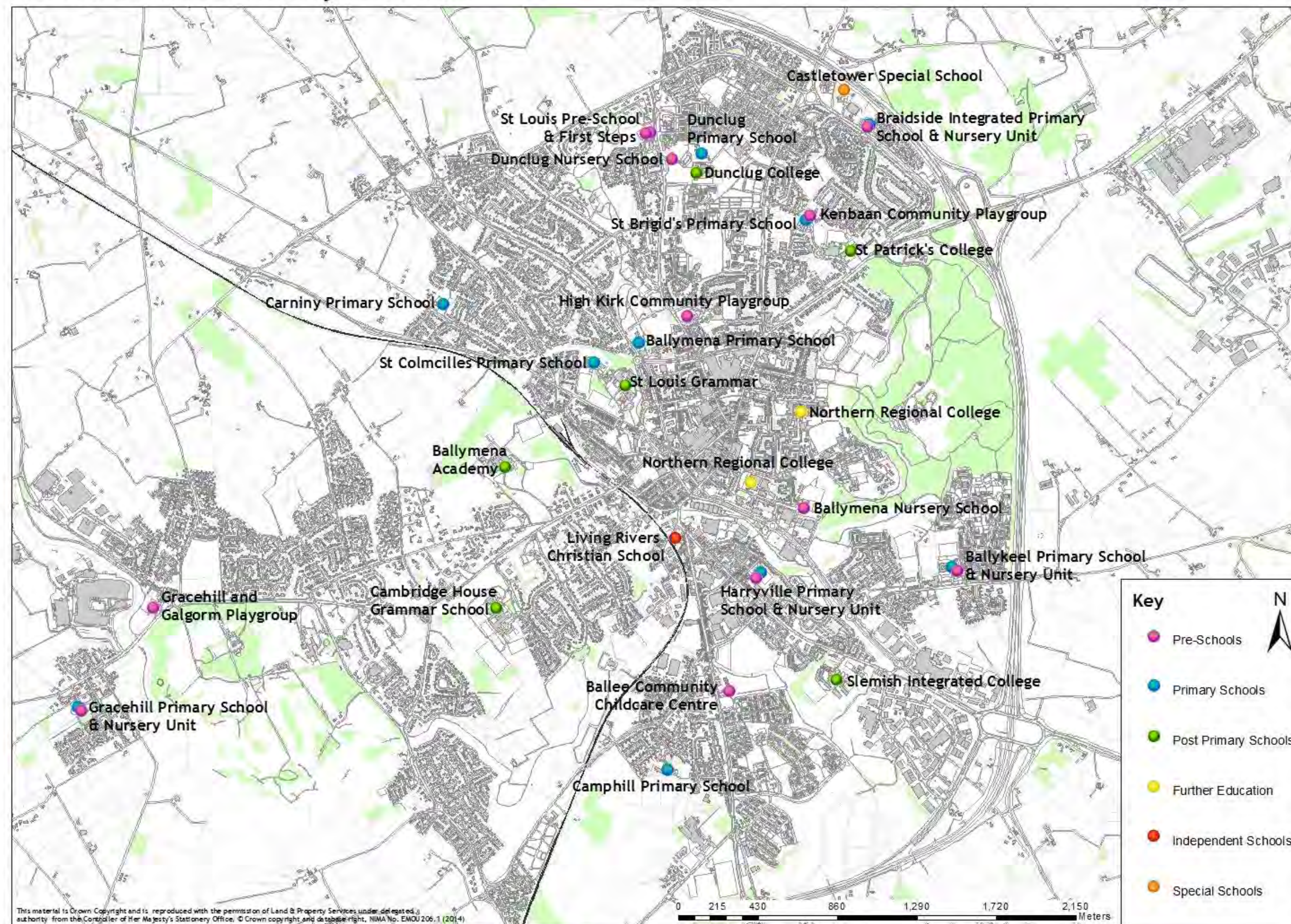


Figure 4.2 Educational Institutions in Ballymena Town

Educational Assets in Ballymena Town



Carrickfergus Education Summary

Nursery Provision

4.7 There are 14 nursery schools/units within the former Carrickfergus district, with more than half of these being located within or associated with a primary school. The 2012/13 Education Authority figures illustrate that there was no spare capacity available within these nursery schools/units.

Primary Education

4.8 There are 13 primary schools in the former Carrickfergus district, with 10 of these located throughout the town, and 2 in Greenisland and 1 in Whitehead. The 2012/13 figures show that was a spare capacity of 827 spaces, the majority of these were within Controlled Primary Schools.

Post Primary Education

4.9 There are four post primary schools within the former Carrickfergus district, and these are all located within the town. In 2012/13 there was spare capacity of 214 post primary places. All of these spare places were located within Controlled Secondary Schools which include Carrickfergus College and Downshire School. There was a deficit of spare capacity within both Grant Maintained Integrated Post Primary School (Ulidia Integrated College) and also Controlled Grammar School (Carrickfergus Grammar).



Special Education

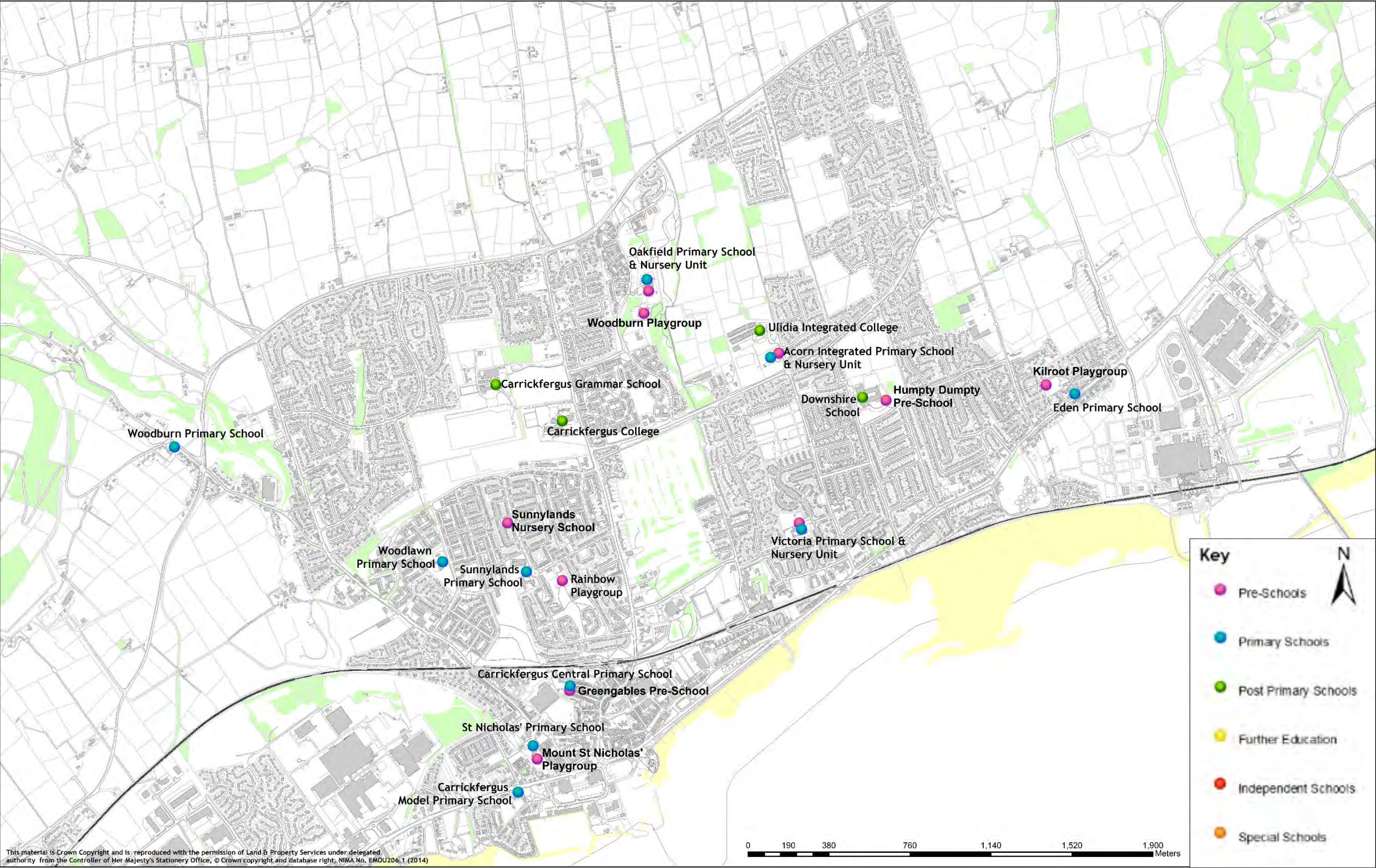
4.10 There are no special schools within the Carrickfergus district.

Further Education

4.11 The Northern Regional College (NRC) does not have a campus within the Carrickfergus district, however the NRC provides a wide range of courses for adults in the community, and they work with many community and voluntary organisations to deliver courses in informal community venues near to students homes. Statistics from NISRA illustrate that enrolments on further education regulated courses in Carrickfergus have fluctuated between 1753 in 2003/04 to 2151 in 2013/14.

Figure 4.3 Educational Institutions in Carrickfergus Town

Educational Assets in Carrickfergus Town



Larne Education Summary

Nursery Provision

4.12 There are 13 nursery schools/units within the former Larne district, and half of these are located within or associated with a primary school. The 2012/13 Education Authority figures shows that there were 25 spare places in Maintained Nursery Units.

Primary Education



4.13 There are 18 primary schools within the former Larne district, with 7 of these located within the town, 8 within a village or small settlement and 3 are located in the rural area. In 2012/13 there was spare capacity of 953

places, the majority of these (622) were located within Maintained Primary Schools.

Post Primary Education

4.14 There are three post primary schools within the former Larne district, two of which are located within Larne town and the third is located in the rural area outside Carnlough. In 2012/13 there were 283 spare places, the majority (264) of which were attributed to the Controlled Secondary School; Larne High School.

Special Education

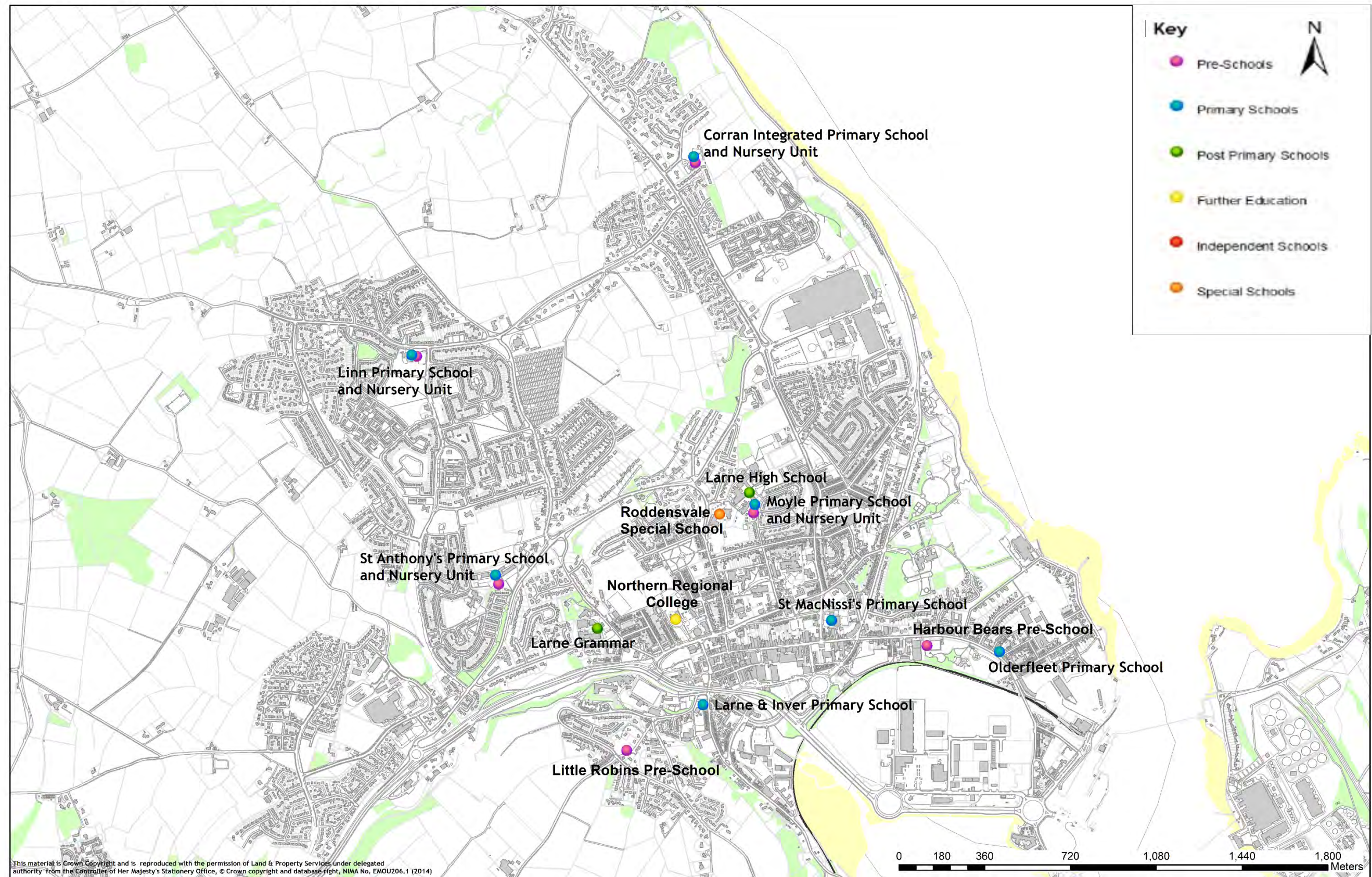
4.15 Within the former Larne district there is one special school, Roddensvale. This school provides pre-school education through to post primary education, and also includes a school leaver's programme for pupils aged 16 – 19. This school also incorporates a multisensory class and a therapy department. In 2012/13 there was a deficit of spare places at Roddensvale School.

Further Education

4.16 The Northern Regional College has one campus in Larne, which is shared with an organisation offering sheltered employment. Statistics from NISRA illustrate that enrolments on further education regulated courses in Larne have fluctuated between 1643 in 2003/04 to 1825 in 2013/14.

Figure 4.4 Educational Institutions in Larne Town

Educational Assets in Larne Town



Future Proposals

Major Capital School Builds in Mid & East Antrim Borough

4.17 Whilst funding was announced in 2012 by the Education Minister, the Education Authority- North Eastern Region are currently at tender stage to appoint a contractor to build a new **Castle Tower School** on a new site at **Trostan Avenue, Ballymena**. The site is already in Education Authority ownership but it will be a new site for this school. Planning approval has been granted for the scheme.

4.18 Funding for the following major capital school builds in the Borough were announced in 2013 and are all still at initial planning stage:

- **St. Mary's Primary School, Cargan/Glenravel Primary School, Martinstown;**
- **Braidside Integrated Primary School, Ballymena;**
- **Corran Integrated Primary School, Larne;**

4.19 In addition, in 2014 the following major school builds were announced:

- **Woodburn PS, Carrickfergus:** The Education Authority- North Eastern Region is currently out to tender to appoint an Integrated Design Team to take forward a new school build. The preferred option determined by economic appraisal is for a new build on the existing site.
- **Cullybackey College:** The Education Authority- North Eastern Region are currently working on an Economic Appraisal exploring options for a new school build. The appraisal is still at a formative stage but, in keeping with the standard approach, all available new site options as well as existing site development of the school is being explored.
- **Dunclug College, Ballymena:** The Education Authority- North Eastern Region are currently working on an Economic Appraisal exploring options for a new school build. The appraisal is still at a formative stage but, in keeping with the standard approach, all available new site options as well as existing site development of the school is being explored.
- **St. Killian's College, Carnlough-** still at initial planning stage.

Potential expansions/enhancements to existing schools

4.20 The Education Minister, John O'Dowd announced on 18th March 2014 that 51 school enhancement projects throughout NI had received approval to commence.

4.21 The School Enhancement Programme which was established in January 2013 is designed to enable the refurbishment or extension of school buildings. In October 2013 the Department of Education announced which schools had been successful in the initial application process. However, each project was then subject to an Economic Appraisal before final approval could be given.

4.22 Of the 51 projects given approval, 4 are within Mid & East Antrim:

- **Acorn Integrated Primary School, Carrickfergus-** Current position as of 27 July 2015 – On site.
- **St. Louis Grammar School, Ballymena-** Current position as of 27 July 2015 – Design complete but scheme parked pending capital funds.
- **Slemish College, Ballymena-** Current position as of 27 July 2015- In design and planning.
- **St Killian's College, Ballymena**

Sources: Anne Conaty, Dept of Education & Michael Watterson, Education Authority- North Eastern Region

Further Education

4.23 The Northern Regional College (NRC) have advised that they have submitted an Outline Business Case to the Department for Employment and Learning which examines options for the future provision of the College estate. Within this Case options are being examined to improve the condition and quality of the NRC estate in Ballymena in order to provide fit for purpose, modern, flexible and adaptable accommodation for teaching and learning, which will enhance the image and reputation of the College.

HEALTH

4.24 It is currently the overall responsibility of the Health and Social Care Board, (HSCB) to assess the health and social care needs of the population and to secure the care to meet those needs in keeping with available resources. Provision of community health and social care services to meet those needs is the responsibility of the Northern Health and Social Care Trust. The Department of Health, Social Services and Public Safety retains overall responsibility for policy and funding of major capital works.

4.25 In terms of health facilities, there are numerous GP practices, nursing & residential homes and dental surgeries throughout Mid & East Antrim, and these are illustrated on Figures 4.5 & 4.6 below, and also listed in Appendices 1.3 and 1.4.

Table 4.2: Number of GP Practices and Dental Surgeries within Mid & East Antrim

District	GP Practices	Dental Surgeries
Ballymena	17	15
Carrickfergus	4	7
Larne	7	5
TOTAL	28	27

Source: Hugh Nelson, Northern Health and Social Care Trust, June 2015

Hospitals

In addition to the above facilities there are two hospitals within Mid & East Antrim:

Braid Valley Hospital, Ballymena

4.26 This hospital provides a range of community hospital services including x-ray, physiotherapy, podiatry and a range of outpatient services. Ballymena Health Centre and Slemish Community Services Centre are also located on the site. A new health and care centre is currently under construction at this site – see current projects below.

Moyle Hospital, Larne

4.27 This hospital offers a range of community hospital and outpatient services. The hospital also incorporates Inver Intermediate Care Unit which operates up to 18 beds for patients who require inpatient rehabilitation, a period of care and rehabilitation following fracture surgery or for further assessment following an acute hospital admission.



4.28 Neither of these hospitals have an Accident and Emergency Department, and therefore to access such facilities it is necessary to travel outside Mid & East Antrim. The nearest hospitals to Mid & East Antrim with A&E Departments are:

- Antrim Hospital, Antrim;
- Causeway Hospital, Coleraine;
- Royal Victoria Hospital, Belfast
- Mater Hospital, Belfast



Nursing Homes

4.29 Transforming Your Care highlights that the proportion of older people in Northern Ireland living in a nursing home is 3.5 times higher than England and Wales and is increasing. Between 2007/08 and 2009/10 the number of nursing home places increased from 6,392 to 6,694, which reflects the growing complexity of needs and high dependency levels among some of the older population. Meanwhile the number of residential care places is slowly declining, reflecting growth in supported housing schemes provided by Housing Associations which are gradually replacing residential homes. Over the same period 2007/08 to 2009/10, the number of residential places fell from 3,096 to 2,983. Many of those using residential care are no longer permanent residents. The policy aim for some time has been to shift care from institutional settings to home and community settings.

4.30 On the Regulation and Quality Improvement Authority (RQIA) register of nursing homes, there are 20 within Mid & East Antrim, including 9 within Ballymena district, 8 within Carrickfergus district and 3 within Larne district.

Table 4.3: RQIA registered Nursing Homes within Mid & East Antrim

Ballymena	Carrickfergus	Larne
Galgorm	Castlevew	Larne Care Centre
Prospect	Tamlaght	Broadways Private Nursing Home
Craigdun	Carrickfergus Manor	Gillaroo Lodge
Camphill	Cherry Tree House	
Braefield	Knockagh Rise	
Rylands	Ravenhill	
Rose Martha Court	Whitehead Nursing Home	
Kintullagh Care Home	Chester	
Slemish House		

Source: Hugh Nelson, Northern Health and Social Care Trust, June 2015

4.31 In addition to these nursing homes, there are also 17 residential homes within Mid & East Antrim including 7 within Ballymena district, 4 within Carrickfergus district and 6 within Larne district:

Table 4.4: RQIA registered Residential Homes within Mid & East Antrim

Ballymena	Carrickfergus	Larne
Croft Lodge	Joymount House	Clanrye
Carmoyne	SENSE	Lisgarel
Carn-vaddy	Ellis Court Respite Unit	Colebrook
Innisfree	Karuna Home	Englewood
Andena		Rowandale
Redford		Karingmore
Pinewood		

Source: Hugh Nelson, Northern Health and Social Care Trust, June 2015

The locations of these nursing homes and residential homes are illustrated on the map in Figure 4.6.

Figure 4.5 Medical Assets in Mid & East Antrim

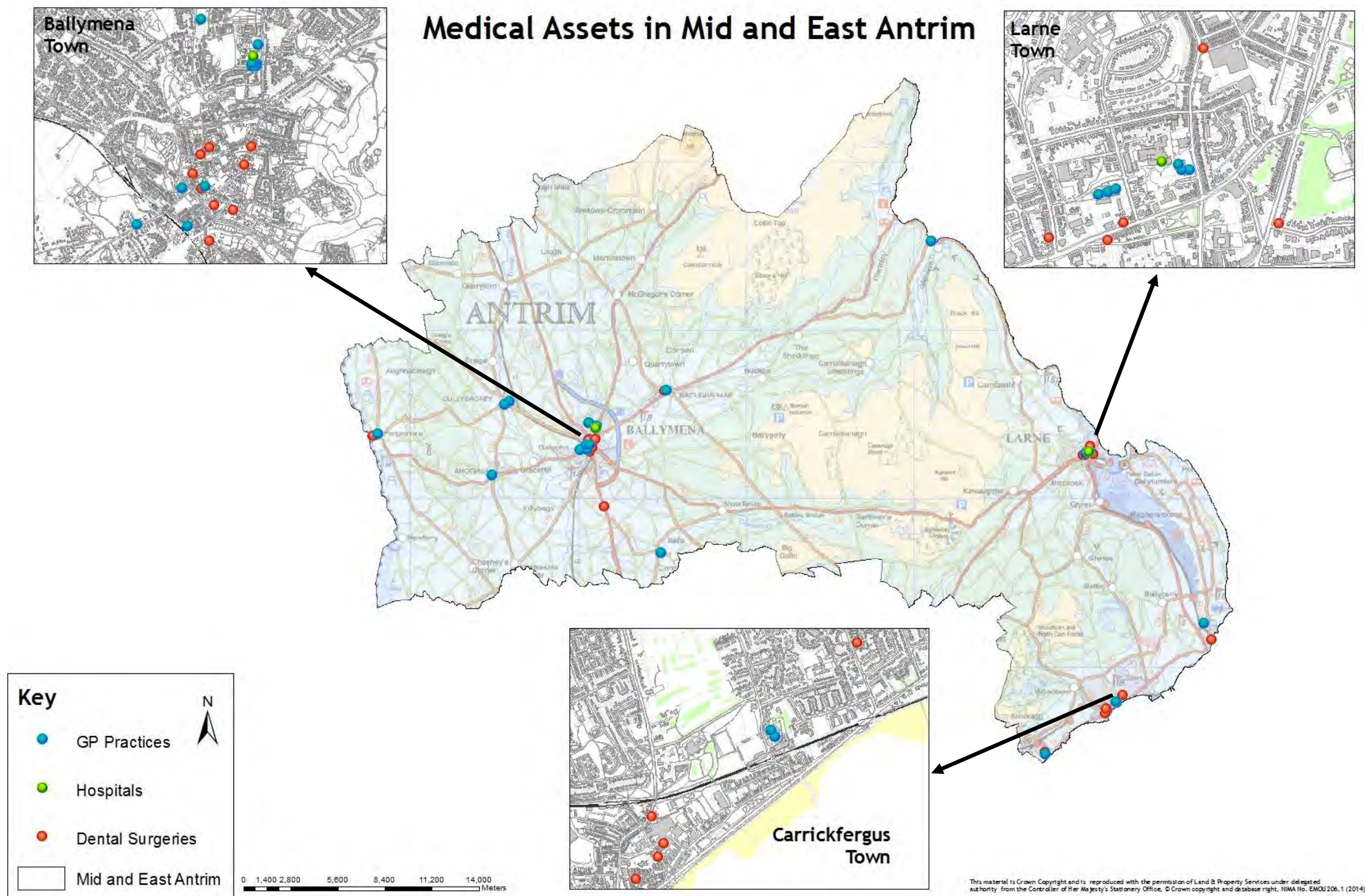
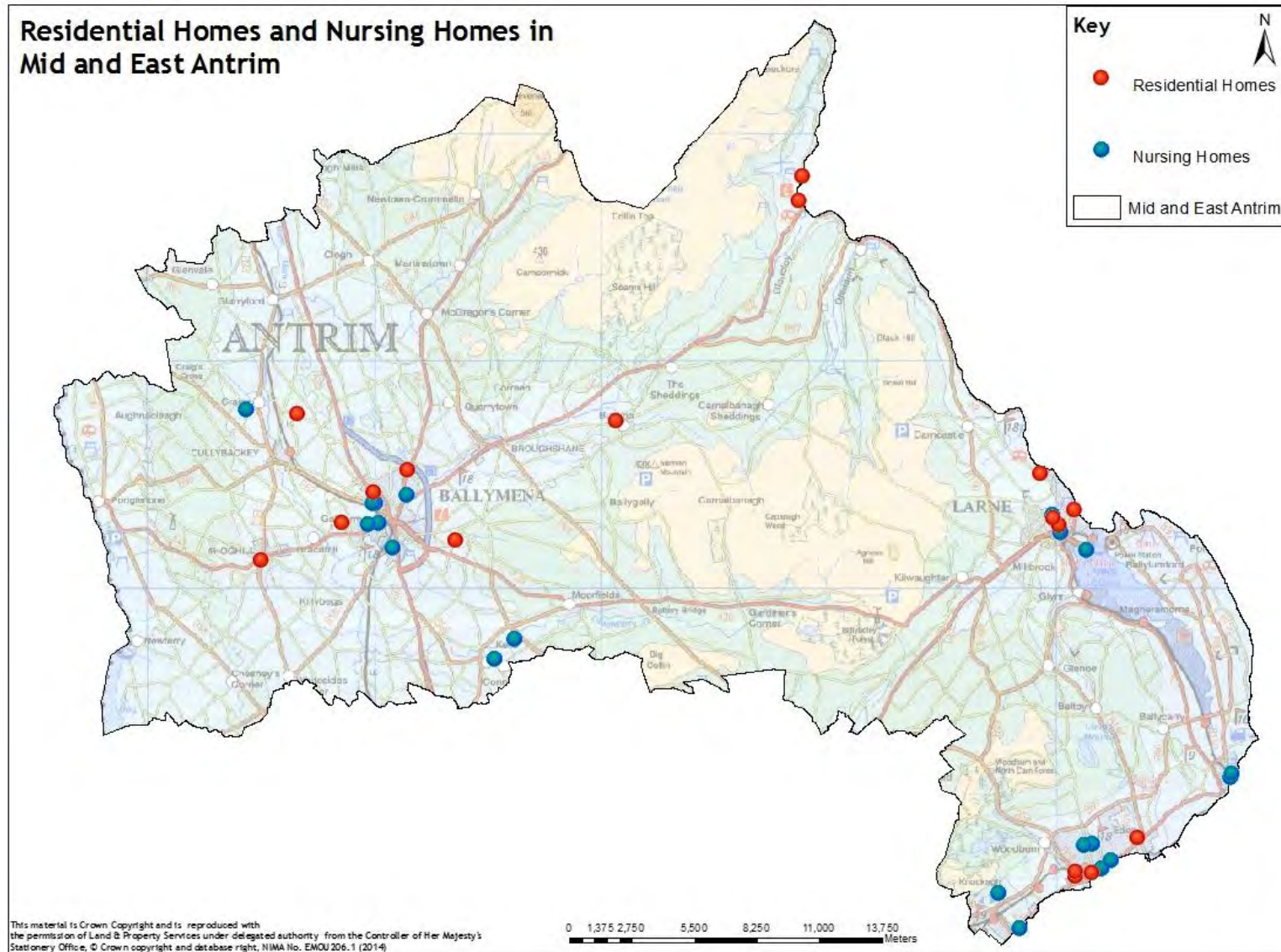


Figure 4.6 Residential and Nursing Homes in Mid & East Antrim



Children's Services

4.32 Transforming Your Care highlights that in 2010 there were 2,606 Looked After Children in Northern Ireland, up by 6% from 2009. The greatest proportion (65%) was in foster care and approximately 11% were in residential care. In regards to residential care, a number of issues have been identified:

- There is an increasing complexity of needs being presented by young people in relation to mental health, drug and alcohol abuse, sexually harmful/vulnerable behaviours and criminality;
- It is difficult to provide flexible residential accommodation to meet the needs of a small number of young people; and
- Young people aged 16+ are being excluded from their homes/community as a result of difficult behaviours.

There are two Northern Health and Social Care Trust Children's homes within Mid & East Antrim:

Source: <http://www.northerntrust.hscni.net/contact/414.htm>

4.33 **The Willows, Ballymena** – opened 9th January 2014. Provides high quality, focused residential support for young people aged between 12 and 18 with a complexity of needs for a maximum of 12 weeks and to work intensively with families for the duration of the placement.

4.34 **Barn Court, Carrickfergus** – This children's home provides physical, social, spiritual and educational support for children in care. It also provides aftercare support packages for children moving placement for re-integration with family or with foster carers.

Current Projects

4.35 There are two major projects which are currently under construction within Ballymena district.

4.36 One of these is the new health and care centre at the Braid Valley Hospital which is due to open in Autumn 2015. This new facility will replace outdated accommodation and improve the provision and delivery of health care and social services to people in the Ballymena and surrounding area. It is anticipated this new facility will allow staff to manage patient's conditions more effectively in the community through the co-operation and integration of the GP practices and multi-disciplinary teams.



4.37 The new health and care centre will bring together a range of services in a modern, accessible, one stop facility and is to include:

- Up to 7 GP practices;
- Community dentistry;
- Podiatry;
- Speech and language services;
- Physiotherapy services;
- Community addictions unit;
- Out of hours service

4.38 The second project under construction is a new Northern Ireland Ambulance Service Station, at Ballee Playing Fields, Ballymena. The new station will replace the current station at the Braid Valley Hospital site, and will incorporate the ambulance Divisional Headquarters from Coleraine. This facility will provide enhanced services and enable the ambulance service to respond effectively to current and increasing demands in services. The new ambulance station is due to open in December 2015.

Future Proposals

4.39 The following proposals have been identified by the Northern Health and Social Care Trust as intended developments within Mid & East Antrim, however it should be noted that these are subject to approval on capital allocation by the Department of Health, Social Services and Public Safety which determines capital allocation regionally.

- Replacement of Larne and Ballymena Adult Centres (to commence in 16/17 and be complete by 18/19)
- Refurbishment of Ballee Children's Home (dates to be determined) – re-use of vacant building in Ballymena.
- Replacement of Slemish House, Children's Centre (dates to be determined) Provision of fit for purpose accommodation Linked to re-use of Braid Valley site
- Replacement roof and refurbishment of Pennybridge stores (dates to be determined)

COMMUNITY FACILITIES

Libraries

4.40 The Northern Ireland Library Authority (Libraries NI) has the statutory responsibility for the provision for public library services in Northern Ireland. Within Mid & East Antrim there are 9 public libraries, as listed below. In addition, there is a mobile library service which travels throughout several towns and villages within the district.

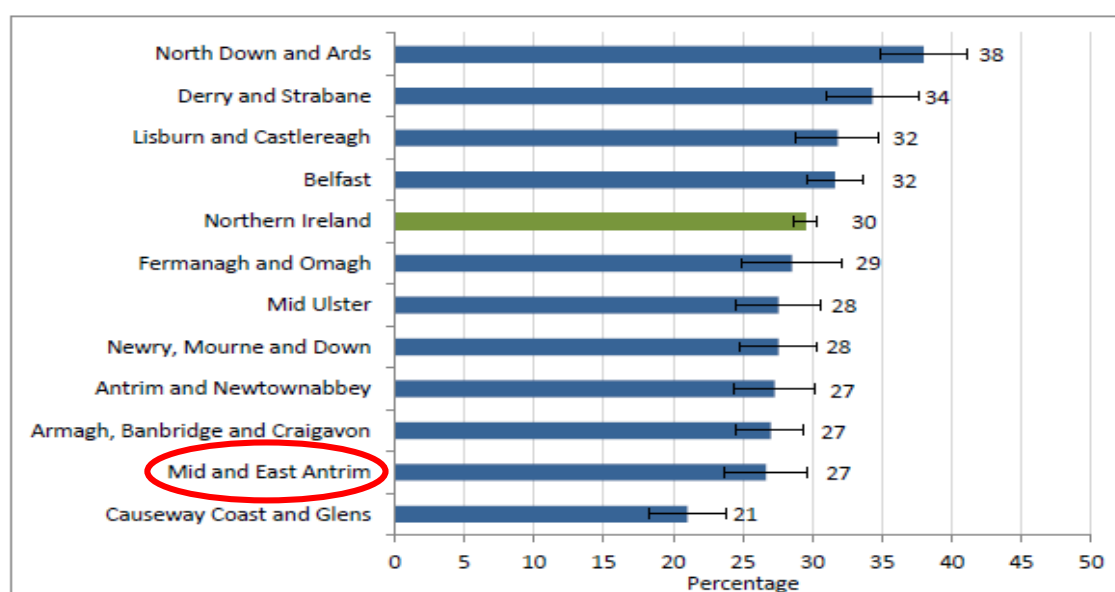
- Ballymena Central Library
- Broughshane Library
- Carnlough Library
- Carrickfergus Library
- Greenisland Library
- Kells & Conor Library
- Larne Library
- Portglenone Library
- Whitehead Library



4.41 As a result of 7.5% savings required by the Draft Budget for 2015/16 the Board of Libraries NI approved a proposed policy for library opening hours in May 2015. This policy will involve a reduction in opening hours or a different operational pattern for a number of libraries, however it will prevent any library closures. Any proposed changes within this policy will not take effect prior to October 2015. A list of the existing and proposed opening hours can be found in Appendix 1.6, and this illustrates that Carrickfergus, Larne and Greenisland libraries will be affected by reduced opening hours.

4.45 DCAL have prepared a report based on the Continuous Household Surveys from 2011/12 – 2013/14 based on Northern Ireland's eleven new councils. This survey includes information relating to the use of public library services, and this illustrates that Mid & East Antrim had the second lowest proportion of adults who had engaged with the public library service within the previous year.

Figure 4.7: Adult Use of Libraries within the 11 Northern Ireland Council Areas



The black error bar at the end of each horizontal column represents the range within which we can be 95% certain that the true population proportion lies (i.e. 95% confidence interval).

Source: *Engagement in culture, arts and leisure by adults in Northern Ireland's new council areas – Findings from combined Continuous Household Surveys 2011/12 – 2013/14 – published May 2015.*

Community Centres

4.46 There are 27 community centres located throughout Mid & East Antrim, and these are listed in Appendix 1.8. These community centres are generally located within towns and villages, with the majority of these within easy walking distance so they are easily accessible.



4.47 Activities in a community centre can vary from music/dance activities, sport activities, coffee mornings, social support activities to child care. They aim to bring together people from within the local community from a diverse range of backgrounds.

Youth Services

4.48 The Education Authority is responsible to the Department of Education for the local administration, management and delivery of a wide variety of Youth Services to young people in a variety of settings.

4.49 The Youth Service is made up of a voluntary sector and a statutory sector.

- statutory sector is under the control of the Education Authority (EA) and consists of a number of youth centres/clubs and outdoor education centres
- voluntary sector is by far the larger sector and is composed of a diverse range of organisations both uniformed and non-uniformed operating at local and regional level

Benefits of the Youth Service

4.50 Throughout Northern Ireland there are approximately 148,000 young people who use the Youth Service and who benefit greatly from the various programmes. Not only are friendships cemented and forged but there are real opportunities to develop socially, morally, physically and intellectually through participation in challenging, dynamic and stimulating programmes.

4.51 Just as the programmes vary, so do the locations where young people meet. Young people can be engaged on the streets, in community centres, youth centres, schools, church halls, on boats, mountains or even underground.

Youth Services 3 Year Area Plan

4.52 A Youth Services 3 Year Area Plan was published in April 2013 by the Northern Ireland Education & Library Board (now the Education Authority) for all of the legacy Councils within Northern Ireland which covers the period 2013 – 2016.

4.53 The Youth Service is responsive to young people's needs with key emphasis being placed on their personal and social development. The team who prepared the aforementioned report completed District Council needs assessments and used several indicators to highlight relevant areas of need which will affect the targeting of resources and key areas of action within the Area Plans.

4.54 These full reports can be found online at: <http://www.neelb.org.uk/parents-and-youth/youth/youth-service-strategy/>. Based on the data collected together with information from youth workers and consultations with stakeholders, the Youth Service identified both priority themes and geographical areas in each of the District Council areas, and these are illustrated below for the three legacy Councils within Mid & East Antrim:

Youth Service 3 Year Area Plan – Priority Themes and Geographical Areas for legacy Council Areas of Ballymena, Larne and Carrickfergus

Table 4.5: Youth Service Geographical Priority Areas within Mid & East Antrim

Ballymena	Carrickfergus	Larne
Ahoghill	Blackhead	Antiville
Ballee	Gortalee	Ballycarry
Ballykeel	Greenisland	Ballyloran
Cullybackey	Killycrot	Blackcave
Dunclug Area	Love Lane	Carnlough
Dunfane	Milebush	Central
Galgorm	Northland	Craigyhill
Harryville	Sunnylands	Glenarm
Kells		Tullygarley
Portglenone		
Tullygarley		

Table 4.6: Youth Service Priority Themes within Mid & East Antrim

Ballymena	Carrickfergus	Larne
Health	Developing Participation	Developing Participation
Youth Suicide and Mental Health	Targeting Deprivation	Targeting Deprivation
Youth Unemployment	Personal and Social Development	Personal and Social Development
Drug and Substance Abuse	Improving Health and Wellbeing	Improving Health and Wellbeing
Access to Youth Provision/Rural Isolation	Promoting CRED/Inclusion	Promoting CRED/Inclusion
Low Educational Attainment	Employment	Employment
Sectarianism		Raising Educational Attainment
Lack of Social Mobility		
Communities of interest specifically - Ethnic minorities		

SECTION 5 CONCLUSIONS

5.1 This paper has presented an overview of the key relevant government strategies, regional planning policy and area plan context. It has also provided an overview as to the education, health and community facilities across Mid & East Antrim Borough Council area, including details of current and future projects, which in summary are:

Education



- 54 pre-school education institutions;
- 58 primary schools;
- 14 post primary schools;
- 2 special schools (both offer pre-school education);
- 1 independent school;
- Major school builds planned for:
 - Castle Tower School, Ballymena
 - St. Mary's Primary School, Cargan/Glenravel Primary School, Martinstown;
 - Braidside Integrated Primary School, Ballymena
 - Corran Integrated Primary School, Larne
 - Woodburn PS, Carrickfergus
 - Cullybackey College
 - Dunclug College, Ballymena
 - St. Killian's College, Carnlough
- Potential expansions/enhancements planned for:
 - Acorn Integrated Primary School, Carrickfergus
 - St. Louis Grammar School, Ballymena
 - Slemish College, Ballymena
 - St Killian's College, Carnlough

Health



- 28 GP practices
- 27 dental surgeries
- 2 Hospitals
- 20 nursing homes
- 17 residential homes
- 2 children's residential homes
- Projects under construction at:
 - New health and care centre – Braid Valley Hospital
 - New ambulance station – Ballee Playing Fields
- Intended developments at:
 - Replacement of Larne and Ballymena Adult Centres;
 - Refurbishment of Ballee Children's Home;
 - Replacement of Slemish House, Children's Centre;
 - Replacement roof and refurbishment of Pennybridge stores

Community Facilities



- 9 public libraries
- 27 community centres

5.2 Development plans can zone or protect land for community facilities such as schools and health centres where there is a firm proposal on behalf of a service provider. Where such needs are required they should be identified through the Community Plan. It is important that significant proposals for new provision or expansion of existing facilities are made known by the relevant service providers as this can influence decision making on other elements of the LDP, for example, in regard to the distribution of housing growth both strategically, or within a particular settlement. Such decisions can also be influenced by knowledge of ongoing deficits in provision of community facilities in particular areas.

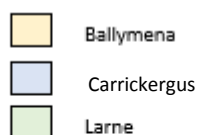
APPENDICES

APPENDICES 1.1 – 1.7

© 2010 KPMG LLP

Appendix 1.1: Education Institutions within Mid & East Antrim

Source: www.eani.org.uk/ea-regional-offices/north-eastern-region/



Pre School Education facilities shown in **Bold** are associated with/located in a primary school

Please note that this list solely refers to pre-school education facilities, and does not include childcare/day care facilities as these are not educational.

Pre School Education

Town	Ballymena	Ballymena Nursery School	Controlled Nursery School	
Town	Ballymena	Dunclug Nursery School	Controlled Nursery School	
Town	Ballymena	Ballykeel Nursery Unit	Controlled Nursery Unit	Ballykeel Primary School and Nursery Unit
Village	Broughshane	Broughshane Nursery Unit	Controlled Nursery Unit	Broughshane Primary and Nursery Unit
Village	Cullybackey	Buick Memorial Nursery Unit	Controlled Nursery Unit	Buick Memorial Primary School and Nursery Unit
Village	Clough	Clough Nursery Unit	Controlled Nursery Unit	Clough Primary and Nursery Unit
Town	Ballymena	Gracehill Nursery Unit	Controlled Nursery Unit	Gracehill Primary School
Town	Ballymena	Harryville Nursery Unit	Controlled Nursery Unit	Harryville Primary School and Nursery Unit
Town	Ballymena	Braidside Integrated Nursery Unit	Grant Maintained Nursery School Unit	Braidside Integrated Primary & Nursery School
Village	Portglenone	St Mary's Nursery Unit (Portglenone)	Maintained Nursery Unit	St Mary's Primary and Nursery Unit
Village	Ahoghill	Ahoghill & District Community Pre-School Playgroup	Voluntary/Private Nursery/Playgroup	
Town	Ballymena	Ballee Pre-School Playgroup	Voluntary/Private Nursery/Playgroup	
Village	Broughshane	Broughshane Community Centre of Early Learning	Voluntary/Private Nursery/Playgroup	
Town	Ballymena	First Steps Pre-School	Voluntary/Private Nursery/Playgroup	
Village	Cargan	Glenravel Community Playgroup	Voluntary/Private Nursery/Playgroup	
Town	Ballymena	Gracehill and Galgorm Community Playgroup	Voluntary/Private Nursery/Playgroup	
Village	Cullybackey	Happitots Pre-school Centre	Voluntary/Private Nursery/Playgroup	
Town	Ballymena	High Kirk Community Playgroup	Voluntary/Private Nursery/Playgroup	
Village	Kells/Conor	Kells & Connor Pre-School	Voluntary/Private Nursery/Playgroup	
Town	Ballymena	Kenbaan Community Playgroup	Voluntary/Private Nursery/Playgroup	St Brigid's Primary School
Countryside		Kirkinriola Early Years	Voluntary/Private Nursery/Playgroup	Kirkinriola Primary School
Countryside		Ladybirds Playgroup and Day Nursery	Voluntary/Private Nursery/Playgroup	
Village	Portglenone	Portglenone Community Playgroup	Voluntary/Private Nursery/Playgroup	

Town	Ballymena	St Louis' Pre-School	Voluntary/Private Nursery/Playgroup	
Countryside		Stepping Stones Playgroup	Voluntary/Private Nursery/Playgroup	St Paul's Primary School
Countryside		The Country Pre-School	Voluntary/Private Nursery/Playgroup	
Small Settlement	Grange Corner	Taylorstown CC Playgroup		
Town	Carrickfergus	Sunnylands Nursery School	Controlled Nursery School	
Town	Carrickfergus	Oakfield Nursery Unit	Controlled Nursery Unit	Oakfield Primary School and Nursery Unit
Village	Greenisland	Silverstream Nursery Unit	Controlled Nursery Unit	Silverstream Primary School and Nursery Unit
Town	Carrickfergus	Victoria Nursery Unit	Controlled Nursery Unit	Victoria Primary School and Nursery Unit
Village	Whitehead	Whitehead Nursery Unit	Controlled Nursery Unit	Whitehead Primary School and Nursery Unit
Town	Carrickfergus	Acorn Integrated Nursery Unit	Grant Maintained Nursery School Unit	Acorn Integrated Primary School and Nursery Unit
Village	Greenisland	Alphabet Playgroup	Voluntary/Private Nursery/Playgroup	
Village	Whitehead	Banana Bunch Playgroup	Voluntary/Private Nursery/Playgroup	
Town	Carrickfergus	Greengables Pre-School	Voluntary/Private Nursery/Playgroup	Carrickfergus Central Primary School
Town	Carrickfergus	Humpty Dumpty Pre-school	Voluntary/Private Nursery/Playgroup	Downshire School
Town	Carrickfergus	Kilroot Playgroup	Voluntary/Private Nursery/Playgroup	
Town	Carrickfergus	Mount St Nicholas Playgroup	Voluntary/Private Nursery/Playgroup	
Town	Carrickfergus	Rainbow Playgroup	Voluntary/Private Nursery/Playgroup	
Town	Carrickfergus	Woodburn Pre-School Playgroup	Voluntary/Private Nursery/Playgroup	
Town	Larne	Linn Nursery Unit	Controlled Nursery Unit	Linn Primary School Nursery Unit
Town	Larne	Moyle Nursery Unit	Controlled Nursery Unit	Moyle Primary School and Nursery Unit
Town	Larne	Corran Integrated Nursery Unit	Grant Maintained Nursery School Unit	Corran Integrated Primary and Nursery
Town	Larne	St Anthony's Nursery School	Maintained Nursery School	St Anthony's Primary
Village	Carnlough	Carnlough Community Nursery Unit	Maintained Nursery Unit	St John's Primary School
Village	Ballycarry	Ballycarry Pre-school	Voluntary/Private Nursery/Playgroup	
Village	Glenarm	Glenarm Community Pre-School	Voluntary/Private Nursery/Playgroup	
Small Settlement	Gleno	Gleno Pre-School	Voluntary/Private Nursery/Playgroup	
Village	Glynn	Hansel & Gretel Pre School	Voluntary/Private Nursery/Playgroup	
Town	Larne	Harbour Bears Pre-School	Voluntary/Private Nursery/Playgroup	
Town	Larne	Little Robins Pre-School	Voluntary/Private Nursery/Playgroup	
Village	Ballystrudder	Playaway Pre-school	Voluntary/Private Nursery/Playgroup	
Countryside		Rainbow Private Day Nursery	Voluntary/Private Nursery/Playgroup	

Primary Schools

Town	Ballymena	Ballykeel Primary School	Controlled Primary School
Town	Ballymena	Ballymena Primary School	Controlled Primary School
Village	Broughshane	Broughshane Primary School	Controlled Primary School
Village	Cullybackey	Buick Memorial Primary School	Controlled Primary School
Town	Ballymena	Camphill Primary School	Controlled Primary School
Countryside		Carnaghts Primary School	Controlled Primary School
Town	Ballymena	Carniny Primary School	Controlled Primary School
Village	Clough	Clough Primary School	Controlled Primary School
Town	Ballymena	Dunclug Primary School	Controlled Primary School
Village	Ahoghill	Fourtowns Primary School	Controlled Primary School
Town	Ballymena	Gracehill Primary School	Controlled Primary School
Town	Ballymena	Harryville Primary School	Controlled Primary School
Countryside		Hazelbank Primary School	Controlled Primary School
Countryside		Kells & Connor Primary School	Controlled Primary School
Countryside		Kirkinriola Primary School	Controlled Primary School
Countryside		Longstone Primary School	Controlled Primary School
Countryside		Moorfields Primary School	Controlled Primary School
Village	Portglenone	Portglenone Primary School	Controlled Primary School
Countryside		The Diamond Primary School	Controlled Primary School
Town	Ballymena	Braidside Integrated Primary School	Grant Maintained Integrated Primary School
Village	Martinstown	Glenravel Primary School	Maintained Primary School
Town	Ballymena	St Brigid's Primary School (Ballymena)	Maintained Primary School
Town	Ballymena	St Colmcilles Primary School (Ballymena)	Maintained Primary School
Village	Cargan	St Mary's Primary School (Cargan)	Maintained Primary School
Village	Portglenone	St Mary's Primary School (Portglenone)	Maintained Primary School
Countryside		St Paul's Primary School	Maintained Primary School
Countryside		Millquarter Primary School, Toomebridge	Maintained Primary School
Town	Carrickfergus	Carrickfergus Central Primary School	Controlled Primary School
Town	Carrickfergus	Carrickfergus Model Primary School	Controlled Primary School
Town	Carrickfergus	Eden Primary School (Carrickfergus)	Controlled Primary School
Village	Greenisland	Greenisland Primary School	Controlled Primary School
Town	Carrickfergus	Oakfield Primary School	Controlled Primary School
Village	Greenisland	Silverstream Primary School	Controlled Primary School
Town	Carrickfergus	Sunnylands Primary School	Controlled Primary School
Town	Carrickfergus	Victoria Primary School	Controlled Primary School
Village	Whitehead	Whitehead Primary School	Controlled Primary School
Town	Carrickfergus	Woodburn Primary School	Controlled Primary School
Town	Carrickfergus	Acorn Integrated Primary School	Grant Maintained Integrated Primary School
Town	Carrickfergus	St Nicholas' Primary School	Maintained Primary School
Town	Carrickfergus	Woodlawn Primary School	Controlled Primary School
Village	Carnlough	Carnlough Integrated Primary School	Controlled Integrated Primary School
Village	Ballygalley	Cairncastle Primary School	Controlled Primary School

Small Settlement	Carnalbanagh	Carnalbanagh Primary School	Controlled Primary School
Village	Glynn	Glynn Primary School	Controlled Primary School
Town	Larne	Larne & Inver Primary School	Controlled Primary School
Town	Larne	Linn Primary School	Controlled Primary School
Town	Larne	Moyle Primary School	Controlled Primary School
Countryside		Mullaghdubh Primary School	Controlled Primary School
Town	Larne	Olderfleet Primary School	Controlled Primary School
Small Settlement	Mounthill	Toreagh Primary School	Controlled Primary School
Town	Larne	Corran Integrated Primary School	Grant Maintained Integrated Primary School
Countryside		Kilcoan Primary School	Other Maintained Primary School
Village	Glenarm	Seaview Primary School	Maintained Primary School
Town	Larne	St Anthony's Primary School	Maintained Primary School
Village	Carnlough	St John's Primary School (Carnlough)	Maintained Primary School
Town	Larne	St MacNissi's Primary School (Larne)	Maintained Primary School
Village	Ballycarry	Ballycarry Primary School	Controlled Primary School
Countryside		Upper Ballyboley Primary School	Controlled Primary School

Post Primary Schools

Town	Ballymena	Ballymena Academy	Voluntary Grammar School
Town	Ballymena	Cambridge House Grammar School	Controlled Grammar
Village	Cullybackey	Cullybackey College	Controlled Secondary School
Town	Ballymena	Dunclug College	Controlled Secondary School
Town	Ballymena	Slemish Integrated College	Grant Maintained Integrated Secondary School
Town	Ballymena	St Louis' Grammar	Voluntary Grammar School (Denominational)
Town	Ballymena	St Patrick's College (Ballymena)	Maintained Secondary School
Town	Carrickfergus	Carrickfergus Grammar School	Controlled Grammar
Town	Carrickfergus	Carrickfergus College	Controlled Secondary School
Town	Carrickfergus	Downshire School	Controlled Secondary School
Town	Carrickfergus	Ulidia Integrated College	Grant Maintained Integrated Secondary School
Town	Larne	Larne Grammar	Voluntary Grammar School
Town	Larne	Larne High School	Controlled Secondary School
Countryside		St Killian's College	Maintained Secondary School

Special Schools

Town	Ballymena	Castletower Special School including Pre-School	Controlled
Town	Larne	Roddensvale Special School including Pre School	Controlled

Independent School

Town	Ballymena	Living Rivers Christian School	Independent
------	-----------	--------------------------------	-------------

Appendix 1.2: School Occupancy and Spare Capacity 2012 - 2013

Source: NEELB Borough Councils 2012/13 Occupancy Rates, Spare Capacity Analysis, Live Births by Ward and School Age Population Projections
www.neelb.org.uk/resources/assets/attachment/full/0/24388.pdf

BALLYMENA BOROUGH COUNCIL

CONTROLLED NURSERY SCHOOLS AND UNITS

School	Physical Capacity	06/07	07/08	08/09	09/10	10/11	11/12	12/13	Spare Capacity	Occupancy Rate
Ballymena	104	88	91	100	95	100	103	101	3	97%
Dunclug	78	80	78	78	78	78	78	78	0	100%
Ballykeel (FT Unit)	52	52	52	52	53	53	54	52	0	100%
Broughshane (PT Unit)	26	26	26	26	26	26	26	26	0	100%
Buick Mem (PT Unit)	26	26	26	26	26	26	27	27	-1	104%
Clough (PT Unit)	26	16	16	16	17	16	26	26	0	100%
Gracehill PS (PT Unit)	26	26	26	26	26	26	26	26	0	100%
Harryville (PT Unit)	26	26	26	25	26	26	27	27	-1	104%
Totals	364	340	341	349	347	351	367	363	1	100%

MAINTAINED NURSERY UNITS

School	Physical Capacity	06/07	07/08	08/09	09/10	10/11	11/12	12/13	Spare Capacity	Occupancy Rate
St Mary's PS P'one (FT Unit)	26	27	27	26	26	26	26	26	0	100%
Totals	26	27	27	26	26	26	26	26	0	100%

GRANT-MAINTAINED INTEGRATED NURSERY SCHOOLS AND UNITS

School	Physical Capacity	06/07	07/08	08/09	09/10	10/11	11/12	12/13	Spare Capacity	Occupancy Rate
Braidside (Unit)	26	26	27	26	26	26	26	26	0	100%
Totals	26	26	27	26	26	26	26	26	0	100%

CONTROLLED PRIMARY

School	Physical Capacity	06/07	07/08	08/09	09/10	10/11	11/12	12/13	Spare Capacity	Occupancy Rate
Ballee	0	71	73	61	40	0	0	0	0	0%
Ballykeel	406	270	267	268	291	297	319	341	65	84%
Ballymena	369	368	360	336	330	316	301	280	89	76%
Broughshane	319	295	289	287	300	293	307	313	6	98%
Buick Mem	472	356	349	333	328	330	323	323	149	68%
Camphill	390	322	352	357	360	375	378	382	8	98%
Carnaghts	118	109	106	92	97	102	102	98	20	83%
Carniny	275	252	245	257	260	269	274	282	-7	103%
Clough	161	124	136	139	144	152	165	166	-5	103%
Dunclug	261	115	120	108	90	86	89	85	176	33%
Fourtowns	262	228	227	219	218	219	231	250	12	95%
Gracehill	406	409	413	408	405	410	401	405	1	100%
Harryville	254	122	103	88	74	96	89	70	184	28%
Hazelbank	120	105	100	96	95	96	113	109	11	91%
Kells & Connor	203	194	186	177	181	177	176	177	26	87%
Kirkinriola	95	78	89	99	105	93	56	57	38	60%
Longstone	73	56	57	58	49	42	46	47	26	64%
Moorfields	220	217	216	218	214	204	205	207	13	94%
Portglenone	204	150	151	144	125	119	101	101	103	50%
The Diamond	138	114	116	119	130	130	133	131	7	95%
Totals	4,746	3,884	3,882	3,803	3,796	3,806	3,809	3,824	922	81%

BALLYMENA BOROUGH COUNCIL**MAINTAINED PRIMARY**

School	Physical Capacity	06/07	07/08	08/09	09/10	10/11	11/12	12/13	Spare Capacity	Occupancy Rate
Glenravel	162	131	143	143	149	155	163	162	0	100%
Millquarter	145	103	115	124	139	143	138	135	10	93%
St Brigid's (B'mena)	319	0	308	311	321	326	331	336	-17	105%
St Colmcille's (B'mena)	319	0	327	321	313	316	300	316	3	99%
St Mary's (Cargan)	125	87	78	75	74	72	66	77	48	62%
St Mary's (P'glenone)	203	175	190	185	182	182	188	202	1	100%
St Paul's (A'hill)	81	0	0	27	30	32	27	30	51	37%
All Saints'	0	216	0	0	0	0	0	0	0	0%
Braid	0	24	23	18	20	16	0	0	0	0%
St Joseph's (Ahoghill)	0	17	18	0	0	0	0	0	0	0%
St Joseph's (Ballymena)	0	73	0	0	0	0	0	0	0	0%
St Louis (Ballymena)	0	284	0	0	0	0	0	0	0	0%
St Mary's (B'mena)	0	45	0	0	0	0	0	0	0	0%
St Patrick's (A'hill)	0	26	5	0	0	0	0	0	0	0%
Totals	1,354	1,181	1,207	1,204	1,228	1,242	1,213	1,258	96	93%

GRANT-MAINTAINED INTEGRATED PRIMARY

School	Physical Capacity	06/07	07/08	08/09	09/10	10/11	11/12	12/13	Spare Capacity	Occupancy Rate
Braidside	348	317	330	345	335	332	340	344	4	99%
Totals	348	317	330	345	335	332	340	344	4	99%

CONTROLLED SPECIAL SCHOOLS

School	Physical Capacity	06/07	07/08	08/09	09/10	10/11	11/12	12/13	Spare Capacity	Occupancy Rate
Castle Tower	305	0	268	265	254	261	256	255	50	84%
Beechgrove	0	24	0	0	0	0	0	0	0	0%
Dunfane	0	154	0	0	0	0	0	0	0	0%
Loughan	0	77	0	0	0	0	0	0	0	0%
Totals	305	255	268	265	254	261	256	255	50	84%

CONTROLLED SECONDARY

School	Physical Capacity	06/07	07/08	08/09	09/10	10/11	11/12	12/13	Spare Capacity	Occupancy Rate
Ballee	525	334	327	307	299	298	270	227	298	43%
Cullybackey	700	673	687	688	683	689	682	674	26	96%
Dunclug	600	626	617	628	644	639	657	703	-103	117%
Totals	1,825	1,633	1,631	1,623	1,626	1,626	1,609	1,604	221	88%

BALLYMENA BOROUGH COUNCIL**CONTROLLED SECONDARY LSC**

School	Physical Capacity	06/07	07/08	08/09	09/10	10/11	11/12	12/13	Spare Capacity	Occupancy Rate
Ballee	0	1	1	1	1	0	0	0	0	0%
Totals	0	1	1	1	1	0	0	0	0	0%

CONTROLLED GRAMMAR

School	Physical Capacity	06/07	07/08	08/09	09/10	10/11	11/12	12/13	Spare Capacity	Occupancy Rate
Cambridge House	1,030	1,062	1,057	1,060	1,034	1,043	978	926	104	90%
Totals	1,030	1,062	1,057	1,060	1,034	1,043	978	926	104	90%

MAINTAINED SECONDARY

School	Physical Capacity	06/07	07/08	08/09	09/10	10/11	11/12	12/13	Spare Capacity	Occupancy Rate
St Patrick's College (B'mena)	760	421	415	470	505	524	515	513	247	68%
Totals	760	421	415	470	505	524	515	513	247	68%

GRANT-MAINTAINED INTEGRATED POST PRIMARY SCHOOLS

School	Physical Capacity	06/07	07/08	08/09	09/10	10/11	11/12	12/13	Spare Capacity	Occupancy Rate
Slemish	720	718	736	748	746	753	759	796	-76	111%
Totals	720	718	736	748	746	753	759	796	-76	111%

VOLUNTARY GRAMMAR

School	Physical Capacity	06/07	07/08	08/09	09/10	10/11	11/12	12/13	Spare Capacity	Occupancy Rate
Ballymena Academy	1,200	1,193	1,187	1,201	1,205	1,206	1,219	1,217	-17	101%
St Louis Grammar	960	947	955	952	952	948	965	985	-25	103%
Totals	2,160	2,140	2,142	2,153	2,157	2,154	2,184	2,202	-42	102%

Total all sectors	13,664							12,137		
--------------------------	---------------	--	--	--	--	--	--	---------------	--	--

Analysis of Spare Capacity in Ballymena Borough Council Area by Sector - 2012/13

Sector	Physical Capacity 2012/13	Enrolment 2012/13	Spare Capacity	Spare Capacity %
Controlled Nursery Schools/Units	364	363	1	0%
Controlled Integrated Nursery Schools/Units	N/A			
Controlled Primary	4,746	3,824	922	19%
Controlled Primary LSC	N/A			
Controlled Integrated Primary	N/A			
Controlled Integrated Primary LSC	N/A			
Controlled Special	305	255	50	16%
Controlled Secondary	1,825	1,604	221	12.11%
Controlled Secondary LSC	-	-	-	0.00%
Controlled Integrated Secondary	N/A			
Controlled Grammar	1,030	926	104	10.10%
Sub Total	8,270	6,972	1,298	15.70%
Maintained Nursery Schools/Units	26	26	-	0.00%
Maintained Primary	1,354	1,258	96	7.09%
Maintained Primary LSC	N/A			
Maintained Special	N/A			
Maintained Secondary	760	513	247	32.50%
Maintained Secondary LSC	N/A			
Sub Total	2,140	1,797	343	16.03%
Grant Maintained Integrated Nursery Schools/Units	26	26	-	0.00%
Grant Maintained Integrated Primary	348	344	4	1.15%
Grant Maintained Integrated Post Primary	720	796	-76	-10.56%
Sub Total	1,094	1,166	-72	-6.58%
Irish Medium Primary	N/A			
Sub Total	-	-	-	-
Voluntary Grammar Prep	N/A			
Voluntary Grammar	2,160	2,202	-42	-1.94%
Sub Total	2,160	2,202	-42	-1.94%
	13,664	12,137	1,527	11.18%

CARRICKFERGUS BOROUGH COUNCIL**CONTROLLED NURSERY SCHOOLS AND UNITS**

School	Physical Capacity	06/07	07/08	08/09	09/10	10/11	11/12	12/13	Spare Capacity	Occupancy Rate
Sunnylands Nursery	104	104	104	104	104	104	104	104	0	100%
Oakfield Nursery (FT Unit)	52	52	52	52	52	52	51	52	0	100%
Silverstream (FT Unit)	26	26	26	27	26	27	26	26	0	100%
Victoria Nursery (PT Unit)	52	52	52	52	52	52	52	52	0	100%
Whitehead (PT Unit)	52	52	52	52	52	52	52	52	0	100%
Totals	286	286	286	287	286	287	285	286	0	100%

GRANT MAINTAINED INTEGRATED NURSERY SCHOOLS AND UNITS

School	Physical Capacity	06/07	07/08	08/09	09/10	10/11	11/12	12/13	Spare Capacity	Occupancy Rate
Acorn (Unit)	26	26	26	27	27	27	26	26	0	100%
Totals	26	26	26	27	27	27	26	26	0	100%

CONTROLLED PRIMARY

School	Physical Capacity	06/07	07/08	08/09	09/10	10/11	11/12	12/13	Spare Capacity	Occupancy Rate
Carrickfergus Central	290	190	160	150	138	121	108	87	203	30%
Carrickfergus Model	406	407	414	410	406	401	404	407	-1	100%
Eden (C'fergus)	213	204	200	205	209	210	211	211	2	99%
Greenisland	401	373	381	379	383	392	391	400	1	100%
Oakfield	369	308	305	307	317	312	317	303	66	82%
Silverstream	225	118	102	90	93	97	98	89	136	40%
Sunnylands	290	166	152	141	125	115	116	115	175	40%
Victoria	575	503	497	460	467	441	446	453	122	79%
Whitehead	390	336	343	348	362	384	378	379	11	97%
Woodburn	193	191	194	194	191	193	193	189	4	98%
Woodlawn	310	287	281	281	269	275	257	286	24	92%
Totals	3,662	3,083	3,029	2,965	2,960	2,941	2,919	2,919	743	80%

MAINTAINED PRIMARY

School	Physical Capacity	06/07	07/08	08/09	09/10	10/11	11/12	12/13	Spare Capacity	Occupancy Rate
St Nicholas'	232	106	107	111	126	134	143	147	85	63%
Lourdes	0	39	42	45	33	20	0	0	0	0%
Totals	232	145	149	156	159	154	143	147	85	63%

CARRICKFERGUS BOROUGH COUNCIL**GRANT-MAINTAINED INTEGRATED PRIMARY**

School	Physical Capacity	06/07	07/08	08/09	09/10	10/11	11/12	12/13	Spare Capacity	Occupancy Rate
Acorn	203	204	203	202	203	201	201	204	-1	100%
Totals	203	204	203	202	203	201	201	204	-1	100%

CONTROLLED SECONDARY

School	Physical Capacity	06/07	07/08	08/09	09/10	10/11	11/12	12/13	Spare Capacity	Occupancy Rate
Carrickfergus	900	787	794	794	746	716	685	671	229	75%
Downshire	800	799	806	781	796	800	782	725	75	91%
Totals	1,700	1,586	1,600	1,575	1,542	1,516	1,467	1,396	304	82%

CONTROLLED GRAMMAR

School	Physical Capacity	06/07	07/08	08/09	09/10	10/11	11/12	12/13	Spare Capacity	Occupancy Rate
Carrickfergus	800	804	801	798	804	808	816	814	-14	102%
Totals	800	804	801	798	804	808	816	814	-14	102%

GRANT-MAINTAINED INTEGRATED POST PRIMARY SCHOOLS

School	Physical Capacity	06/07	07/08	08/09	09/10	10/11	11/12	12/13	Spare Capacity	Occupancy Rate
Ulidia	500	532	532	537	534	536	552	576	-76	115%
Totals	500	532	532	537	534	536	552	576	-76	115%

Total all sectors	7,409							6,368		
--------------------------	--------------	--	--	--	--	--	--	--------------	--	--

Analysis of Spare Capacity in Carrickfergus Borough Council Area by Sector - 2012/13

Sector	Physical Capacity 2012/13	Enrolment 2012/13	Spare Capacity	Spare Capacity %
Controlled Nursery Schools/Units	286	286	0	0.00%
Controlled Integrated Nursery Schools/Units	N/A			
Controlled Primary	3,662	2,919	743	20.29%
Controlled Primary LSC	N/A			
Controlled Integrated Primary	N/A			
Controlled Integrated Primary LSC	N/A			
Controlled Special	N/A			
Controlled Secondary	1,700	1,396	304	17.88%
Controlled Secondary LSC	N/A			
Controlled Integrated Secondary	N/A			
Controlled Grammar	800	814	-14	-1.75%
Sub Total	6,448	5,415	1,033	16.02%
Maintained Nursery Schools/Units	N/A			
Maintained Primary	232	147	85	36.64%
Maintained Primary LSC	N/A			
Maintained Special	N/A			
Maintained Secondary	N/A			
Maintained Secondary LSC	N/A			
Sub Total	232	147	85	36.64%
Grant Maintained Integrated Nursery Schools/Units	26	26	-	0.00%
Grant Maintained Integrated Primary	203	204	-1	-0.49%
Grant Maintained Integrated Post Primary	500	576	-76	-15.20%
Sub Total	729	806	-77	-10.56%
Irish Medium Primary	N/A			
Sub Total	-	-	-	-
Voluntary Grammar Prep	N/A			
Voluntary Grammar	N/A			
Sub Total	-	-	-	-
	7,409	6,368	1,041	14.05%

LARNE BOROUGH COUNCIL**CONTROLLED NURSERY SCHOOLS AND UNITS**

School	Physical Capacity	06/07	07/08	08/09	09/10	10/11	11/12	12/13	Spare Capacity	Occupancy Rate
Linn (FT Unit)	52	52	52	52	52	52	52	52	0	100%
Moyle (PT Unit)	52	52	52	52	52	53	53	52	0	100%
Totals	104	104	104	104	104	105	105	104	0	100%

MAINTAINED NURSERY UNITS

School	Physical Capacity	06/07	07/08	08/09	09/10	10/11	11/12	12/13	Spare Capacity	Occupancy Rate
St Anthony's	52	52	52	53	52	53	52	52	0	100%
Carnlough Nursery (PT Unit)	52	37	26	37	30	36	32	27	25	52%
Totals	104	89	78	90	82	89	84	79	25	76%

GRANT MAINTAINED INTEGRATED NURSERY UNITS

School	Physical Capacity	06/07	07/08	08/09	09/10	10/11	11/12	12/13	Spare Capacity	Occupancy Rate
Corran (PT Unit)	26	26	26	26	26	26	26	26	0	100%
Totals	26	26	26	26	26	26	26	26	0	100%

CONTROLLED PRIMARY

School	Physical Capacity	06/07	07/08	08/09	09/10	10/11	11/12	12/13	Spare Capacity	Occupancy Rate
Ballycarry	116	119	107	102	92	84	82	72	44	62%
Ballynure*	154	112	124	115	100	106	114	117	37	76%
Cairncastle	137	136	116	109	116	123	132	125	12	91%
Carnalbanagh	58	59	52	46	52	48	43	38	20	66%
Glynn	103	50	56	60	73	71	80	83	20	81%
Larne & Inver	237	211	200	183	181	184	166	178	59	75%
Linn	380	367	374	349	338	341	351	365	15	96%
Moyle	300	225	234	235	251	252	264	279	21	93%
Mullaghduh	78	49	45	44	45	58	64	62	16	79%
Olderfleet	198	189	174	176	185	185	171	176	22	89%
Toreagh	105	80	82	79	82	93	98	105	0	100%
Up Ballyboley	100	54	54	46	42	40	41	46	54	46%
Totals*	1,966	1,651	1,618	1,544	1,557	1,585	1,606	1,646	320	84%

*Ballynure Primary School falls outside Mid & East Antrim and therefore the total spare capacity and occupancy rates are inaccurate.

LARNE BOROUGH COUNCIL**CONTROLLED PRIMARY LSC**

School	Physical Capacity	06/07	07/08	08/09	09/10	10/11	11/12	12/13	Spare Capacity	Occupancy Rate
Moyle	30	20	22	23	19	22	28	29	1	97%
Totals	30	20	22	23	19	22	28	29	1	97%

CONTROLLED INTEGRATED PRIMARY

School	Physical Capacity	06/07	07/08	08/09	09/10	10/11	11/12	12/13	Spare Capacity	Occupancy Rate
Carnlough	62	41	47	45	44	47	40	40	22	65%
Totals	62	41	47	45	44	47	40	40	22	65%

MAINTAINED PRIMARY

School	Physical Capacity	06/07	07/08	08/09	09/10	10/11	11/12	12/13	Spare Capacity	Occupancy Rate
Kilcoan	87	81	66	63	53	43	39	40	47	46%
St Anthony's	476	109	105	93	94	90	82	77	399	16%
St John's (Carnlough)	192	159	160	149	146	138	146	152	40	79%
St MacNissi's (Larne)	261	219	215	211	213	211	214	211	50	81%
Seaview	121	88	80	68	63	57	51	35	86	29%
Totals	1,137	656	626	584	569	539	532	515	622	45%

GRANT-MAINTAINED INTEGRATED PRIMARY

School	Physical Capacity	06/07	07/08	08/09	09/10	10/11	11/12	12/13	Spare Capacity	Occupancy Rate
Corran	203	175	187	182	179	183	186	178	25	88%
Totals	203	175	187	182	179	183	186	178	25	88%

CONTROLLED SPECIAL SCHOOLS

School	Physical Capacity	06/07	07/08	08/09	09/10	10/11	11/12	12/13	Spare Capacity	Occupancy Rate
Roddensvale	76	78	80	77	83	82	90	79	-3	104%
Totals	76	78	80	77	83	82	90	79	-3	104%

CONTROLLED SECONDARY

School	Physical Capacity	06/07	07/08	08/09	09/10	10/11	11/12	12/13	Spare Capacity	Occupancy Rate
Larne	750	531	489	503	487	489	487	486	264	65%
Totals	750	531	489	503	487	489	487	486	264	65%

LARNE BOROUGH COUNCIL

CONTROLLED SECONDARY LSC

School	Physical Capacity	06/07	07/08	08/09	09/10	10/11	11/12	12/13	Spare Capacity	Occupancy Rate
Larne	20	23	20	21	24	23	19	20	0	100%
Totals	20	23	20	21	24	23	19	20	0	100%

MAINTAINED SECONDARY

School	Physical Capacity	06/07	07/08	08/09	09/10	10/11	11/12	12/13	Spare Capacity	Occupancy Rate
St Killian's College	830	0	0	0	805	824	829	806	24	97%
St Comgall's	0	198	181	164	0	0	0	0	0	0%
Totals	830	198	181	164	805	824	829	806	24	97%

VOLUNTARY GRAMMAR



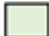
School	Physical Capacity	06/07	07/08	08/09	09/10	10/11	11/12	12/13	Spare Capacity	Occupancy Rate
Larne	735	729	721	734	723	729	741	740	-5	101%
St MacNissi's	0	597	597	601	0	0	0	0	0	0%
Totals	735	1,326	1,318	1,335	723	729	741	740	-5	101%

Total all sectors	6,043	4,748
--------------------------	--------------	--------------

Analysis of Spare Capacity in Larne Borough Council Area by Sector - 2012/13

Sector	Physical Capacity 2012/13	Enrolment 2012/13	Spare Capacity	Spare Capacity %
Controlled Nursery Schools/Units	104	104	0	0.00%
Controlled Integrated Nursery Schools/Units	N/A			
Controlled Primary	1,966	1,646	320	16.28%
Controlled Primary LSC	30	29	1	3.33%
Controlled Integrated Primary	62	40	22	35.48%
Controlled Integrated Primary LSC	N/A			
Controlled Special	76	79	-3	-3.95%
Controlled Secondary	750	486	264	35.20%
Controlled Secondary LSC	20	20	0	0.00%
Controlled Integrated Secondary	N/A			
Controlled Grammar	N/A			
Sub Total	3,008	2,404	604	20.08%
Maintained Nursery Schools/Units	104	79	25	24.04%
Maintained Primary	1,137	515	622	54.71%
Maintained Primary LSC	N/A			
Maintained Special	N/A			
Maintained Secondary	830	806	24	2.89%
Maintained Secondary LSC	N/A			
Sub Total	2,071	1,400	671	32.40%
Grant Maintained Integrated Nursery Schools/Units	26	26	-	0.00%
Grant Maintained Integrated Primary	203	178	25	12.32%
Grant Maintained Integrated Post Primary	N/A			
Sub Total	229	204	25	10.92%
Irish Medium Primary	N/A			
Sub Total	-	-	-	-
Voluntary Grammar Prep	N/A			
Voluntary Grammar	735	740	-5	-0.68%
Sub Total	735	740	-5	-0.68%
	6,043	4,748	1,295	21.43%

Appendix 1.3: GP Practices within Mid & East Antrim June 2015

	Ballymena
	Carrickfergus
	Larne

GP Practice	Address	Settlement	Total Patients
MAINE MEDICAL, THE HEALTH CENTRE	PORTGLENONE ROAD	AHOGHILL	4665
THE HEALTH CENTRE	CUSHENDALL ROAD	BALLYMENA	3520
CULLYBACKEY HEALTH CENTRE	TOBER PARK	CULLYBACKEY	7240
THE SURGERY	77 GALGORM ROAD	BALLYMENA	2605
THE HEALTH CENTRE	CUSHENDALL ROAD	BALLYMENA	2510
THE GABLES	45 WAVENEY ROAD	BALLYMENA	3231
THE HEALTH CENTRE	CUSHENDALL ROAD	BALLYMENA	4308
CUSHENDALL ROAD	BALLYMENA	BALLYMENA	3113
THE HEALTH CENTRE	76 MAIN STREET	BROUGHSHANE	6497
PORTGLENONE HEALTH CENTRE	17 TOWNHILL ROAD	PORTGLENONE	6776
THE HEALTH CENTRE	CUSHENDALL ROAD	BALLYMENA	4043
SMITHFIELD MEDICAL CENTRE	7 SMITHFIELD PLACE	BALLYMENA	2308
KELLS & CONNOR MEDICAL CENTRE	36 CHURCH ROAD	KELLS	3603
MAINE MEDICAL PRACTICE	OLD MILL PARK, MAIN STREET	CULLYBACKEY	4928
ROCKFIELD MEDICAL CENTRE	BALLYMENA	BALLYMENA	3995
OLD BANK SURGERY	97 MILL STREET	BALLYMENA	3790
THE HEALTH CENTRE	CUSHENDALL ROAD	BALLYMENA	3950
MEADOWBRIDGE SURGERY	SLAUGHTERFORD ROAD	WHITEHEAD	8841
OLD SCHOOL SURGERY	54 STATION ROAD	GREENISLAND	9498
THE HEALTH CENTRE	TAYLORS AVENUE	CARRICKFERGUS	7313
THE HEALTH CENTRE	TAYLORS AVENUE	CARRICKFERGUS	14698
BLACKARCH SURGERY, LARNE HEALTH CENTRE	GLOUCESTER AVENUE	LARNE	2083
CLONEY	GLENARM	GLENARM	1997

INVER SURGERY	MOYLE MEDICAL CENTRE, OLD GLENARM ROAD	LARNE	4901
CORRAN SURGERY	MOYLE MEDICAL CENTRE, OLD GLENARM ROAD	LARNE	6023
VICTORIA SURGERY	MOYLE MEDICAL CENTRE, OLD GLENARM ROAD	LARNE	5597
THE HEALTH CENTRE	GLOUCESTER AVENUE	LARNE	3046
THE HEALTH CENTRE	GLOUCESTER AVENUE	LARNE	3770

Source: Hugh Nelson, Northern Health and Social Care Trust, June 2015

Appendix 1.4: Dental Surgeries within Mid & East Antrim June 2015

	Ballymena
	Carrickfergus
	Larne

Dental Surgery	Address	Town	Max Approved Places
Bell & Thom Dental Surgeons	17 - 19 Main Street	Portglenone	3
Portglenone Dental Care	58 Main Street	Portglenone	3
Gardiner Dental Practice	6-8 Henry Street	Ballymena	5
Kennedy Orthodontics	43 Ballylesson Road	Ballymena	6
Broughshane Dental Practice	25 Main Street	Broughshane	1
B M Withers Dental Practice	25 Linenhall Street	Ballymena	1
Ballymena Specialist Dental Clinic	19 George Street	Ballymena	2
Orthoplus Orthodontic Centre	12 Ballymoney Road	Ballymena	3
Smiles Dental Care	14 Ballymoney Road	Ballymena	4
S D Manson BDS & Associates Dental Surgery	13-15 Duke Street	Ballymena	3
03 Dental Studio	29-33 Fountain Place	Ballymena	1
Jones Dental Care	20 Broughshane Street	Ballymena	5
Quigley & Martin	73 - 75 Broughshane Street	Ballymena	4
P V Crooks and Associates	21-23 Castle Street	Ballymena	2
Maine Dental Practice	14b Old Mill Park	Cullybackey	4
The DeCoursey Dental Practice	Unit 3	Carrickfergus	3
Harper Dental Care	22 North Street	Carrickfergus	2
Clements Dental Care	22 West Street	Carrickfergus	3
Deacon Hanna & Thompson	51 Victoria Road	Carrickfergus	2
Radiance Oral Healthcare	19 St Brides Street	Carrickfergus	2
Greenisland Dental Practice	50 Station Road	Greenisland	2
Whitehead Dental Practice	14 Marine Parade	Whitehead	2
Donnelly Dental	9 - 11 Glenarm Road	Larne	3
Moyle Dental Care	137 Old Glenarm Road	Larne	2
Morrison Dental Surgery	11 Thorndale Avenue	Larne	2
J Christie Dental Practice	14 Victoria Road	Larne	3
Clear Dental Care NI Limited	11 Victoria Road	Larne	3

Source: Hugh Nelson, Northern Health and Social Care Trust, June 2015

Appendix 1.6: Libraries NI Board Existing and Approved Opening Hours




Library	Opening Hours April 2014	Opening Hours November 2014 *	Approved Opening Hours
Belfast Central	57	55	54
Derry Central	57	54.5	54
Lisburn City	57	52	54
Bangor Carnegie	57	52	54
Omagh	57	51	54
Ballymena Central	57	48	50
Newry City	57	52	50
Enniskillen	57	51	50
Dungannon	57	51	50
Carrickfergus	57	51	50
Coleraine	57	53	50
Lurgan	57	51	50
Finaghy	48	41.5	50
Glengormley	57	48	50
Ormeau	48	46	45
Antrim	49.5	45	45
Portadown	48	45	45
Cookstown	57	48	45
Armagh	48	44.5	45
Downpatrick	48	45	45
Magherafelt	48	45	45
Banbridge	48	44.5	45
Strabane	48	44	45
Waterside	48	45.5	45
Limavady	48	45.5	40
Newcastle	40	40	40
Larne	48	45	40
Ballyhackamore	40.5	40.5	40
Holywood	40	40	40
Newtownards	40	40	40
Holywood Arches	40	40	40
Ballyclare	40	40	40
Lisburn Road	40	40	40
Grove	40	40	40
Newtownbreda	40	40	40
Shantallow	40	36	40
Ballymoney	40	40	40
Chichester	40	40	40
Warrenpoint	40	36	40
Cregagh	40	40	40
Colin Glen	40	40	40
Dundonald	40	40	40
Woodstock	30	30	40
Shankill	40.5	40.5	40
Kilkeel	40	40	40
Falls Road	40.5	40.5	40
Suffolk	40.5	38.45	40
Maghera	40	40	38

Ballynahinch	40	40	35
Rathcoole	40	40	35
Ballycastle	40	37.5	35
Donaghadee	40	40	35
Portstewart	40	40	35
Comber	40	40	35
Brownlow	40	39	35
Coalisland	40	40	35
Ardoyne	37	37	35
Whiterock	37	37	35
Irish and Local Studies	40	34	35
Keady	33	29	30
Lisnaskea	30	30	30
Portrush	40	38.5	28
Greystone	30	20	28
Irvinestown	30	30	28
Whitehead	30	26	28
Dromore	25	25	28
Creggan	30	26	28
Strathfoyle	30	30	28
Randalstown	30	30	25
Rathfriland	25	25	25
Greenisland	30	27	25
Castlederg	25	25	25
Dungiven	25.5	24.5	25
Tullycarnet	30	25	25
Bessbrook	25	25	25
Castlewellan	25	25	25
Saintfield	25	25	25
Carryduff	18	18	25
Moirá	18	18	25
Tandragee	25	25	25
Portaferry	18	18	18
Cushendall	18	18	18
Killyleagh	18	18	18
Crumlin	18	18	18
Kilrea	18	18	18
Cloughfern	18	18	18
Portglenone	18	18	18
Broughshane	18	18	18
Fivemiletown	18	18	18
Richhill	18	18	18
Draperstown	18	18	18
Fintona	18	18	18
Crossmaglen	18	18	18
Garvagh	18	18	18
Kells and Connor	18	18	18
Newtownstewart	18	18	18
Carnlough	18	18	18

* These opening hours were put in place as a temporary measure, as a result of the in-year budget savings required of Libraries NI.

Source: <http://www.librariesni.org.uk/News/Pages/Library-Opening-Hours-Policy-Approved-.aspx>

Appendix 1.7: Community Centres within Mid & East Antrim

	Ballymena
	Carrickfergus
	Larne

Ahoghill Community Centre	Ahoghill
Ballee Community Centre	Ballymena
Ballykeel Community Centre	Ballymena
Broughshane Community Centre and Playing Fields	Broughshane
Dunclug Community Centre	Ballymena
Galgorm/Gracehill Community Centre	Ballymena
Glenlough Community Centre	Ballymena
Kells and Connor Community Centre	Kells/Connor
Tullygarley Community Centre	Ballymena
Clough Community Centre	Ballymena
Dr John McKelvey Community Centre	Cullybackey
Harryville Community Centre	Ballymena
Portglenone Community Centre	Portglenone
Oakfield Community Development Centre	Carrickfergus
Sunnylands Community Centre	Carrickfergus
Woodburn Community Centre	Carrickfergus
Eden Community Centre	Carrickfergus
Castleview Community Centre, Whitehead	Whitehead
Greenisland Community Centre	Greenisland
Greenland Community Centre	Larne
Glynn Community Centre	Glynn
Glenlough Community Centre	Carnlough
Linn Road Community Centre	Larne
Ballycarry Community Centre	Ballycarry
Seacourt Community Centre	Larne
Millbrook Community Centre	Larne
Islandmagee Community Centre	Ballystrudder

Source: Mid & East Antrim Borough Council and Sport NI