

STATEMENT OF ACCOUNTS

Mid and East Antrim Borough Council
For the year ended 31st March 2020

Contents Page
Mid and East Antrim Borough

Content	Page Number
Narrative Report	3
Statement of the Council's and Chief Financial Officer's Responsibilities for the Statement of Accounts	12
Annual Governance Statement	13
Remuneration Report	27
Certificate of Chief Financial Officer	33
Council Approval of Statement of Accounts	33
Independent Auditor's Report to the members	34-37
Comprehensive Income and Expenditure Statement	39
Movement in Reserves Statement	40
Balance Sheet	41
Cash Flow Statement	42
Notes to Financial Statements	43

Narrative Report

Introduction

The Council's financial performance for the year ended 31st March 2020 is as set out in the Comprehensive Income and Expenditure Statement and its financial position is as set out in the Balance Sheet and Cash Flow Statement.

These financial statements have been prepared in line with the Code of Practice on Local Authority Accounting in the United Kingdom for the year ended 31st March 2020 (the Code) and the Department for Communities Accounts Direction, Circular LG 03/2020. It is the purpose of this foreword to explain, in an easily understandable way, the financial facts in relation to the Council.

This Statement of Accounts explains Mid and East Antrim Borough Council's finances during the financial year 2019/20 and its financial position at the end of that year. It follows approved accounting standards and is necessarily technical in parts.

The purpose of the Narrative Report is to provide information on the authority, its main objectives and strategies and the principal risks it faces.

Group Accounts

The Code requires Local Authorities to consider all their interests and to prepare a full set of group financial statements where they have material interests in subsidiaries, associates or joint ventures. Mid and East Antrim Borough Council does not have material interests in such bodies and accordingly is not required to prepare group financial statements.

The Movement in Reserves Statement

This Statement, as set out on page 40, shows the movement in the year on the different reserves held by Mid and East Antrim Borough Council, analysed into 'usable reserves' (i.e. those that can be applied to fund expenditure or reduce local taxation) and other reserves. The 'Surplus or (deficit) on the provision of services' line shows the true economic cost of providing Mid and East Antrim Borough Council's services, more details of which are shown in the Comprehensive Income and Expenditure Summary (CIES). These are different from the statutory amounts required to be charged to the General Fund Balance. The 'Net increase /Decrease before transfers to Earmarked Reserves line shows the statutory General Fund Balance before any discretionary transfers to or from earmarked reserves undertaken by Mid and East Antrim Borough Council.

The Comprehensive Income and Expenditure Statement

This statement, as set out on page 41, shows the accounting cost in the year of providing services in accordance with generally accepted accounting practices, rather than the amount to be funded from taxation. Authorities raise taxation to cover expenditure in accordance with regulations; this may be different from the accounting cost. The taxation position is shown in the Movement in Reserves Statement.

The Balance Sheet

The Balance Sheet, as set out on page 38, shows the value as at the Balance Sheet date of Mid and East Antrim Borough Council's assets and liabilities. The net assets of the Council (assets less liabilities) are matched by the reserves held by the Authority. Reserves are reported in two categories. The first category of reserves are usable reserves, ie those reserves that the Council may use to provide services, subject to the need to maintain a prudent level of reserves and any statutory limitations on their use (for example the Capital Receipts Reserve that may only be used to fund capital expenditure or repay debt). The second category of reserves are those that the authority is not able to use to provide services. This category of reserves includes reserves that hold unrealised gains and losses (for example the Revaluation Reserve), where amounts would only become available to provide services if the assets are sold; and reserves that hold timing differences shown in the Movement in Reserves Statement line 'Adjustments between accounting basis and funding basis under regulations'.

The Cash Flow Statement

The Cash Flow Statement shows the changes in cash and cash equivalents of the Council during the reporting period. The statement shows how the Council generates and uses cash and cash equivalents by classifying cash flows as operating, investing and financing activities. The amount of net cash flows arising from operating activities is a key indicator of the extent to which the operations of the Council are funded by way of taxation and grant income or from the recipients of services provided by the Council. Investing activities represent the extent to which cash outflows have been made for resources which are intended to contribute to the Council's future service delivery. Cash flows arising from financing activities are useful in predicting claims on future cash flows by providers of capital (i.e. borrowing) to the Council.

The Coronavirus Pandemic

The Covid-19 pandemic hit the UK towards the end of the 2019/20 financial year. On 24 March 2020 the Prime Minister announced national lockdown with significant restrictions on public life and the requirement on the population to remain at home. Given the timing of the pandemic, at the end of the financial year, there was minimal impact on the Council's 2019/20 financial outturn and the 2019/20 Statement of Accounts.

However, it is extremely likely during 2020/21, and beyond, that there will be a significant impact from Covid-19 on the Council's finances. The Council expects financial pressures to result from a sustained loss of income, the cost of the Covid-19 response and recovery and the likelihood of reduced funding in future years, as the demand on government resources shifts due to the impact of the pandemic. It is difficult at this time, in this early stage of recovery, to quantify the impact of Covid-19, when it remains to be determined what services will look like in the "new norm," how they will be provided, and the level of funding that is likely to be made available to deliver them.

The Council has been at the forefront of responding to the impact of Coronavirus. Mid & East Antrim Borough Council will continue to play a pivotal role in providing public services through the recovery stage of the pandemic, in support of the local community.

Valuations of Land and Buildings are carried out externally by Land and Property Services (LPS), in accordance with the methodologies and bases for estimation set out in the professional standards of the Royal Institution of Chartered Surveyors (RICS). As at the valuation date, LPS considers that due to the COVID-19 pandemic, there is a shortage of reliable market evidence for comparison purposes, to inform opinions of value. Therefore, the valuations provided by LPS were reported on the basis of 'material valuation uncertainty' as per VPS 3 and VPGA 10 of the RICS Global Standards. Consequently, less certainty, and a higher degree of caution, should be attached to the valuations than would normally be the case. However, LPS advised that their material uncertainty clause serves as a precaution and does not invalidate the valuation.

The table below provides detail on the impact the pandemic has had, or is likely to have, on the Mid & East Antrim Borough Council.

Provision of Services	In March 2020, the Council quickly put into action its plan to help delay the spread of the virus and manage the impact of its effects on services, staff and members of the public. The Council prioritised public safety and the provision of essential local services, together with practical support to local businesses and to the wider Mid & East Antrim community. The Council will continue to work closely with staff and suppliers to maintain essential services to residents across the Borough.
Council Workforce	The Covid-19 pandemic has impacted significantly on the necessary working arrangements for the Council's employees. Where possible, staff have been required to work from home. However, up to 217 employees had to be placed on furlough. The Council has worked hard to ensure all staff, including front line staff, are working safely and protected with appropriate PPE. A number of staff have been redeployed to address additional demand for Council services. Flexible working has been extended in support of staff with health conditions and caring responsibility.

Reserves, Financial Performance & Financial Position	Given the timing of the pandemic, there was minimal impact on the Council's financial performance in 2019/20. The Council has reviewed its valuation of assets & liabilities as at 31 March 2020, as a consequence of Covid-19, and has made appropriate provision. The Council will continue to keep valuations under review. It is acknowledged that market conditions are volatile and that estimation uncertainty is much higher, given Covid-19, than normal.
	The Covid-19 crisis will have a significant impact on the Council's 2020/21 budget. With loss of income and the cost of response and recovery, the financial pressure on the Council's General Fund in 2020/21 is predicted to be £7m. This is hoped to be offset by additional funding from Department for Communities and DAERA combined with utilisation of HMRC's Coronavirus Job Retention Scheme and reprofiling of the 2020/21 budget. It is likely that the financial effect on the current financial year will be able to be managed using the Council's Reserves.
Major Risks	The pandemic has resulted in a number of specific risks, which need to be assessed and managed; these include:
	· Inability to maintain essential services due to loss of essential suppliers or experienced staff
	· Inability to sustain the financial stability of the Council
	· Failure to deliver Health & Safety
	· Increase in community issues deriving from Covid-19
	· The Council's capacity to respond.
	· A deflated economy, leading to ongoing recovery issues across rural areas and town centres.
	· Impact on continuity of local business and tourism
	· Impact on the Domestic and Business Rate
	· Inadequate funding and financial support
Plans for Recovery	Risk assessments have been completed for all essential services and mitigation measures are being built into the Council's recovery plans.
	The Council's Recovery Plan focuses on :
	· Reinstating Services
	· Economic Recovery
	· Community Recovery
	· Financial Recovery
	· Positive Legacy
	The Recovery Process will be a significant focus for the Council both in the short and long term.

Performance Report

For the year ended 31 March 2020 the Council's increased its General Fund by £18,702 to £4,219,436. The Council's budget of £67.8m was reduced by £0.24m for prior year finalisation payment of district rates. The total net expenditure reported in the Comprehensive Income and Expenditure Statement is £63.4m.

Council's performance data is reported against each of the 6 Strategic Themes contained within the Corporate Plan 2019-

1. Sustainable Jobs and Tourism
2. Our Environment
3. Community Safety and Cohesion
4. Learning for Life
5. Good Health and Wellbeing
6. High Performing Council



The key performance data for each performance indicator are as follows:

Sustainable Jobs and Tourism

Indicator	Target	Actual Performance
Number of businesses engaged across business support programmes	>429	801
Number of jobs promoted through business start-up activity	85	122
Visitors at strategic tourist attractions	100,000	92,026

Our Environment

Indicator	Target	Actual Performance
Percentage of household waste collected by Council that is sent for recycling	50% by 2020	51.4%
Amount of biodegradable Local Authority Collected Municipal Waste that is landfilled	16,387 tonnes	13,684 tonnes
The amount (tonnage) of Local Authority Collected Municipal Waste arisings	No target set	73,797 tonnes
Average processing time of major planning applications	30 weeks	42.4 weeks
Average processing time of local planning applications	15 weeks	7.6 weeks
Percentage of enforcement cases concluded within 39 weeks	70%	89%
Keep Northern Ireland Beautiful' Cleanliness Index	70%	72%

The final waste figures for 2019/20 will be audited and publicly released by NIEA on the 1st December 2020. They can be used as a strong indicator of performance and are unlikely to change, but cannot be published anywhere in advance of their release by NIEA.

Community Safety and Cohesion

Indicator	Target	Actual Performance
Number of anti-social behaviour incidents	Less than 3,857	3,745
Percentage of people reporting that fear of crime has a minimal impact on their quality of life.	69%	74%

Learning for Life

Indicator	Target	Actual Performance
Number of participants securing employment as a result of employability programmes	50	128
Number of apprenticeships/ work placement/ work experience opportunities delivered by Council	15	37

Good Health and Wellbeing

Indicator	Target	Actual Performance
Employee attendance	13 days or less	10.64 days
Percentage of available Grant Support Scheme funding awarded	100%	104.0%

High Performing Council

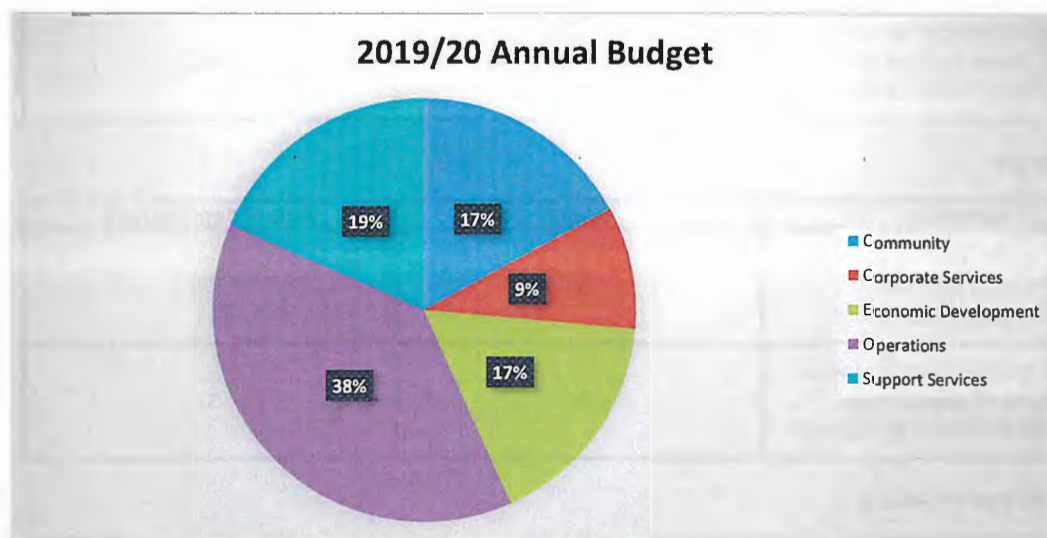
Indicator	Target	Actual Performance
Average escalation rate of complaints	70% of complaints and information requests resolved at informal stage / 20% of complaints resolved at formal internal resolution/ 10% of complaints and information requests requiring formal external resolution	78% of complaints and information requests resolved at informal stage / 16% of complaints resolved at formal internal resolution/ 6% of complaints and information requests requiring formal external resolution
Net cost of council services per head of population	Less than £314	£307

Expenditure and Funding Analysis

The objective of the Expenditure and Funding Analysis is to demonstrate to ratepayers how the funding available to the authority (ie government grants, rates and business rates) for the year has been used in providing services in comparison with those resources consumed or earned by authorities in accordance with generally accepted accounting practices. The Expenditure and Funding Analysis also shows how this expenditure is allocated for decision making purposes between the Council's directorates.

The Council's budget for 2019/20 was £67.8 million, with £48.5 million generated through domestic and non domestic rates. The remaining £19.3m was generated through a combination of grants and other income from Council activities. Income and expenditure accounted for under generally accepted accounting practices is presented more fully in the Comprehensive Income and Expenditure Statement.

Most of the Council's expenditure continues to be centred on Leisure and Recreation Services and Environmental Services.



Capital Investment

Council has worked with the community to deliver capital projects across the Borough and attract the maximum amount of funding to the Borough.

During the year to 31 March 2020, the Council incurred £8.07m of expenditure on capital schemes. The principle areas of Council capital spend in 2019/20 included;

- Blackhead Path;
- Sandy Bay Pavilion;
- Carrick Rangers/Taylor's Avenue;
- Warrant Officers House Carrickfergus;
- Ahoghill Play Park; and
- Kells Playing Fields

Organisational overview and external environment

On 2 May 2019 local council elections were held to elect a new Council for the next 4 years. On 28 May 2019 the newly elected Council adopted a 4 year Corporate Plan for the years 2019-23. The vision of the Corporate Plan is aligned with the "Putting People First" Community Plan 2017 – 32. "Mid and East Antrim will be a strong, vibrant, safe and inclusive community, where people work together to improve the quality of life for all".

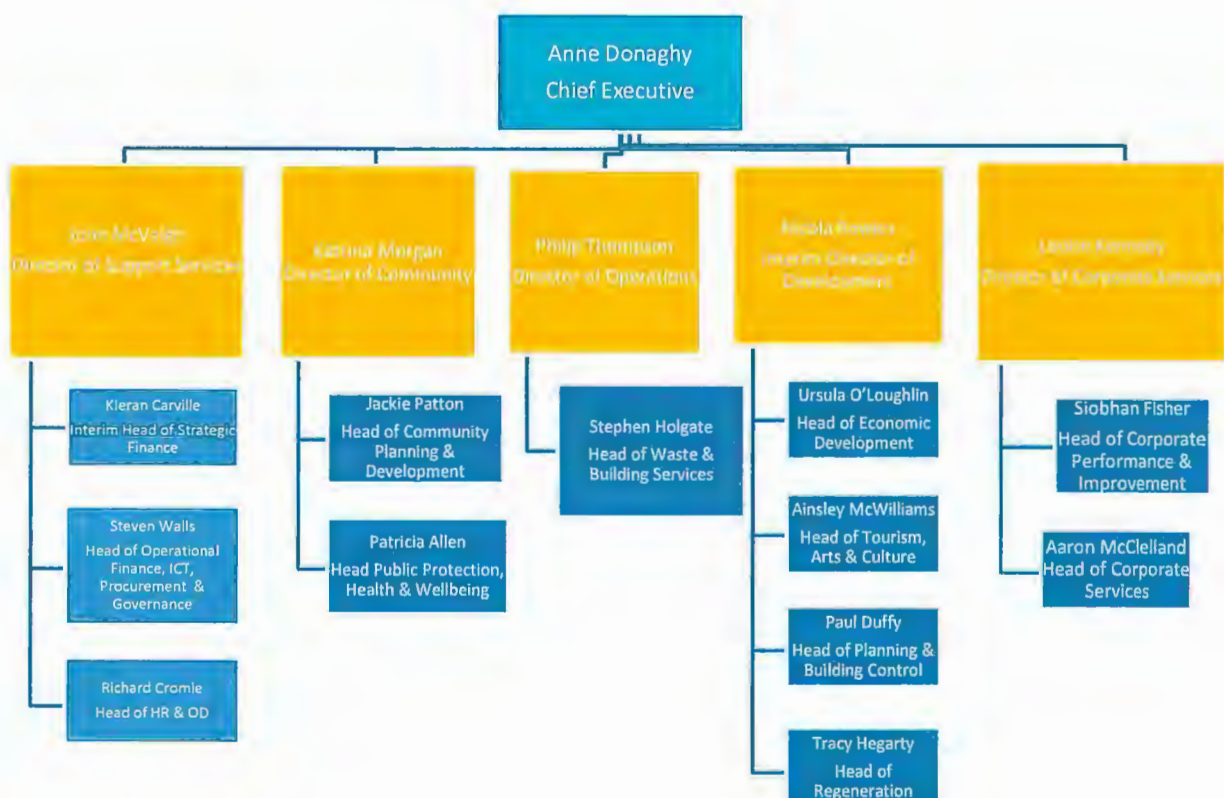
Mid and East Antrim Borough Council has agreed a constitution which sets out how the Council operates, how decisions are made and the procedures which are followed to ensure that these are efficient, transparent and accountable to local people.

The Council has appointed committees to enable it to discharge its functions. These are the Policy and Resources Committee; the Borough Growth Committee; the Direct Services Committee; the Planning Committee; and the Audit and Scrutiny Committee. Mid and East Antrim Borough Council's Committee governance structure is set out below:

Meeting	Members
Full Council	All 40 Elected Members
Audit & Scrutiny Committee	8 Elected Members and 1 Independent Member
Community Planning Committee	20 Elected Members
Economic Growth & Tourism Committee	20 Elected Members
Operational Committee	20 Elected Members
Planning Committee	12 Elected Members
Policy & Resources Committee	20 Elected Members

All Committee Places were allocated to political parties at the Annual General Meeting on a proportional basis using the provisions contained within Schedule 2 of the Local Government Act (Northern Ireland) 2014 (i.e. Quota Greatest Remainder).

The Management structure of the Organisation is as set out in the Mid and East Antrim Borough Council Constitution. The Management structure in 2019/20 is summarised below:



Governance

A full report and analysis of the governance arrangements for the Council is contained within the attached Annual Governance Statement. During the year there were no significant changes or issues around governance.

Operational model

The realignment process the Council approved in 2018/19 where there was a reduction from 13 to 12 Departments and the addition of 1 Directorate came into effect.

Risks and opportunities

Mid and East Antrim Borough Council is committed to managing risk as an organisation, and promotes this for the good of all our stakeholders; the public, employees, Elected Members and partners.

Council has a Risk Management Strategy in place, which requires the identification of both Corporate and Service Risks, assessment of impact and likelihood of those risks and the mitigating controls in place. Council has a Corporate Risk Register in place, which is reviewed by the Senior Management Team on a regular basis and presented annually to Audit and Scrutiny Committee. Council developed a suite of Service Risk Registers, and Project Risk Registers that encapsulates all key risks that have the potential to adversely impact on the delivery of core Council services and projects.

In 2019, Council rolled out the implementation of a new risk management system that created a 'live' risk environment, which allows Senior Management to view the status of risk across the organisation, at corporate, service and project level. It has allowed Council to develop better reporting on risk management, and shares responsibility for controls and actions across teams, due to the collaborative nature of the new risk system. The system is monitored and supported by the Corporate Governance Team.

The Council continues to monitor the manufacturing and electricity production sectors within the local economy which faces significant competition and structural change. The potential negative impact on the wider economy is material as is the loss of non-domestic rates to the Council. The Council is actively engaged with leading organisations in these sectors.

The Council has established clear priorities on economic development, jobs growth and tourism development and is working closely with public agencies and the private sector to develop manufacturing opportunities.

- Supporting local businesses and communities through the Covid-19 pandemic
- Participating in the Belfast Regional City Deal
- Working through the Amplify Integrated Development Strategy
- Developing the former Michelin site and the former St Patricks Barracks
- Progressing the case for a Heathrow Hub site in the borough,
- Progressing a spatial development framework for Glenarm, and
- Developing new tourism initiatives

The United Kingdom left the European Union on 31 January 2020, beginning a transition period that is due to end on 31 December 2020. While the implications of Brexit on local government are uncertain, Council are proactively engaging with government and statutory bodies to best prepare Mid and East Antrim for the challenges and opportunities that lie ahead.

Strategy and resource allocation

The Council's Corporate Plan is underpinned by a number of Council Strategies, including:

- The Medium Term Finance Strategy / Plan
- Treasury Management Strategy
- Business Improvement and Efficiency Strategy
- Digital Transformation Strategy
- Asset Management Strategy
- Community Planning Strategy
- Integrated Economic Development Strategy
- Tourism Strategy
- Car Park Strategy
- "Out to Play" Strategy
- Good Relations Strategy
- Outdoor Recreation Strategy

Basis of preparation

The financial statements are prepared on a going concern basis. There were no material events after the reporting date. There were no material or unusual changes or credits in the accounts in the year. There were no material disposals during the year. The Council has a number of funds in place to address specific contingencies. Management has considered the consequences of COVID 19 and other events and conditions, and it has determined that they do not create a material uncertainty that casts significant doubt upon the entity's ability to continue as a going concern

Statement of the Council's and Chief Financial Officer's Responsibilities for the Statement of Accounts

The Council's Responsibilities

Under Section 1 of the Local Government Finance Act (Northern Ireland) 2011 a council shall make arrangements for the proper administration of its financial affairs. A council shall designate an officer of the council as its Chief Financial Officer and these arrangements shall be carried out under the supervision of its Chief Financial Officer.

Under Regulation 7 of the Local Government (Accounts and Audit) Regulations (Northern Ireland) 2015 the Council, or a Committee, is required by resolution, to approve the accounts.

These accounts were approved by the Chief Executive on 26th August 2020.

The Chief Financial Officer's Responsibilities

Under Regulation 8 of the Local Government (Accounts and Audit) Regulations (Northern Ireland) 2015, the Chief Financial Officer is responsible for the preparation of the Council's Statement of Accounts in the form directed by the Department for Communities.

The accounts must give a true and fair view of the income and expenditure and cash flows for the financial year and the financial position as at the end of the financial year.

In preparing this Statement of Accounts, the Chief Financial Officer is required to:

- observe the Accounts Direction issued by the Department for Communities including compliance with the Code of Practice on Local Authority Accounting in the United Kingdom;
- follow relevant accounting and disclosure requirements and apply suitable accounting policies on a consistent basis, and
- make judgements and estimates that are reasonable and prudent.

The Chief Financial Officer is also required to:

- keep proper accounting records that are up-to-date, and
- take reasonable steps for the prevention and detection of fraud and other irregularities.

ANNUAL GOVERNANCE STATEMENT

Scope of Responsibility

Mid and East Antrim Borough Council ('the Council') is responsible for ensuring that its business is conducted in accordance with the law and proper standards and that public money is safeguarded and properly accounted for, and used economically, efficiently and effectively.

The Council also has a duty under Local Government (Best Value) Act (Northern Ireland) 2002 to make arrangements for continuous improvement in the way in which its functions are exercised, having regard to a combination of economy, efficiency and effectiveness.

In discharging this overall responsibility, the Council is responsible for putting in place proper arrangements for the governance of its affairs, facilitating the effective exercise of its functions, which includes arrangements for the management of risk.

The Council is required to prepare an Annual Governance Statement which is consistent with the principles of the CIPFA/SOLACE Framework Delivering Good Governance in Local Government. This statement explains how Council meets the requirements of Regulation 4 of the Local Government (Accounts and Audit) Regulations (Northern Ireland) 2015 in relation to the publication of a statement on internal control.

The Purpose of the Governance Framework

The governance framework comprises the systems and processes, and culture and values, by which the local government body is directed and controlled and its activities through which it accounts to, engages with and leads its communities. It enables the authority to monitor the achievement of its strategic objectives and to consider whether those objectives have led to the delivery of appropriate, cost-effective services.

The system of internal control is a significant part of that framework and is designed to manage risk to a reasonable level. It cannot eliminate all risk of failure to achieve policies, aims and objectives and can therefore only provide reasonable and not absolute assurance of effectiveness. The system of internal control is based on an ongoing process designed to identify and prioritise the risks to the achievement of the local government body's policies, aims and objectives, to evaluate the likelihood of those risks being realised and the impact should they be realised, and to manage them efficiently, effectively and economically.

The governance framework has been in place at the local authority for the year ended 31 March 2020 and up to the date of approval of the financial statements.

The governance framework

Describe the key elements of the systems and processes that comprise the local authority's governance arrangements including arrangements for:

- **Identifying and communicating the authority's vision of its purpose and intended outcomes for citizens and service users.**

Mid and East Antrim Borough Council agreed its second Corporate Plan 2019-2023 on 28 May 2019. The Corporate Plan is a statement of Council's intent, describing Council's strategic direction over a four year period and was developed to align with the Borough's Community Plan 'Putting People First', adopting the same vision of "Mid and East Antrim will be a strong, vibrant, safe and inclusive community where people work together to improve the quality of life for all".

With new responsibilities and a broader range of powers, combined with a partnership approach, Mid and East Antrim Borough Council will be stronger, more effective and flexible to local need, always being focused on our citizens. Council fully recognise that in the current economic climate it is even more important to make every penny count and account for every penny. That is what our citizens expect and that is what they deserve. Mid and East Antrim Borough Council will focus on being a high performing Council, delivering excellent services and value for money services.

The Corporate Plan will bring together the key priorities of all public service across Mid and East Antrim to ensure that public resources are used to the best effect and in line with citizen need. Council have agreed six strategic themes to deliver its vision. These are:

- 1) Sustainable jobs and tourism;
- 2) Our Environment;
- 3) Community Safety and Cohesion;
- 4) Learning for Life;
- 5) Good Health and Wellbeing;
- 6) High Performing Council.

Council have established seven values, which will allow Council to R.E.A.L.I.S.E its vision.

- | | |
|-----------------------------|-------------------------|
| • Respect | • Integrity |
| • Excellence | • Service innovation |
| • A teamwork approach | • Equality and fairness |
| • Leadership and commitment | |

The current Corporate Plan 2019-2023 was the result of a series of activities that took place over 15 months and regular updates were provided to Council throughout the process.

To develop the Corporate Plan, Mid and East Antrim Borough Council took the following approach:

- A desktop review of the key Themes emerging from the Community Plan.
- In January, September and December 2018, Elected Members and Senior Management engaged in workshops to develop Plan content.
- A Household Survey was conducted across the Borough during September 2018. A representative sample of residents completed face-to-face interviews which addressed resident satisfaction and established residents' priorities for Council.
- In October 2018, responses were received from residents, community groups and local businesses via Council's Connections magazine/online survey which invited them to have their say on our proposed vision, themes and priorities.
- In August, September and November 2018, Council staff participated in workshops to develop the new strategic themes and key performance indicators.
- Between the 17th January and 19th March 2019, an 8-week public consultation was held on a Consultation Document for both the new Corporate Plan 2019-2023 and the Performance Improvement Plan for 2019/20.
- The Corporate Plan 2019-2023 was Equality and Rural-proofed.

- **Reviewing local authority's vision and its implications for Council's governance arrangements**

Council monitor and review the Corporate Plan on a six monthly basis, reporting on progress achieved in relation to delivery of its six strategic themes and their associated objectives.

Each of the six monthly Corporate Plan progress reports were reported to Full Council for scrutiny and approval in July 2019 and December 2019.

- **Measuring the quality of services for users through the Citizen Satisfaction Survey, for ensuring they are delivered in accordance with Council's objectives and for ensuring that they represent the best use of resources.**

One of the key strategic themes contained within the Council's Corporate Plan is that of being a "High Performing Council". An objective under this strategic theme is to "be recognised as a leading council, delivering excellent services and facilities through collaborative working, innovation and continuous improvement".

The measurement of quality of service for users is undertaken in the form of Directorate and Departmental Business Plans, which are submitted to the relevant Council Committees for noting. Directorate Business Plans are monitored and scrutinised by Audit and Scrutiny Committee in terms of performance. During 2019/20 Council developed Directorate and Departmental Business Plans, which are based on delivering efficient, effective and value for money services, in line with customer need.

Directorate and Departmental Business Plans including performance indicators demonstrate clear linkage to the Corporate Plan. The Business Plans and performance indicators were reviewed annually and monitored by the Chief Executive, Directors and Heads of Service.

As part of the development of Council's Community Plan, considerable community consultation has taken place in relation to the Quality of Life Indicators. Mid and East Antrim Borough Council uses data from NISRA to gauge the importance of each of these indicators.

Council undertook a Waste Recycling Customer Satisfaction Survey in February 2020, with 1511 respondents. 77% of respondents were satisfied with their black waste collection service, and 78% of respondents were satisfied with green garden and food waste bins collection service.

The satisfaction with Mid and East Antrim Borough Council household recycling centres was 71.65%. Whilst Council acknowledges that there is room for improvement across waste recycling, these figures are indicative of the work undertaken to date to improve the delivery of waste management services across the Borough.

The data from the survey will be used to inform business planning and improvements to service delivery within Waste Services.

Council financial performance is assessed through regular budget meetings and is reported to Council periodically. Value for money auditing is also considered by both Internal and External Audit when conducting their programme of reviews.

- **Defining and documenting the roles and responsibilities of the executive, non-executive, scrutiny and officer functions, with clear delegation arrangements and protocols for effective communication.**

The Council fulfils its function by way of Full Council meetings and five standing Committees. Committee places are allocated proportionately to political parties using the quota greatest remainder method as prescribed by the Local Government Act. All Council and Committee decisions are recorded, minuted and available for public inspection.

The roles, responsibilities and order for the governance of Council is contained within Council's Constitution (last revised June 2020) and Standing Orders (last revised June 2020). All Councillors and Directors are issued with a copy of the Council's Standing Orders. Council have established a Scheme of Delegation (last reviewed June 2020), which details the decision making powers delegated by Full Council to Committees and Senior Officers. Council also has a range of other procedures and protocols in place to ensure roles are adequately defined, for example, Protocol for the operation of the Planning Committee, Protocol for the establishment of Working Groups, etc.

The Chief Executive is the head of the paid officers of Council. She is responsible and accountable to the Council for all aspects of Council functions including Finance and Human Resources.

- **Developing, communicating and embedding codes of conduct, defining the standards of behaviour for members and staff.**

The Local Government Act (Northern Ireland) 2014 introduced an ethical standards framework for local government. A key element of the ethical standards framework was the introduction of a mandatory Northern Ireland Local Government Code of Conduct for Councillors, which imposes a requirement for Councillors to observe the Code and establishes mechanisms for the investigation and adjudication of written complaints that a Councillor has failed, or may have failed, to comply with the Code.

A number of policies and guidance documents have been established for Members to provide clarity on their roles in light of the Code of Conduct.

The Council has adopted the Local Government Staff Commission Code of Conduct for Local Government employees and this was circulated to all officers.

Council have embedded a number of specific policies across the organisation, as guided by the employees Code of Conduct, including policies on dignity and respect, equality and gifts and hospitality.

- **reviewing the effectiveness of the authority's decision-making framework, including delegation arrangements, decision making in partnerships and robustness of data quality**

Mid and East Antrim Borough Council has an agreed Constitution which sets out how the Council operates, how decisions are made and the procedures which are followed to ensure that these are efficient, transparent and accountable to local people. Some of these processes are required by the law, while others are a matter for the Council to choose.

In conjunction with the Constitution, Council operates a Scheme of Delegation which provides the framework and guidance for the powers delegated by Full Council to Committees of Council, and to senior officers within Council. Council has the power to delegate certain decision-making under Section 7 of the Local Government Act (Northern Ireland) 2014.

Council's Constitution and Scheme of Delegation are reviewed annually by Council.

Following the completion of the General Data Protection Regulation Compliance Project, Council introduced an Information Governance policy as the overarching information governance framework for the organisation, constituted the Information Governance Steering Group and appointed a Data Protection Officer. In 2018, Council's internal auditor conducted a review on its Information Governance performance which determined there was a satisfactory assurance regarding the effective and efficient achievement of the Council's objectives. Council has fully implemented and reported on the audit recommendations in 2020. The Council's Access to Information Policy has been reviewed as part of the Council's biennial review of internal policies. An updated policy has been approved by the Policy and Resources Committee in September 2020.

- **reviewing the effectiveness of the framework for identifying and managing risks and demonstrating clear accountability**

Mid and East Antrim Borough Council is committed to managing risk as an organisation, and promotes this for the good of all our stakeholders; the public, employees, Elected Members and partners.

Council believes that the control of risk is an inherent function of management and demonstrates this by aligning risk ownership with Council's management structure. Council's Senior Management Team and Operational Management Team are responsible for achieving Mid and East Antrim Borough Council objectives, and alongside these sits the responsibility for managing the risks associated with each objective.

Council has a Risk Management Strategy in place, which requires the identification of both Corporate and Service Risks, assessment of impact and likelihood of those risks and the mitigating controls in place. Council has a Corporate Risk Register in place which is reviewed by the Senior Management Team on a regular basis and presented annually to Audit and Scrutiny Committee. Council developed a suite of Service Risk Registers, and Project Risk Registers that encapsulates all key risks that have the potential to adversely impact on the delivery of core Council services and projects.

In 2019 Council rolled out the implementation of a new risk management system that created a 'live' risk environment which allows Senior Management to view the status of risk across the organisation, at corporate, service and project level. It has allowed Council to develop better reporting on risk management, and shares responsibility for controls and actions across teams, due to the collaborative nature of the new risk system. The system is monitored and supported by the Corporate Governance Team.

- **ensuring effective counter-fraud and anti-corruption arrangements are developed and maintained**

Council has a Fraud Policy (last reviewed November 2017) in place, which was circulated to all staff and Elected Members. The Fraud Policy is also published on Council's website.

Council's Fraud Policy was not activated in 2019/20. Any incident reported is addressed under the Fraud Policy and Fraud Response Plan and fully investigated. The Audit and Scrutiny Committee are updated in relation to all fraudulent acts following the conclusion of an investigation.

- **ensuring effective management of change and transformation**

Council has developed a Digital Transformation Strategy which, over a 3-year period, will support the identification, scoping and delivery of a significant number of new systems which will see delivery of Council services moved progressively onto a digital platform. The costs of the Strategy are supported through a Transformation Fund created by Council and the Capital Plan. The overall Transformation Programme is led by and reported on by the Director of Corporate Services and Head of Digital Innovation and Procurement through the agreed governance arrangements to SMT, and Audit and Scrutiny Committee on a regular basis. Projects covered by the strategy are identified by the Operational Management Team.

To support business transformation a Service Review Framework was approved and implemented during 2018. This framework is premised on the core transformation principles of customer-focused, value for money, effectiveness and efficiency, excellence, innovation and a forward-looking organisation.

Digital Transformation delivers opportunities to work smarter while gaining necessary insight to support evidence-based decision-making. Digital innovation supports the delivery of Council's Business Improvement and Efficiency Strategy which features an initiative to create a foundation of reliable, resilient and secure ICT infrastructure and services; providing confidence in the adoption of new technologies.

Governance arrangements are in place for the Transformation Programme, including:

- On-going oversight and scrutiny by SMT and the Audit and Scrutiny Committee through the provision of regular reports; and
- Bi-annual progress reports to Council.

The current Covid-19 pandemic has significantly changed how Council operates with more services requiring the use of digital technology to be delivered remotely. Council has been required to be agile and respond quickly to changing circumstances. Investment in Digital Transformation over recent years has meant that Council was well positioned to adapt service delivery to meet the needs of our stakeholders in a challenging emergency period. Many services are now being delivered virtually, for example, Planning, Building Control, Economic Development and many others with a large proportion of staff working remotely.

Further projects are planned for 2020/21 under the Digital Transformation Strategy and more will likely be identified as Council continues to transform.

- **ensuring the authority's financial management arrangements conform with the governance requirements of the CIPFA Statement on the Role of the Chief Financial Officer in Local Government (2010) and, where they do not, explain why and how they deliver the same impact**

The Chief Executive is also the Council's Chief Financial Officer, as outlined in Section 1 of the Local Government Finance Act (Northern Ireland) 2011. The Chief Financial Officer is charged with ensuring the lawfulness and financial prudence of decision-making, providing advice and guidance and ensuring that expenditure incurred was lawful.

Principle 5 of the CIPFA Statement on the Role of the Chief Financial Officer in Local Government (2010) as set out in the application note to Delivering Good Governance in Local Government Framework states that "The CFO in a local authority must be professionally qualified and suitably experienced". The Council's financial management arrangements do not comply with Principle 5 in this regard as the Council's designated Chief Financial Officer is not a professionally qualified accountant, and the role of the Chief Financial Officer and Chief Executive are not separate within the Council.

The arrangements in place are not considered to compromise the Council's financial management arrangements in any way as the Chief Financial Officer is supported by Council's Finance Department which has fully qualified accountants, ensuring that the decisions made by the Chief Financial Officer are based on sound technical knowledge and understanding. This arrangement complies with the current legislation in Northern Ireland - section 1 (2) of the Local Government Finance Act (Northern Ireland) 2011.

- **ensuring compliance with relevant laws and regulations, internal policies and procedures, and that expenditure is lawful.**

The Chief Executive is also the Council's Chief Financial Officer, as outlined in Section 1 of the Local Government Finance Act (Northern Ireland) 2011. The Chief Financial Officer is charged with ensuring the lawfulness and financial prudence of decision-making, providing advice and guidance and ensuring that expenditure incurred was lawful.

Financial regulations are contained in the Council's Finance Policy Manual. This has been approved by Council. They are made available to all staff through publication on Council's internal computer network drive and are updated and maintained within the Finance Department. Business Cases and Economic Appraisals are scrutinised by Senior Management and Council to ensure value for money proposals are implemented and decisions are taken in line with Council's Scheme of Delegation.

Council's corporate Health and Safety Committee comprising management and Trade Unions is well established, successfully addressing matters of policy and procedures to ensure compliance as well as monitoring the health and safety risk management arrangements within the organisation.

Two Members of the Audit and Scrutiny Committee, usually the Chair and the Vice-Chair of the Committee, attend the review of Council purchase ledger transactions, payroll transactions and treasury management transactions prior to each monthly meeting. The purpose of this activity is to allow payment to be recommended to the Full Council at the monthly meeting. Council retain the service of a solicitor for any legal guidance.

The internal audit function is outsourced and provides an independent opinion on compliance issues. Council's internal audit service provider was appointed in April 2019 for a period of four years until March 2023.

Council has a Fraud Policy (last reviewed in November 2017) in place, which was circulated to all staff and Elected Members. The Fraud Policy is also published on Council's website.

Council have adopted an Environmental Policy and have established environmental objectives.

Environmental compliance is supported through an accredited ISO 14001: quality system, achieved in February 2020.

An annual management review takes place involving members of the Senior Management Team and an internal team of officers meet quarterly to ensure environmental compliance is maintained and progressed. The annual environmental performance report is reported to Council and is published online.

- **ensuring the authority's assurance arrangements conform with the governance requirements of the CIPFA Statement on the Role of the Head of Internal Audit (2010) and, where they do not, explain why and how they deliver the same impact**

The Council's internal audit arrangements complies with the CIPFA Statement on the Role of Head of Internal Audit (2010). The Council has not designated a Head of Internal Audit within its staffing structure. However, it has appointed an external firm of suitably qualified and experienced accountants and auditors to provide a full range of internal audit services to Council.

The arrangements in place are not considered to compromise the Council's internal arrangements in any way as the externally sourced internal audit service provider has a Head of Internal Audit who reports directly to Council through the Chief Executive. The external Head of Internal Audit is a fully qualified accountant, ensuring that the internal audit service is based on sound technical knowledge and understanding. This arrangement complies with the CIPFA Statement on the Role of the Head of Internal Audit (2010).

- **ensuring effective arrangements are in place for the discharge of the monitoring officer function**

Under the Fair Employment and Treatment (NI) Order 1998 and Fair Employment (Monitoring) Regulations (NI) 1999 as amended, the Council has a legal duty requirement to:

1. Monitor workforce composition;
2. Review composition and recruitment, training and promotion (at least once every three weeks);
3. To take affirmative action if fair participation is not being secured for members of the Protestant and Roman Catholic communities; and
4. To set goals and timetables as part of affirmative action.

To comply with this legislation, the Monitoring Officer completes an Annual Monitoring Return to the Equality Commission for Northern Ireland and conducts an Article 55 Review at least every three years.

- **ensuring effective arrangements are in place for the discharge of the head of paid service function**

The Chief Executive is also the Council's Head of Paid Service. She is the main link between Council Members and Officers promoting positive and open communications between Members and Officers and ensuring strategic priorities are implemented in an appropriate and accountable manner.

The Head of Human Resources and Organisational Development and all staff within his staffing structures advise and assist the Chief Executive in the discharge of this role, including all employment policy and practice matters, organisational development for the Council's workforce and industrial relations. The Head of Human Resources and Organisational Development and his staff are appropriately qualified and experienced.

- **undertaking the core functions of an audit committee, as identified in CIPFA's Audit Committees: Practical Guidance for Local Authorities**

Council's Audit and Scrutiny Committee undertakes the core functions of an Audit Committee as identified in CIPFA's Audit Committee Practical Guidance for Local Authorities.

The Audit and Scrutiny Committee met 5 times during 2019/20 in conjunction with key audit and financial reporting frameworks. The Audit and Scrutiny Committee has an established Terms of Reference (last reviewed June 2019).

Internal audit findings and risk management information were reported to the Committee during the year and other information, such as, the work of the Northern Ireland Audit Office.

Council undertook a recruitment exercise to appoint a new Independent Member to the Audit and Scrutiny Committee during 2019. This recruitment exercise proved unsuccessful and the position was re-advertised during early 2020 which proved successful and the Independent Member took up his post September 2020.

The Audit and Scrutiny Committee reviewed its performance in August 2020 using the self-assessment checklist contained within the Audit Committees: Practical Guidance for Local Authorities and Police (2013 Edition).

- **whistleblowing and for receiving and investigating complaints from the public**

Council have a Whistleblowing Policy (last reviewed November 2017) in place. This policy was circulated to all staff and Elected Members. The Whistleblowing Policy is also published on Council's website.

Council's Whistleblowing Policy was activated once during 2019/20. The Whistleblowing allegation was fully investigated and closed out.

Council has established a corporate Complaints Policy and recording system which is maintained by the Policy Team. The Complaints Policy ensures that all formal public complaints are appropriately investigated and responded to. Council received 34 formal complaints during 2019/20. Of the 34 formal complaints received 6 reached Stage 2 of Council's Complaints Policy with 2 being referred to the Northern Ireland Public Service Ombudsman and 0 to the Equality Commission for Northern Ireland.

- **identifying the development needs of members and senior officers in relation to their strategic roles, supported by appropriate training**

A training needs analysis has been carried out for all Elected Members. Members have undertaken a diverse range of training activities in order to provide them with the capacity and capability to fulfil their role efficiently and effectively. Some of the training provided to Members has covered the key areas of:

- Community Planning;
- Planning;
- Declaration of Interest;
- Standing Orders;
- Audit and Scrutiny;
- Good Relations and Equality;
- Chairing Committees;
- Code of Conduct; and
- The Prudential Code of Accounting.

Through the Elected Member Development Charter Steering Group, Elected Members are progressing towards the achievement of Elected Member Development Charter. Council are also developing a training programme through the steering group which will focus on the specific requirements of Councillors.

A Leadership and Development Programme to build leadership capacity and support succession planning across senior management at SMT/OMT was delivered by the Institute of Directors (IoD).

A Staff Training Needs Analysis is undertaken as part of the annual personal development plan process. Training will then be organised as per the identified training plans.

- **establishing clear channels of communication with all sections of the community and other stakeholders, ensuring accountability and encouraging open consultation**

Strong communication remains critically important to ensuring the Mid and East Antrim community, visitors, would-be investors, key partners and other stakeholders are fully aware of Council's strategic aims and objectives. Council uses a wide range of media platforms to communicate within and outside the Borough, including but not limited to, the Council website, corporate publications, brochures and leaflets, social media (Facebook, Twitter, Instagram, LinkedIn), and traditional media, through advisements, broadcasts and PR.

Council's corporate Facebook account has retained its position as a top-performing account across all Northern Ireland Councils. Followers continue to grow rapidly on both Facebook and Twitter with an impressive increase in website users as more and more citizens use these platforms to engage and interact with Council. Digital media has been embraced by Council as a vital tool for sharing the very latest information and updates from Council and its partners.

Council's Strategic Communications Action Plan, introduced last year, continues to deliver cost efficiencies, maximisation of resource, and the strategic delivery of Council's Communications function, in line with the objectives set out in the Corporate and Community Plans.

Council is committed to ensuring an increasing volume of documents and online content are produced and made available in accessible formats, such as large print or audio cassette, and in minority languages as we work to ensure equality and promote diversity in our Borough.

In producing Council's Performance Improvement Plan for 2019/20, Officers undertook a wide-ranging consultation process, alongside the consultation for the new corporate plan, with Council staff, Elected Members and the general public. The consultation process ran for an eight-week period and included public consultation events in Ballymena, Larne, and Carrickfergus.

Council is now at an advanced stage in preparing a Local Development Plan Strategy for the Borough. The main purpose of the Local Development Plan is to inform the general public, statutory authorities, service providers and developers of the policy framework and land use proposals that will guide future development decisions in the Borough.

The Council published its Statement of Community Involvement and Local Development Plan Timetable in August 2016. The council monitor and review the timetable on a regular basis and update if necessary. The Timetable and Statement of Community Involvement was reviewed in September 2020 to take account of any implications of Covid-19. Updated versions have now been approved by Full Council and agreed by the Department for Infrastructure and the revised documents issued in December and are available on the Council's website. The first part of the Local Development Plan, the Preferred Options paper was published in June 2017 for a 12 week public consultation period. The draft Plan Strategy was published in September 2019. Again this was subject to public consultation, which ended in March 2020. The draft Plan Strategy will be submitted to the Planning Appeals Commission by the end of the year for Independent Examination. The Independent Examination will test the soundness of the Plan. Once formally adopted, work can commence on the second stage, the Local Policies Plan.

Through the function of Community Planning, Council has continued to actively consult with a wide range of community and voluntary groups, networks and clusters that make up the Borough's community and voluntary sector.

As part of the development and establishment of the community planning partnership structure (which is enshrined within the Council's own "Community Planning Guide" the governance framework), Council established a Community Panel, in consultation with and by agreement of the community.

The community panel, which is representative of the Third Sector in our Borough, puts community at the heart of our community planning partnership and is central to the decision making processes. It provides the community with a formalised channel to feed in, directly to the partnership, the needs and concerns of the wider community.

The members of the Community Panel then agree representation to sit on other elements of the wider partnership including the Community Planning Strategic Alliance, which includes Council representatives and key decision makers from across the wider public sector and statutory agencies.

Throughout 2019/20 Council have continued to lead the Community Planning process in partnership with a wide range of community, voluntary and statutory partners. Consultation has taken place in many forms and has resulted in the progression of many key projects, for example:

- The Autism Friendly Project has involved
- The extension of the contract for Ageing Well Services.

Council continues to utilise all media and social media platforms and opportunities to communicate the work of the Community Planning Partnership.

- **enhancing the accountability for service delivery and effectiveness of other public service providers**

In 2019/20 Council produced its first Statement of Progress for submission to the Department for Communities. The statement gave an overview of all progress of community planning activity. Council led on the process of producing the statement which involved the input of all partners. The Statement was formally published and there was widespread promotion of good news stories across all media channels.

The publishing of the statement and formal reporting to the Department for Communities ensures accountability to all our key partners and to our residents.

In line with the Community Planning Guide the Strategic Alliance continues to meet bi-annually and Council as lead partner reports on progress regularly to all statutory partners.

- **incorporating good governance arrangements in respect of partnerships and other joint working as identified by the Audit Commission's report on the governance of partnerships, and reflecting these in the authority's overall governance arrangements.**

Council has not entered into any new partnerships in 2019/20. Going forward, the Council will review the Northern Ireland Audit Office publication "Making Partnerships Work - A Good Practice Guide for Public Bodies" published in April 2019 and will apply any relevant governance best practice.

Review of Effectiveness

The authority has responsibility for conducting, at least annually, a review of the effectiveness of its system of internal control. The review of effectiveness is informed by the work of the executive managers within Council who have responsibility for the development and maintenance of the governance environment, the Internal Audit's annual report, and also by comments made by the external auditors.

The process that has been applied in maintaining and reviewing the effectiveness of the governance framework:-

- **The Authority**

A committee structure is in place within Council which provides Elected Members with a democratic mechanism by which to approve and scrutinise Council business. Positions of responsibility are appointed by d'Hondt. All committee places are appointed through the Quota Greatest Remainder method. Both are set out within the Local Government Act (NI) 2014.

Council business is governed by Council Standing Orders and Committee Terms of Reference to ensure that the transaction of the business of Council and its Committees is properly regulated and conducted in an efficient, fair and legal manner.

- **The Executive**

The Chief Executive leads the Council's Senior Management Team to collectively have involvement in and oversight of the processes involved in maintaining and reviewing the effectiveness of the governance framework.

In doing so the Senior Management Team regularly review:

- Full Council and Committee Actions;
- Corporate Risk Register;
- Corporate Health and Safety;
- Internal and External Audit Reports;
- New and revised Council Policies;
- Performance Improvement Plan;
- Council performance against the priorities set within the Corporate Plan;
- Economic Appraisals/ Business Cases;
- Procurement Actions;
- Human Resource Permissions;
- Financial Reporting;
- Prudential Code of Accounting.

- **The Audit Committee / Overview and Scrutiny Committees / Risk Management Committee**

The Audit and Scrutiny Committee met 5 times during 2019/20. The Audit and Scrutiny Committee is currently in the process of recruiting a new Independent Member. The internal and external auditors attend meetings as appropriate. The Audit and Scrutiny Committee approved a risk based internal audit plan for 2019/20 and considered the findings of internal audit reviews and the external audit reports (Annual Audit Letter and Report to Those Charged with Governance).

The Audit and Scrutiny Committee reviews the Internal Audit function on an annual basis and through the Internal Audit Assurance Statement provided by the Internal Auditor ensured that its internal controls, risk management and governance are adequate and effective and that it has a sound system of internal control.

The effectiveness of the Audit and Scrutiny Committee was reviewed at the Audit and Scrutiny Committee of 18 August 2020. This was done using the self-assessment checklist in the Audit Committees: Practical Guidance for Local Authorities and Police (2013 Edition). The Committee will also review the implementation of recommendations contained in both internal and external audit reports. The delay in self-assessment and audit recommendation review was as a result of Covid-19's impact on Committee's schedule.

- **Internal audit**

Council's internal audit function is externally sourced and provides an independent opinion on the Council's Governance Framework.

An annual review of the internal audit function has been carried out in accordance with the recommended checklist provided in the CIPFA Local Government Application Note for the UK Public Sector Internal Audit Standards (PSIAS), 2013. This review was presented to the Audit and Scrutiny Committee on 18 August 2020, along with the Annual Internal Audit Assurance Report. Internal Audit reported compliance with the PSIAS and provided Council with a satisfactory audit assurance statement.

Internal Audit carried out 8 Assurance reviews in 2019/20, with all 8 reviews attaining a Satisfactory Assurance Rating.

Based on the conclusions of the 2019/20 Internal Audit Programme, Internal Audit have provided the Council's Chief Financial Officer with an overall assurance rating of 'Satisfactory' in relation to the Council's system of internal control.

We have been advised on the implications of the result of the review of the effectiveness of the governance framework by the Audit and Scrutiny Committee, and a plan to address weaknesses, and ensure continuous improvement of the system is in place.

- **Other explicit review/assurance mechanisms**

Council reviewed its Corporate Risk Register during 2019/20. Actions for each Corporate Risk have been formulated in terms of likelihood and impact.

External audit by the Northern Ireland Audit Office during the last year, gave Council an unqualified audit opinion in relation to their accounts for 2018/19.

Council's Performance Improvement Plan has been externally audited by the Northern Ireland Audit Office who provided a satisfactory assurance rating for 2019/20.

Parks and Open Spaces won numerous awards in 2019/20 including:

- APSE Best Service Team Award for Parks, Grounds and Horticultural Services
- Britain in Bloom Award – Gold award, Cullybackey
- 5 Ulster in Bloom Awards – Floral Stations Award, Best Village Award: Best Large Village Award, Best Small Town Award, and Best Large Town/Small City Award
- 3 Best Kept Awards – 1st & 2nd Large Village Award, 'Best of the Best' Award
- 8 Green Flag Awards (over 10 sites)
- 3 Seaside Awards
- Chaines Wood Ballygally officially designated a Local Nature Reserve

Carrickfergus Marina has retained the 5 Gold Star Anchor Award, and its Blue Flag Marina Award.

The following sites retained their Tourism NI Grading's:

- Larne Museum & Arts Centre (4*)
- Carrickfergus Museum (4*)
- Arthur Cottage and Interpretative Centre (4*)
- Andrew Jackson Cottage and US Rangers Centre (4*)
- The Gobbins (4*)

Mid-Antrim Museum and Carrickfergus Museum both achieved Museum Accreditations in 2019.

Council also won two prestigious Communication Awards in 2019:

CIPR – In-House Public Sector Communications Team of the Year
MJ Awards – Innovation in Communications UK Award

Significant Governance Issues

Independent Member of the Audit and Scrutiny Committee

Council undertook a recruitment exercise to appoint a new Independent Member to the Audit and Scrutiny Committee during 2019. This recruitment exercise proved unsuccessful and the position was readvertised during early 2020 which proved successful with the Independent member taking up post September 2020

Covid-19 Pandemic

Following the onset of the Covid-19 pandemic and the subsequent government lockdown in March 2020, has led to a significant impact on Council service delivery and income streams. Council activated its emergency plan in March 2020 and proactively availed of the Government furlough scheme in order to alleviate the immediate financial pressures associated with service and facility closure. Council will proactively analyse the long-term impacts of the Covid-19 pandemic and effectively plan, in conjunction with Departmental and Government advice.

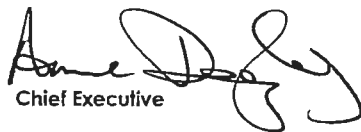
We propose over the coming year to take steps to address the above matters to further enhance our governance arrangements. We are satisfied that these steps will address the need for improvements that were identified in our review of effectiveness and will monitor their implementation and operation as part of our next annual review.

Signed



Chair of Audit and Scrutiny Committee

Signed



Chief Executive

REMUNERATION REPORT FOR THE YEAR ENDED 31 MARCH 2020

INTRODUCTION

The Local Government (Accounts and Audit) Regulations (Northern Ireland) 2015 require larger local government bodies to prepare a remuneration report as part of the statement of accounts.

ALLOWANCE AND REMUNERATION ARRANGEMENTS

COUNCILLORS

Allowances are payable by councils to councillors and committee members under Part 3 of the Local Government Finance Act (Northern Ireland) 2011 and The Local Government (Payments to Councillors) Regulations (Northern Ireland) 2012, which came into operation on 1 April 2012.

Guidance and determinations on Councillors' Allowances applicable from 1 April 2019 were issued by the Department for Communities on 6 March 2019 (Circular LG 07/2019). Details of the allowances paid to individual councillors are published on council websites.

Following local elections on 2 May 2019, 462 councillors were elected to the 11 new councils for a four year term. Mid and East Antrim Borough Council had 57 councillors in 2019/20.

SENIOR EMPLOYEES

The remuneration of senior employees employed by the Council is determined by the Council in line with that determined by the National Joint Council (NJC) for Local Government Services. Senior staff are those staff who are members of the Executive Management Team/Senior Management Team.

Council appointments of employees are made in accordance with the Local Government Staff Commissions' Code of Procedures on Recruitment and Selection, which requires appointment to be on merit and on the basis of fair and open competition.

Unless otherwise stated below, the officials covered by this report hold appointments which are open-ended.

ALLOWANCES PAID TO COUNCILLORS

The total amount paid to Councillors by way of allowances, under Part 3 of the Local Government Finance Act (Northern Ireland) 2011 and the Local Government (Payments to Councillors) Regulations (Northern Ireland) 2012 was:

Table 1: Total Allowances paid to councillors (audited information)

Allowance	2019/20		2018/19	
	Total Allowances £	Number of Councillors receiving the Allowance	Total Allowances £	Number of Councillors receiving the Allowance
Basic Allowance	602,761	57	588,021	41
Special Responsibility Allowance	53,103	24	55,632	19
Chairperson/Deputy Mayor Allowance	11,180	2	7,417	2
Vice Chairperson/ Deputy Mayor Allowance	7,738	2	6,181	1
Mileage Allowance	35,675	43	46,355	35
Public Transport and Other Travel Incidentals	6,894	24	5,722	21
Subsistence	2,864	10	5,335	17
Courses/ Conferences Visits (registration & joining fees)	4,930	13	2,631	34
Dependents' Carers Allowance	601	1	1,418	1
TOTAL ALLOWANCES	725,746		718,712	

Details of the allowances paid to individual councillors in 2019/20 are published on the council website at www.midandeantrim.gov.uk/council/policies-and-documents/payments-to-councillors-scheme.

REMUNERATION OF SENIOR EMPLOYEES

The remuneration of senior employees covers the Executive Management Team/Senior Management Team. The following table provides details of the remuneration paid to senior employees:

Table 2 - Table 2: Remuneration (Including salary)(audited information)

Officers	2019/20				2018/19			
	Salary (Full year equivalent in brackets where applicable) £'000	Bonus Payments £'000	Benefits in kind (to nearest £100) £'000	Total £'000	Salary (Full year equivalent in brackets where applicable) £'000	Bonus Payments £'000	Benefits in kind (to nearest £100) £'000	Total £'000
Anne Donaghy (Chief Executive)	115-120	0	0	115-120	110-115	0	0	110-115
Philip Thompson (Director of Operations)	85-90	0	0	85-90	80-85	0	0	80-85
Linda Williams (Director of Economic Development) (a)	85-90	0	0	85-90	80-85	0	0	80-85
Katrina Morgan (Director of Community)	80-85	0	0	80-85	55-60 (75-80)	0	0	55-60 (75-80)
John McVeigh (Director of Support Services)	80-85	0	0	80-85	50-55 (75-80)	0	0	50-55 (75-80)
Louise Kennedy (Director of Corporate Services) (b)	75-80 (80-85)	0	0	75-80 (80-85)	0	0	0	0
Nicola Rowles (Director of Development) (c)	45-50 (55-60)	0	0	45-50 (55-60)	0	0	0	0

(a) Linda Williams ceased employment with Council on 24th March 2020.

(b) Louise Kennedy was promoted to a Director on 1st June 2019.

(c) Nicola Rowles was promoted to a Director on 1st July 2019.

Councils are required to disclose the relationship between the remuneration of the highest paid member of the Executive Management Team/Senior Management Team and the median remuneration of the Councils workforce.

The banded remuneration of the highest paid member of the Executive Management Team/Senior Management Team in the financial year 2019/20 was £115k - £120k. This was 4.05 times the median remuneration of the workforce, which was £28.8k.

Table 3: Relationship between the remuneration of the highest paid member of the Executive Management Team/Senior Management Team and the median remuneration of the Councils workforce (audited information)

	2019/20	2018/19
Salary Band of Highest Paid member of the	115-120	110-115
Median Total Remuneration	£28.8k	£27.5k
Ratio	4.05:1	4.16:1

In 2019/20, no employees received remuneration in excess of the highest paid member of the Executive Management Team/Senior Management Team.

Total remuneration includes salary, bonus payments and benefits in kind.

Salary

"Salary" includes gross salary, overtime, and any gratia payments.

Bonus Payments

Bonus payments are based on performance levels attained and are made as part of the appraisal process. Bonuses relate to the performance in the year in which they become payable to the individual. The bonuses reported in 2019/20 relate to performance in 2019/20.

Benefits in Kind

The monetary value of benefits in kind covers any benefits provided by the employer and treated by HM Revenue and Customs as a taxable emolument.

Exit Packages for staff

The number of exit packages provided to all staff by the Council, together with total cost per band and total cost of the compulsory and other redundancies are set out in the table below:

Table 4: Exit Packages in 2019/20 (audited information)

Severance Package Cost Band	2019/20				2018/19			
	Number of Compulsory Redundancies	Number of Other departures agreed	Total Number of Exit Packages in each Cost Band	Total Cost of Packages in each Cost Band £'000	Number of Compulsory Redundancies	Number of Other departures agreed	Total Number of Exit Packages in each Cost Band	Total Cost of Packages in each Cost Band £'000
£0 - £20,000	0	0	0	0	0	1	1	17
£20,001 - £40,000	0	0	0	0	0	1	1	37
£40,001 - £60,000	0	1	1	46	0	1	1	51
£60,001 - £80,000	0	2	0	137	0	0	0	0
£80,001 - £100,000	0	1	1	96	0	0	0	0
£100,001 - £150,000	0	0	0	0	0	2	2	250
£150,001 - £200,000	0	2	0	348	0	2	2	359
£200,001 - £250,000	0	0	0	0	0	1	1	236
Total	0	6	2	627	0	8	8	950

Pension Benefits

The Local Government Pension Scheme (Northern Ireland) (the Scheme) which is a funded defined benefit pension scheme, which provides retirement benefits for council employees on a "career average revalued earnings" basis from 1 April 2015. Prior to that date benefits were built up on a "final salary" basis.

From 1 April 2015, a member builds up retirement pension at the rate of 1/49th pensionable pay for each year. Pension benefits in relation to membership between 1 April 2009 and 31 March 2015 were built up at the rate of 1/60th pensionable pay for each year of membership. There is no automatic lump sum provided in respect of membership after 31 March 2009. Pension benefits in relation to any membership before 1 April 2009 were built up at the rate of 1/80th (pension) and 3/80ths (tax-free lump sum) of pensionable pay for each year of membership up to 31 March 2009. At retirement, members may give up some pension for additional lump sum, subject to HM Revenue and Customs (HMRC) limits. The conversion rate is £12 additional lump sum for every £1 of pension given up.

Councillors have been able to join the Scheme since May 2011. The Scheme application is modified to reflect the fact that councillors hold an elected office. Councillor members have always accrued pension on a career average basis. Prior to 1 April 2015 pension was accrued at a rate of 1/60th and thereafter at a rate of 1/49th.

The Scheme is funded by contributions made by both employees/councillors and employers. Prior to 1 April 2009, a member's contribution rates were fixed at 6% of their pensionable remuneration (except for those who were entitled to contribute to the Scheme at 5% before 1 February 2003 and have remained in continuous employment). Tiered member contribution rates, determined by the whole-time equivalent rate of pay, were introduced from 1 April 2009. From 1 April 2015, the member contribution rates are determined on the actual rate of pay.

The ranges for the bands for tiered contribution rates are revised by the Department for Communities in April each year in accordance with the increase applied to a pension in payment. The bands, effective from 1 April 2019, were as follows:

Table 5: Employee Contribution Rates

Band	Range	Employee Contribution Rate
1	£0 - £14,800	5.5%
2	£14,801 - £22,600	5.8%
3	£22,601 - £37,700	6.5%
4	£37,701 - £45,700	6.8%
5	£45,701 - £90,400	8.5%
6	More than £90,400	10.5%

Employers' contribution rates are determined by the fund's actuary every three years at the triennial valuation. A formal triennial actuarial valuation of the Fund as at 31 March 2016 was carried out in 2016/17 and set the employer contribution rates for the 3 years commencing 1 April 2017 as follows:

Table 6: Employer Contribution Rates

Year	Employer Contribution Rate
1 April 2017 - 31 March 2018	18% + 2% deficit recovery contribution
1 April 2018 - 31 March 2019	19% + 2% deficit recovery contribution
1 April 2019 - 31 March 2020	20% + 2% deficit recovery contribution

The Local Government Pension Scheme Regulations (Northern Ireland) 2014 were made on 27 June 2014 and The Local Government Pension Scheme (Amendment and Transitional Provisions) Regulations (Northern Ireland) 2014 were made on 30 June 2014. Both sets of regulations are effective from 1 April 2015.

Councillors have been able to join the Scheme since May 2011 and therefore have not accrued significant benefits thus far. However, the in-year pension contributions made by the Council for all councillors during 2019/20 was £122,159.

The value of pension benefits of the most senior management of the Council accrued during the year was as follows:

Table 7: Pension Benefits of senior staff in 2019/20 (audited information)

Officers	Accrued Pension at pension age as at 31/3/20 £'000	Real Increase in pension and related lump sum at pension age	CETV at 31/3/20 £'000	CETV at 31/3/19 £'000	Real increase in CETV £'000
Anne Donaghy	35-40 47.5-50(LS)	0-2.5 0-2.5 (LS)	592	547	30
Philip Thompson	30-35 47.5-50(LS)	0-2.5 0-2.5 (LS)	547	496	35
Linda Williams	25-30 15-20 (LS)	0-2.5 0-2.5 (LS)	330	298	19
Katrina Morgon	20-25 15-20 (LS)	0-2.5 0-2.5 (LS)	288	252	25
John McVeigh	20-25 25-30 (LS)	20-25 25-30 (LS)	349	12	330
Louise Kennedy	15-20 5-10 (LS)	2.5-5 0-2.5 (LS)	172	123	42
Nicola Rows	0-5 0 (LS)	0-2.5 0 (LS)	8	-	4

LS - Lump Sum

During the year John Mc Veigh elected to combine previously deferred benefits with his active record, resulting in significant increases this year.

The Cash Equivalent Transfer Value (CETV)

This is the actuarially assessed capitalised value of the pension scheme benefits accrued by a member at a particular point in time. The benefits valued are the member's accrued benefits and any contingent spouse's pension payable from the scheme. It is a payment made by a pension scheme or arrangement to secure pension benefits in another pension scheme or arrangement when the member leaves a scheme and chooses to transfer the pension benefits they have accrued in their former scheme. The pension figures shown relate to the benefits that the individual has accrued as a consequence of their total membership of the pension scheme, not just their service in a senior capacity to which disclosure applies. CETVs are calculated in accordance with The Occupational Pension Schemes (Transfer Values) (Amendment) Regulations and do not take account of any actual or potential reduction to benefits resulting from Lifetime Allowance Tax which may be due when pension benefits are taken.

The real increase in the value of the CETV

This reflects the increase in CETV effectively funded by the employer. It takes account of the increase in accrued pension due to inflation, contributions paid by the employee (including the value of any benefits transferred from another pension scheme or arrangement) and uses common market valuation factors for the start and end of the period.

Chief Executive

Date: 16/12/2020

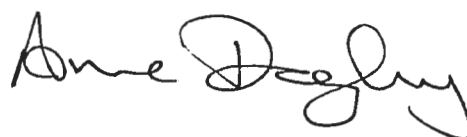


Certificate of the Chief Financial Officer

I certify that:

- (a) the Statement of Accounts for the year ended 31st March 2020 on pages 39 to 108 has been prepared in the form directed by the Department for Communities and under the accounting policies set out on pages 43 to 66.
- (b) in my opinion the Statement of Accounts gives a true and fair view of the income and expenditure and cash flows for the financial year and the financial position as at the end of the financial year ending 31st March 2020.

Chief Financial Officer



Date 16/12/2020

Council Approval of Statement of Accounts

These accounts were approved by resolution of the Council/Committee on:


Chairman

Date 15/12/2020

INDEPENDENT AUDITOR'S REPORT TO THE MEMBERS OF MID AND EAST ANTRIM BOROUGH COUNCIL

Opinion on financial statements

I have audited the financial statements of Mid and East Antrim Borough Council for the year ended 31 March 2020 under the Local Government (Northern Ireland) Order 2005. The financial statements comprise the Movement in Reserves Statement, Comprehensive Income and Expenditure Statement, Balance Sheet, Cash Flow Statement, and the related notes including significant accounting policies. These financial statements have been prepared under the accounting policies set out within them. I have also audited the information in the Remuneration Report that is described in that report as having been audited.

In my opinion the financial statements:

- give a true and fair view, in accordance with relevant legal and statutory requirements and the Code of Practice on Local Authority Accounting in the United Kingdom 2019-20, of the financial position of Mid and East Antrim Borough Council as at 31 March 2020 and its income and expenditure for the year then ended; and
- have been properly prepared in accordance with the Local Government (Accounts and Audit) Regulations (Northern Ireland) 2015 and the Department for Communities' directions issued thereunder.

Basis of opinion

I conducted my audit in accordance with International Standards on Auditing (UK) (ISAs). My responsibilities under those standards are further described in the Auditor's responsibilities for the audit of the financial statements section of this certificate. My staff and I are independent of Mid and East Antrim Borough Council in accordance with the ethical requirements of the Financial Reporting Council's Revised Ethical Standard 2016, and have fulfilled our other ethical responsibilities in accordance with these requirements. I believe that the audit evidence obtained is sufficient and appropriate to provide a basis for my opinion.

Conclusions relating to going concern

I have nothing to report in respect of the following matters in relation to which the ISAs(UK) require me to report to you where:

- Mid and East Antrim Borough Council's use of the going concern basis of accounting in the preparation of the financial statements is not appropriate; or
- Mid and East Antrim Borough Council has not disclosed in the financial statements any identified material uncertainties that may cast significant doubt about Mid and East Antrim Borough Council's ability to continue to adopt the going concern basis.

Other Information

The Chief Financial Officer is responsible for the other information included in the Statement of Accounts. The other information comprises the information included in the Statement of Accounts other than the financial statements, the parts of the Remuneration Report described in the report as having been audited, and my audit certificate and report. My opinion on the financial statements does not cover the other information and I do not express any form of assurance conclusion thereon.

In connection with my audit of the financial statements, my responsibility is to read the other information and, in doing so, consider whether the other information is materially inconsistent with the financial statements or my knowledge obtained in the audit or otherwise appears to be materially misstated. If, based on the work I have performed, I conclude that there is a material misstatement of this other information, I am required to report that fact. I have nothing to report in this regard.

Opinion on other matters

- In my opinion:
 - the part of the Remuneration Report to be audited has been properly prepared in accordance with the Department for Communities' directions made under the Local Government (Accounts and Audit) Regulations (Northern Ireland) 2015; and
 - the information given in the Statement of Accounts for the financial year ended 31 March 2020 is consistent with the financial statements.

Responsibilities of the Chief Financial Officer for the financial statements

As explained more fully in the Statement of Council's and Chief Financial Officer's Responsibilities, the Chief Financial Officer is responsible for the preparation of the financial statements and for being satisfied that they give a true and fair view of the income and expenditure and cash flows for the financial year and the financial position as at the end of the financial year.

Auditor's responsibilities for the audit of the financial statements

My responsibility is to audit the financial statements in accordance with the Local Government (Northern Ireland) Order 2005 and the Local Government Code of Audit Practice.

My objectives are to obtain evidence about the amounts and disclosures in the financial statements sufficient to give reasonable assurance that the financial statements are free from material misstatement, whether caused by fraud or error. Reasonable assurance is a high level of assurance, but is not a guarantee that an audit conducted in accordance with ISAs (UK) will always detect a material misstatement when it exists. Misstatements can arise from fraud or error and are considered material if, individually or in the aggregate, they could reasonably be expected to influence the economic decisions of users taken on the basis of these financial statements.

A further description of my responsibilities for the audit of the financial statements is located on the Financial Reporting Council's website www.frc.org.uk/auditorsresponsibilities. This description forms part of my certificate.

This report is made solely to the Members of Mid and East Antrim Borough Council in accordance with the Local Government (Northern Ireland) Order 2005 and for no other purpose, as specified in the Statement of Responsibilities of the Local Government Auditor and Local Government Bodies.

Matters on which I report by exception

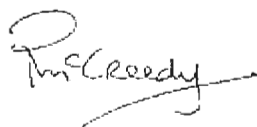
I have nothing to report in respect of the following matters which I report to you if:

- in my opinion:
 - the Annual Governance Statement:
 - does not reflect compliance with the Code of Practice on Local Authority Accounting in the United Kingdom 2019-20;

- does not comply with proper practices specified by the Department for Communities;
 - is misleading or inconsistent with other information I am aware of from my audit; or
- adequate accounting records have not been kept; or
 - the Statement of Accounts and the part of the Remuneration Report to be audited are not in agreement with the accounting records; or
 - I have not received all of the information and explanations I require for my audit, or
- I issue a report in the public interest under Article 9 of the Local Government (Northern Ireland) Order 2005; or
 - I designate under Article 12 of the Local Government (Northern Ireland) Order 2005 any recommendation made to the Council; or
 - I exercise the other special powers of the auditor under Article 19 to 21 of the Local Government (Northern Ireland) Order 2005.

Certificate

I certify that I have completed the audit of accounts of Mid and East Antrim Borough Council in accordance with the requirements of the Local Government (Northern Ireland) Order 2005 and the Local Government Code of Audit Practice.



Pamela McCreedy
 Local Government Auditor
 Northern Ireland Audit Office
 106 University Street
 Belfast
 BT7 1EU

21 December 2020



Mid and East Antrim Borough Council

Comprehensive Income and Expenditure Statement for the year ended 31 March 2020

The Comprehensive Income and Expenditure Statement shows the accounting cost in the year of providing services in accordance with generally accepted accounting practices, rather than the amount to be funded from taxation. Councils raise taxation to cover expenditure in accordance with statutory requirements; this may be difference from the accounting cost. The taxation position is shown in both the Expenditure and Funding Analysis and the Movement in Reserves Statement.

The Comprehensive Income and Expenditure Statement has been restated in 2019/20 to report on a Directorate basis rather than a Service basis. This is to align the presentation of this statement to the internal management reporting structure thus enhancing comparability

Directorate Expenditure	Notes	2019/20		Net Expenditure £	Restated Gross Expenditure £	2018/19	
		Gross Expenditure £	Gross Income £			Restated Gross Income £	Restated Net Expenditure £
Chief Executive	2	1,337,919	(250,905)	1,087,014	1,391,205	(71,407)	1,319,798
Support Services	2	5,839,380	(515,150)	5,324,230	8,943,891	(16,447)	8,927,444
Community	2	16,905,792	(5,961,753)	10,944,039	15,882,249	(5,498,273)	10,383,976
Operations	2	30,228,520	(3,384,546)	26,843,974	30,776,313	(3,419,679)	27,356,634
Development	2	14,510,136	(4,946,327)	9,563,809	16,164,170	(4,416,945)	11,747,225
Corporate Services	2	6,387,268	(155,480)	6,231,788	5,250,502	(154,725)	5,095,777
Cost of Services on Continuing Operations		75,209,015	(15,214,161)	59,994,854	78,408,330	(13,577,476)	64,830,854
Other Operating Expenditure/Income	8	52,901	(98,722)	(45,821)	117,842	(254,663)	(136,821)
Financing and Investment Income and Expenditure	9	3,716,935	(263,764)	3,453,171	3,791,542	(207,420)	3,584,122
(Surplus) or Deficit on Discontinued Operations				-			-
Share of Operating Results of associates and joint ventures	0	-	-	-	-	-	-
Net Operating Expenditure		78,978,851	(15,576,647)	63,402,204	82,317,714	(14,039,559)	68,278,155
Taxation and Non-Specific Grant Income	10	-	(53,830,071)	(53,830,071)	-	(54,725,388)	(54,725,388)
Surplus/(Deficit) on the Provision of Services		78,978,851	(69,406,718)	(9,572,133)	82,317,714	(68,764,947)	(13,552,767)
Surplus/(Deficit) on revaluation of non-current assets	11			8,256,265			5,201,408
Impairment losses on non-current assets charged to the Revaluation Reserve	11			-			-
Surplus/(Deficit) arising on revaluation of available-for-sale financial assets	27			-			-
Remeasurements of the Net Defined Benefit Liability (Asset)	21			(675,000)			3,071,000
Share of Other Comprehensive Expenditure & Income of associates and joint ventures	0		-	-			-
Other Comprehensive Income and Expenditure				7,581,265			8,272,408
Total Comprehensive Income and Expenditure				(1,990,868)			(5,280,359)

Mid and East Antrim Borough Council

Movement in Reserves Statement for the year ended 31 March 2020

The Movement in Reserves Statement shows the movement from the start of the year to the end on the different reserves held by the authority, analysed into 'usable reserves' (ie those that can be applied to fund expenditure or reduce local taxation) and other 'unusable reserves'. The Statement shows how the movements in year of the Council's reserves are broken down between gains and losses incurred in accordance with generally accepted accounting practices and the statutory adjustment required to return to the amounts chargeable to council tax for the year. The Net Increase/Decrease line shows the statutory General Fund Balance movements in the year following those adjustments.

	General Fund Summary	Other Fund Balances and Reserves	Capital Receipts Reserve	Total Usable Reserves	Total Unusable Reserves	Total Council Reserves
	£	£	£	£	£	£
Balance as at 1 April 2018	4,094,437	11,533,436	-	15,627,873	106,568,470	122,196,343
Movement in reserves during the year						
Surplus/ (Deficit) on the provision of services	(13,552,767)	-	-	(13,552,767)	-	(13,552,767)
Other Comprehensive Income and Expenditure	-	-	-	-	8,272,408	8,272,408
Total Comprehensive Income and Expenditure	(13,552,767)	-	-	(13,552,767)	8,272,408	(5,280,359)
Adjustments between accounting basis & funding under regulations	13,940,913	76,290	117,500	14,134,703	(14,134,703)	-
Net Increase before transfers to Statutory and Other Reserves	388,146	76,290	117,500	581,936	(5,862,295)	(5,280,359)
Transfers to / from Statutory and Other Reserves	(281,850)	281,850	-	-	-	-
Increase/ Decrease in year	106,296	358,140	117,500	581,936	(5,862,295)	(5,280,359)
Balance as at 31 March 2019	4,200,733	11,891,576	117,500	16,209,809	100,706,175	116,915,984
Movement in reserves during the year						
Surplus/ (Deficit) on the provision of services	(9,572,133)	-	-	(9,572,133)	-	(9,572,133)
Other Comprehensive Income and Expenditure	-	-	-	-	7,581,265	7,581,265
Total Comprehensive Income and Expenditure	(9,572,133)	-	-	(9,572,133)	7,581,265	(1,990,868)
Adjustments between accounting basis & funding under regulations	8,064,773	(682,196)	(117,500)	7,265,077	(7,106,132)	158,945
Net Increase before transfers to Statutory and Other Reserves	(1,507,360)	(682,196)	(117,500)	(2,307,056)	475,133	(1,831,923)
Transfers to / from Statutory and Other Reserves	1,526,062	(1,526,062)	-	-	-	-
Increase/(Decrease) in year	18,702	(2,208,258)	(117,500)	(2,307,056)	475,133	(1,831,923)
Balance as at 31 March 2020	4,219,435	9,683,318	-	13,902,753	101,181,308	115,084,061

Mid and East Antrim Borough Council
Balance Sheet as at 31 March 2020

	Note	31st March 2020	31st March 2019
		£	£
Fixed Assets	11	218,998,672	210,689,089
Long Term Investments	16	-	-
Investment in Associates and Joint Ventures		-	-
Long Term Debtors	15	1,529,982	1,683,396
Contract Assets		-	-
Contract Costs		-	-
LONG TERM ASSETS		220,528,654	212,372,485
Short Term Investments	16	8,477,039	8,553,125
Inventories	14	325,825	285,947
Short Term Debtors	15	6,365,458	8,268,513
Cash and Cash Equivalents	25	1,942,281	1,727,563
Assets Held for Sale	11	-	-
Contract Assets		-	-
Contract Costs		-	-
CURRENT ASSETS		17,110,603	18,835,148
Bank Overdraft	25	-	-
Short Term Borrowing	17	12,698,985	11,731,612
Short Term Creditors	18	6,549,759	6,027,564
Provisions	19	510,482	661,590
Contract Liabilities		-	-
CURRENT LIABILITIES		19,759,226	18,420,766
Long Term Creditors	18	-	-
Provisions	19	2,780,202	2,924,177
Long Term Borrowing	17	52,867,712	51,066,705
Other Long Term Liabilities	21	47,307,000	41,880,000
Contract Liabilities		-	-
Donated Assets Account	22	-	-
Capital Grants Receipts in Advance	23	-	-
LONG TERM LIABILITIES		102,954,914	95,870,882
NET ASSETS		114,925,117	116,915,985
USABLE RESERVES			
Capital Receipts Reserve	26	-	117,500
Capital Grants Unapplied Account	26	89,962	147,280
Capital Fund	26	4,921,707	5,693,865
Renewal and Repairs Fund	26	2,725,617	2,725,617
Other Balances and Reserves	26	1,798,752	3,324,814
General Fund	26	4,219,435	4,200,733
		13,755,473	16,209,809
UNUSABLE RESERVES			
Capital Adjustment Account	27	68,598,952	67,397,848
Financial Instruments Adjustment Account	27	-	-
Revaluation Reserve	27	81,046,358	76,306,268
Available for Sale Financial Instruments Reserve	27	-	-
Financial Instruments Revaluation Reserve	27	-	-
Pensions Reserve	27	(47,307,000)	(41,880,000)
Capital Receipts Deferred Account	27	-	-
Accumulated Absences Account	27	(620,386)	(557,995)
Landfill Regulations Reserve	27	-	-
Provisions Discount Rate Reserve	27	(548,281)	(559,946)
		101,169,643	100,706,175
NET WORTH		114,925,116	116,915,984

Mid and East Antrim Borough Council
Cash Flow Statement at 31 March 2020

The Cash Flow Statement shows the changes in cash and cash equivalents of the Council during the reporting period. The statement shows how the Council generates and uses cash and cash equivalents by classifying cash flows as operating, investing and financing activities. The amount of net cash flows arising from operating activities is a key indicator of the extent to which the operations of the Council are funded by way of taxation and grant income or from the recipients of services provided by the Council. Investing activities represent the extent to which cash outflows have been made for resources which are intended to contribute to the Council's future service delivery. Cash flows arising from financing activities are useful in predicting claims on future cash flows by providers of capital (ie borrowing) to the Council.

	Note	2019/20	2018/19
		£	£
Net Deficit on the provision of services		(9,572,133)	(13,552,767)
Adjustment for non-cash movements	25	15,009,689	15,673,464
Adjust for items included in the net surplus or deficit on the provision of services that are investing and financing activities	25	(796,508)	841,733
Net cash flows from operating activities	25	4,641,048	2,962,430
Cash flows from Investing Activities	25	(7,194,717)	(3,246,722)
Net Cash flows from Financing Activities	25	2,768,387	(61,006)
Net increase or decrease in cash and cash equivalents		214,718	(345,298)
Cash and cash equivalents at the beginning of the reporting period		1,727,563	2,072,861
Cash and cash equivalents at the end of the reporting period		1,942,281	1,727,563

**Mid and East Antrim Borough Council
Notes to the Financial Statements
FOR THE YEAR ENDED 31 MARCH 2020**

1 Accounting Policies

a General Principles

The Statement of Accounts summarises the Council's transactions for the 2019/20 financial year and its position at the year-end of 31 March 20. The Council is required to prepare an annual Statement of Accounts in a form directed by the Department for Communities in accordance with regulations 3 (7) and (8) in the Local Government (Accounts and Audit) Regulations (Northern Ireland) 2015 in accordance with proper accounting practices.

These practices primarily comprise the Code of Practice on Local Authority Accounting in the United Kingdom 2018/19, supported by International Financial Reporting Standards (IFRS). The accounting convention adopted in the Statement of Accounts is principally historical cost, modified by the revaluation of certain categories of non-current assets and financial instruments.

The Code of Practice on Local Authority Accounting in the United Kingdom 2017/18 also requires disclosure in respect of:

Summary of Significant Accounting Policies

i) Accruals of Income and Expenditure

Activity is accounted for in the year that it takes place, not simply when cash payments are made or received. In particular:

- Revenue from contracts with service recipients, whether for services or the provision of goods, is recognised when (or as) the goods or services are transferred to the service recipient in accordance with the performance obligations in the contract.

- Supplies are recorded as expenditure when they are consumed – where there is a gap between the date supplies are received and their consumption, they are carried as inventories on the Balance Sheet.

- Expenses in relation to services received (including services provided by employees) are recorded as expenditure when the services are received rather than when payments are made.

- Interest receivable on investments and payable on borrowings is accounted for respectively as income and expenditure on the basis of the effective interest rate for the relevant financial instrument rather than the cash flows fixed or determined by the contract.

- Where revenue and expenditure have been recognised but cash has not been received or paid, a debtor or creditor for the relevant amount is recorded in the Balance Sheet. Where it is doubtful that debts will be settled, the balance of debtors is written down and a charge made to revenue for the income that might not be collected.

ii) **Acquisitions and Discontinued Operations**

Additional policy detail required where an authority has acquired operations (or transferred operations under combinations of public sector bodies) during the financial year.

iii) **Provision for Single Status, Job Evaluation and Pay and Grading Reviews**

The Council has made a provision for the costs of settling claims for back pay arising from discriminatory payments incurred before the Council implemented its Single Status Policy. Local government reform resulted in the assets and liabilities of the former Ballymena, Carrickfergus and Larne legacy councils being transferred to Mid and East Antrim Borough Council on 1 April 2015.

As the staff of the former legacy councils and those transferring in from the Department of the Environment's Planning Service are protected by the Transfer of Protected Undertakings Act (Northern Ireland) 2006 (TUPE), Council has not sought to amend these employees terms and conditions of employment. Appropriate provision will be made for any financial consequences of employees terms and conditions as and when required.

iv) **Cash and Cash Equivalents**

Cash is represented by cash in hand and deposits with financial institutions repayable without penalty on notice of not more than 24 hours. Cash equivalents are highly liquid investments that mature in a specified period, no more than three months or less from the date of acquisition and that are readily convertible to known amounts of cash with insignificant risk of change in value.

In the Cash Flow Statement, cash and cash equivalents are shown net of bank overdrafts that are repayable on demand and form an integral part of the Council's cash management.

v) **Contingent Assets**

A contingent asset arises where an event has taken place that gives the Council a possible asset whose existence will only be confirmed by the occurrence or otherwise of uncertain future events not wholly within the control of the Council.

Contingent assets are not recognised in the Balance Sheet but disclosed in a note to the accounts where it is probable that there will be an inflow of economic benefits or service potential.

vi) **Contingent Liabilities**

A contingent liability arises where an event has taken place that gives the Council a possible obligation whose existence will only be confirmed by the occurrence or otherwise of uncertain future events not wholly within the control of the Council. Contingent liabilities also arise in circumstances where a provision would otherwise be made but either it is not probable that an outflow of resources will be required or the amount of the obligation cannot be measured reliably.

Contingent liabilities are not recognised in the Balance Sheet but disclosed in a note to the accounts.

vii) **Employee Benefits**

Short-term employee benefits are those due to be settled wholly within 12 months of the year-end. They include such benefits as wages and salaries, paid annual leave and paid sick leave, bonuses and non-monetary benefits (e.g. cars) for current employees, and are recognised as an expense in the year in which employees render service to the Council. An accrual is made for the cost of holiday entitlements (or any form of leave, eg time off in lieu) earned by employees but not taken before the year-end which employees can carry forward into the next financial year. The accrual is made at the wage and salary rates applicable in the following accounting year, being the period in which the employee takes the benefit. The accrual is charged to Surplus or Deficit on the Provision of Services, but then reversed out through the Movement in Reserves Statement so that holiday entitlements are charged to revenue in the financial year in which the holiday absence occurs.

Termination benefits

Termination benefits are amounts payable as a result of a decision by the Council to terminate an officer's employment before the normal retirement date or an officer's decision to accept voluntary redundancy in exchange for those benefits and are charged on an accruals basis to the appropriate service segment or, where applicable, to a corporate service segment at the earlier of when the Council can no longer withdraw the offer of those benefits or when the Council recognises costs for a restructuring. Where termination benefits involve the enhancement of pensions, statutory provisions require the General Fund Balance to be charged with the amount payable by the Council to the pension fund or pensioner in the year, not the amount calculated according to the relevant accounting standards. In the Movement in Reserves Statement, appropriations are required to and from the Pensions Reserve to remove the notional debits and credits for pension enhancement termination benefits and replace them with debts for the cash paid to the pension fund and pensioners and any such amounts payable but unpaid at the year-end.

Where termination benefits involve the enhancement of pensions, statutory provisions require the General Fund balance to be charged with the amount payable by the Council to the pension fund or pensioner in the year, not the amount calculated according to the relevant accounting standards. In the Movement in Reserves Statement, appropriations are required to and from the Pensions Reserve to remove the notional debits and credits for pension enhancement termination benefits and replace them with debits for the cash paid to the pension fund and pensioners and any such amounts payable but unpaid at the year-end.

Post Employment Benefits

Employees of the Council are members of the Northern Ireland Local Government Officers' Pension Fund administered by the Northern Ireland Local Government Officers' Superannuation Committee. The scheme provides defined benefits to members (retirement lump sums and pensions), earned as employees worked for the Council.

The Northern Ireland Local Government Officers' Pension Fund

The Northern Ireland Local Government Officers' Pension Fund is accounted for as a defined benefits scheme.

The liabilities of the Northern Ireland Local Government Officers' Pension Fund attributable to the Council are included in the Balance Sheet on an actuarial basis using the projected unit method – i.e. an assessment of the future payments that will be made in relation to retirement benefits earned to date by employees, based on assumptions about mortality rates, employee turnover rates, etc, and projections of projected earnings for current employees.

Liabilities are discounted to their value at current prices, using a discount rate based on the Aon Hewitt GBP Select AA Curve over the duration of the Employer's liabilities.

The assets of the Northern Ireland Local Government Officers' pension fund attributable to the Council are included in the Balance Sheet at their fair value:

- quoted securities – current bid price
- unquoted securities – professional estimate
- property – market value
- unitised securities – current bid price

The change in the net pensions liability is analysed into seven components:

The change in the net pensions liability is analysed into the following components:

Service cost comprising:

Current Service Cost – the increase in liabilities as a result of years of service earned this year - allocated in the Comprehensive Income and Expenditure Statement to the services for which the employees worked

Past Service Cost – the increase in liabilities as a result of a scheme amendment or curtailment whose effect relates to years of service earned in earlier years - debited to the Surplus or Deficit on the Provision of Services in the Comprehensive Income and Expenditure Statements. [The treatment of past service costs will depend on the decisions of the Council about how they are allocated to service segments.]

Within Financing and Investment Income and Expenditure

Net interest on the net defined benefit liability (asset), – i.e. net interest expense for the Council, the change during the period in the net defined benefit liability (asset) that arises from the passage of time charged to the Financing and Investment Income and Expenditure line of the Comprehensive Income and Expenditure Statement – this is calculated by applying the discount rate used to measure the defined benefit obligation at the beginning of the period to the net defined benefit liability (asset) at the beginning of the period – taking into account any changes in the net defined benefit liability (asset) during the period as a result of contribution and benefit payments.

Within Other Comprehensive Income and Expenditure (Remeasurements)

The Return on Plan Assets – excluding amounts recognised in the Net Interest on the Net Defined Benefit Liability (Asset) charged to the Pensions Reserve as Other Comprehensive Income and Expenditure. This includes interest, dividends and other income derived from the plan assets, together with realised and unrealised gains or losses on the plan assets, less any costs of managing plan assets, and any tax payable by the plan itself other than tax included in the actuarial assumptions used to measure the present value of the defined benefit obligation.

Actuarial Gains and Losses – changes in the net pensions liability that arise because events have not coincided with assumptions made at the last actuarial valuation or because the actuaries have updated their assumptions, charged to the Pensions Reserves as Other Comprehensive Income and Expenditure.

Within the Movement in Reserves Statement Appropriations

Contributions by Scheme Participants – the increase in scheme liabilities and assets due to payments into the scheme by employees (where increased contribution increases pension due to the employee in the future).

Contributions by the Employer – the increase in scheme assets due to payments into the scheme by the employer.

In relation to retirement benefits, statutory provisions require the General Fund balance to be charged with the amount payable by the Council to the pension fund or directly to pensioners in the year, not the amount calculated according to the relevant accounting standards. In the Movement in Reserves Statement, this means that there are transfers to and from the Pensions Reserve to remove the notional debits and credits for retirement benefits and replace them with debits for the cash paid to the pension fund and pensioners and any such amounts payable but unpaid at the year-end. The negative balance that arises on the Pensions Reserve thereby measures the beneficial impact to the General Fund of being required to account for retirement benefits on the basis of cash flows rather than as benefits are earned by employees.

Discretionary Benefits

The Council also has restricted powers to make discretionary awards of retirement benefits in the event of early retirements. Any liabilities estimated to arise as a result of an award to any member of staff are accrued in the year of the decision to make the award and accounted for using the same policies that are applied to the Northern Ireland Local Government Officers' pension fund.

As a result of Local Government Reform on 1 April 2015, staff that transferred from Central Government to the Council retained membership of the Northern Ireland Civil Service (NICS) Pension Scheme. The scheme provides defined benefits to members (retirement lump sums and pensions). However, the arrangements for the NICS Pension Scheme mean that liabilities for these benefits cannot ordinarily be identified specifically to the Council. The scheme is therefore accounted for as if it were a defined contribution scheme and no liability for future payments of benefits is recognised in the Balance Sheet.

viii) **Events After the Balance Sheet Date**

Events after the Balance Sheet date are those events, both favourable and unfavourable, that occur between the end of the reporting period and the date when the Statement of Accounts is authorised for issue. Two types of events can be identified:

- those that provide evidence of conditions that existed at the end of the reporting period – the Statement of Accounts is adjusted to reflect such events
- those that are indicative of conditions that arose after the reporting period – the Statement of Accounts is not adjusted to reflect such events, but where a category of events would have a material effect, disclosure is made in the notes of the nature of the events and their estimated financial effect.

The Statement of Accounts may subsequently be adjusted up to the date when they are authorised for issue. This date will be recorded on the Statement of Accounts and is usually the date the Local Government Auditor issues the certificate and opinion. Where material adjustments are made in this period they will be disclosed.

Events taking place after the date of authorisation for issue are not reflected in the Statement of Accounts.

ix) **Exceptional Items**

When items of income and expense are material, their nature and amount is disclosed separately, either on the face of the Comprehensive Income and Expenditure Statement or in the notes to the accounts, depending on how significant the items are to an understanding of the Council's financial performance.

x) **Prior Period Adjustments, Changes in Accounting Policies and Estimates and Errors**

Prior period adjustments may arise as a result of a change in accounting policies or to correct a material error. Changes in accounting estimates are accounted for prospectively, i.e. in the current and future years affected by the change and do not give rise to a prior period adjustment.

Changes in accounting policies are only made when required by proper accounting practices or the change provides more reliable or relevant information about the effect of transactions, other events and conditions on the Council's financial position or financial performance. Where a change is made, it is applied retrospectively (unless stated otherwise) by adjusting opening balances and comparative amounts for the prior period as if the new policy had always been applied.

Material errors discovered in prior period figures are corrected retrospectively by amending opening balances and comparative amounts for the prior period.

xi) **Financial Instruments**

Financial liabilities are recognised on the Balance Sheet when the Council becomes a party to the contractual provisions of a financial instrument and are initially measured at fair value and are carried at their amortised cost. Annual charges to the Financing and Investment Income and Expenditure line in the Comprehensive Income and Expenditure Statement for interest payable are based on the carrying amount of the liability, multiplied by the effective rate of interest for the instrument. The effective interest rate is the rate that exactly discounts estimated future cash payments over the life of the instrument to the amount at which it was originally recognised.

For most of the borrowings that the Council has, this means that the amount presented in the Balance Sheet is the outstanding principal repayable (plus accrued interest); and interest charged to the Comprehensive Income and Expenditure Statement is the amount payable for the year according to the loan agreement.

However, the bonds issued by the Council in 2019/20 are carried at a lower amortised cost than the outstanding principal, and interest is charged at a marginally higher effective rate of interest than the rate payable to bondholders, as a material amount of costs incurred in its issue is being financed over the life of the stock.

Where premiums and discounts have been charged to the Comprehensive Income and Expenditure Statement, regulations allow the impact on the General Fund Balance to be spread over future years. The Council has a policy of spreading the gain or loss over the term that was remaining on the loan against which the premium was payable or discount receivable when it was repaid. The reconciliation of amounts charged to the Comprehensive Income and Expenditure Statement to the net charge required against the General Fund Balance is managed by a transfer to or from the Financial Instruments Adjustment Account in the Movement in Reserves Statement.

Additional policy detail required where a Council has entered into financial guarantees or has financial liabilities at fair value through profit or loss (such as derivatives).

Financial Assets

Financial assets are classified based on a classification and measurement approach that reflects the business model for holding the financial assets and their cashflow characteristics. There are three main classes of financial assets measured at:

- amortised cost
- fair value through profit or loss (FVPL), and
- fair value through other comprehensive income (FVOCI)

The Council's business model is to hold investments to collect contractual cash flows. Financial assets are therefore classified as amortised cost, except for those whose contractual payments are not solely payment of principal and interest (i.e. where the cash flows do not take the form of a basic debt instrument).

Financial Assets Measured at Amortised Cost

Financial assets measured at amortised cost are recognised on the Balance Sheet when the Council becomes a party to the contractual provisions of a financial instrument and are initially measured at fair value. They are subsequently measured at their amortised cost. Annual credits to the Financing and Investment Income and Expenditure line in the Comprehensive Income and Expenditure Statement for interest receivable are based on the carrying amount of the asset multiplied by the effective rate of interest for the instrument. For most of the financial assets held by the Council, this means that the amount presented in the Balance Sheet is the outstanding principal receivable (plus accrued interest) and interest credited to the Comprehensive Income and Expenditure is the amount receivable for the year in the loan agreement.

Any gains and losses that arise on the derecognition of an asset are credited or debited to the Financing and Investment Income and Expenditure line in the Comprehensive Income and Expenditure Statement.

Expected Credit Loss Model

The Council recognises expected credit losses on all of its financial assets held at amortised cost [or where relevant FVOCI], either on a 12-month or lifetime basis. The expected credit loss model also applies to lease receivables and contract assets. Only lifetime losses are recognised for trade receivables (debtors) held by the Council.

Impairment losses are calculated to reflect the expectation that the future cash flows might not take place because the borrower could default on their obligations. Credit risk plays a crucial part in assessing losses. Where risk has increased significantly since an instrument was initially recognised, losses are assessed on a lifetime basis. Where risk has not increased significantly or remains low, losses are assessed on the basis of 12-month expected losses.

Financial Assets Measured at Fair Value through Profit or Loss

Financial assets that are measured at FVPL are recognised on the Balance Sheet when the Council becomes a party to the contractual provisions of a financial instrument and are initially measured and carried at fair value. Fair value gains and losses are recognised as they arrive in the Surplus or Deficit on Provision of Services.

The fair value measurements of the financial assets are based on the following techniques:

- instruments with quoted market prices - the market price
- other instruments with fixed and determinable payments - discounted cash flow analysis.

The inputs to the measurement techniques are categorised in accordance with the following three levels:

- Level 1 inputs - quoted prices (unadjusted) in active markets for identical assets that the authority can access at the measurement date.
- Level 2 inputs - inputs other than quoted prices included within Level 1 that are observable for the asset, either directly or indirectly.
- Level 3 inputs - unobservable inputs for the asset.

Any gains and losses that arise on the derecognition of the asset are credited or debited to the Financing and Investment Income and Expenditure line in the Comprehensive Income and Expenditure Statement.

Instruments entered into before 1 April 2006

The Council entered into a number of financial guarantees that are not required to be accounted for as financial instruments. These guarantees are reflected in the Statement of Accounts to the extent that provisions might be required or a contingent liability note is needed under the policies set out in the section on Provisions, Contingent Liabilities and Contingent Assets.

xii) Foreign Currency Translation

Where the Council has entered into a transaction denominated in a foreign currency, the transaction is converted into sterling at the exchange rate applicable on the date the transaction was effective. Where amounts in foreign currency are outstanding at the year-end, they are reconverted at the spot exchange rate at 31 March. Resulting gains or losses are recognised in the Financing and Investment Income and Expenditure line in the Comprehensive Income and Expenditure Statement.

xiii) Government Grants and Contributions

Whether paid on account, by instalments or in arrears, government grants and third party contributions and donations are recognised as due to the Council when there is reasonable assurance that:

- the Council will comply with the conditions attached to the payments, and
- the grants or contributions will be received.

Amounts recognised as due are not credited to the Comprehensive Income and Expenditure Statement until conditions attaching to the grant or contribution have been satisfied. Conditions are stipulations that specify that the future economic benefits or service potential embodied in the asset in the form of the grant or contribution are required to be consumed by the recipient as specified, or future economic benefits or service potential must be returned to the transferor.

Monies advanced as grants and contributions for which conditions have not been satisfied are carried in the Balance Sheet as creditors. When conditions are satisfied, the grant or contribution is credited to the relevant service line (attributable revenue grants and contributions) or Taxation and Non-Specific Grant Income (non-ring-fenced revenue grants and all capital grants) in the Comprehensive Income and Expenditure Statement.

Where capital grants are credited to the Comprehensive Income and Expenditure Statement, they are reversed out of the General Fund Balance in the Movement in Reserves Statement. Where the grant has yet to be used to finance capital expenditure, it is posted to the Capital Grants Unapplied Reserve. Where it has been applied, it is posted to the Capital Adjustment Account. Amounts in the Capital Grants Unapplied Reserve are transferred to the Capital Adjustment Account once they have been applied to fund capital expenditure.

xiv) **Intangible Assets**

Expenditure on non-monetary assets that do not have physical substance but are controlled by the Council as a result of past events (e.g. software licences) is capitalised when it is expected that future economic benefits or service potential will flow from the intangible asset to the Council.

Internally generated assets are capitalised where it is demonstrable that the project is technically feasible and is intended to be completed (with adequate resources being available) and the Council will be able to generate future economic benefits or deliver service potential by being able to sell or use the asset. Expenditure is capitalised where it can be measured reliably as attributable to the asset and restricted to that incurred during the development phase (research expenditure is not capitalised).

Expenditure on the development of websites is not capitalised if the website is solely or primarily intended to promote or advertise the Council's goods or services.

Intangible assets are measured initially at cost. Amounts are only revalued where the fair value of the assets held by the Council can be determined by reference to an active market. In practice, no intangible asset held by the Council meets this criterion, and they are therefore carried at amortised cost. The depreciable amount of an intangible asset is amortised over its useful life to the relevant service line(s) in the Comprehensive Income and Expenditure Statement. An asset is tested for impairment whenever there is an indication that the asset might be impaired – any losses recognised are posted to the relevant service line(s) in the Comprehensive Income and Expenditure Statement. Any gain or loss arising on the disposal or abandonment of an intangible asset is posted to the Other Operating Expenditure line in the Comprehensive Income and Expenditure Statement.

Where expenditure on intangible assets qualifies as capital expenditure for statutory purposes, amortisation, impairment losses and disposal gains and losses are not permitted to have an impact on the General Fund Balance. The gains and losses are therefore reversed out of the General Fund Balance in the Movement in Reserves Statement and posted to the Capital Adjustment Account and (for any sale proceeds greater than £10,000) the Capital Receipts Reserve.

xv) **Inventories & Long Term Contracts**

Inventories are included in the Balance Sheet at the lower of cost and net realisable value. The cost of inventories is assigned using the [FIFO/ weighted average] costing formula.

Long-term contracts are accounted for on the basis of charging the Surplus or Deficit on the Provision of Services with the consideration allocated to the performance obligations satisfied based on the goods or services transferred to the service recipient during the financial year.

xvi) **Investment Property**

Investment properties are those that are used solely to earn rentals and/or for capital appreciation. The definition is not met if the property is used in any way to facilitate the delivery of services or production of goods or is held for sale.

Investment properties are measured initially at cost and subsequently at fair value, being the price that would be received to sell such an asset in an orderly transaction between market participants at the measureable date. As a non-financial asset, investment properties are measured at highest and best use. Properties are not depreciated but are revalued annually according to market conditions at the year-end. Gains and losses on revaluation are posted to the Financing and Investment Income and Expenditure line in the Comprehensive Income and Expenditure Statement. The same treatment is applied to gains and losses on disposal.

Rentals received in relation to investment properties are credited to the Financing and Investment Income line in the Comprehensive Income and Expenditure Statement and result in a gain for the General Fund Balance. However, revaluation and disposal gains and losses are not permitted by statutory arrangements to have an impact on the General Fund Balance. The gains and losses are therefore reversed out of the General Fund Balance in the Movement in Reserves Statement and posted to the Capital Adjustment Account and the Capital Receipts Reserve.

xvii) **Landfill Allowance Scheme**

The Landfill Allowances Scheme operates under the Landfill Allowances Scheme (Northern Ireland) Regulations 2005. Local Authorities are allocated annual target figures for the maximum amount of biodegradable municipal waste that can be sent to landfill but there are no tradable allowances. It is not a 'cap and trade' scheme since landfill allowances are not tradable. For this reason, landfill allowances are not recognised as assets on the Balance Sheet.

xviii) **Leases**

Leases are classified as finance leases where the terms of the lease transfer substantially all the risks and rewards incidental to ownership of the property, plant or equipment from the lessor to the lessee. All other leases are classified as operating leases.

Where a lease covers both land and buildings, the land and buildings elements are considered separately for classification.

Arrangements that do not have the legal status of a lease but convey a right to use an asset in return for payment are accounted for under this policy where fulfilment of the arrangement is dependent on the use of specific assets

The Council as Lessee - Finance Lease

Property, plant and equipment held under finance leases is recognised on the Balance Sheet at the commencement of the lease at its fair value measured at the lease's inception (or the present value of the minimum lease payments, if lower). The asset recognised is matched by a liability for the obligation to pay the lessor. Initial direct costs of the Council are added to the carrying amount of the asset. Premiums paid on entry into a lease are applied to writing down the lease liability. Contingent rents are charged as expenses in the periods in which they are incurred.

Lease payments are apportioned between:

- a. a charge for the acquisition of the interest in the property, plant or equipment – applied to write down the lease liability, and
- b. a finance charge (debited to the Financing and Investment Income and Expenditure line in the Comprehensive Income and Expenditure Statement)

Property, Plant and Equipment recognised under finance leases is accounted for using the policies applied generally to such assets, subject to depreciation being charged over the lease term if this is shorter than the asset's estimated useful life (where ownership of the asset does not transfer to the Council at the end of the lease period).

The Council is not required to raise district rates to cover depreciation or revaluation and impairment losses arising on leased assets. Instead, a prudent annual contribution is made from revenue towards the deemed capital investment in accordance with statutory requirements. Depreciation and revaluation and impairment losses are therefore substituted by a revenue contribution in the General Fund Balance, by way of an adjusting transaction with the Capital Adjustment Account in the Movement in Reserves Statement for the difference between the two.

Operating Leases:

Rentals paid under operating leases are charged to the Comprehensive Income and Expenditure Statement as an expense of the services benefiting from use of the leased property, plant or equipment. Charges are made on a straight-line basis over the life of the lease, even if this does not match the pattern of payments (e.g. there is a rent-free period at the commencement of the lease).

The Council as Lessor - Finance Lease

Where the Council grants a finance lease over a property or an item of plant or equipment, the relevant asset is written out of the Balance Sheet as a disposal. At the commencement of the lease, the carrying amount of the asset in the Balance Sheet (whether Property, Plant and Equipment or Assets Held for Sale) is written off to the Other Operating Expenditure line in the Comprehensive Income and Expenditure Statement as part of the gain or loss on disposal. A gain, representing the Council's net investment in the lease, is credited to the same line in the Comprehensive Income and Expenditure Statement also as part of the gain or loss on disposal (i.e. netted off against the carrying value of the asset at the time of disposal), matched by a lease asset (long term debtor) in the Balance Sheet.

Lease rentals receivable are apportioned between:

- a. a charge for the acquisition of the interest in the property – applied to write down the lease debtor together with any premiums received, and
- b. finance income (credited to the Financing and Investment income and Expenditure line in the Comprehensive Income and Expenditure Statement).

The gain credited to the Comprehensive Income and Expenditure Statement on disposal is not permitted by statute to increase the General Fund Balance and is required to be treated as a capital receipt. Where a premium has been received, this is posted out of the General Fund Balance to the Capital Receipts Reserve in the Movement in Reserves Statement. Where the amount due in relation to the lease asset is to be settled by the payment of rentals in future financial years, this is posted out of the General Fund Balance to the Deferred Capital Receipts Reserve in the Movement in Reserves Statement. [When the future rentals are paid, the element for the capital receipt for the disposal of the asset is used to write down the lease debtor. At this point, the deferred capital receipts are transferred to the Capital Receipts Reserve.]

The written-off value of disposals is not a charge against District rates, as the cost of non-current assets is fully provided for under separate arrangements for capital financing. Amounts are therefore appropriated to the Capital Adjustment Account from the General Fund Balance in the Movement in Reserves Statement.

The Council as Lessor - Operating Lease

Where the Council grants an operating lease over a property or an item of plant or equipment, the asset is retained in the Balance Sheet. Rental income is credited to the Other Operating Expenditure line in the Comprehensive Income and Expenditure Statement. Credits are made on a straight-line basis over the life of the lease, even if this does not match the pattern of payments (e.g. there is a premium paid at the commencement of the lease). Initial direct costs incurred in negotiating and arranging the lease are added to the carrying amount of the relevant asset and charged as an expense over the lease term on the same basis as rental income.

Additional Policy details are required where a Council has material sale and leaseback assets.

xix) **Disposals and Non-Current Assets Held for Sale**

When it becomes probable that the carrying amount of an asset will be recovered principally through a sale transaction rather than through its continuing use, it is reclassified as an Asset Held for Sale. The asset is revalued immediately before reclassification and then carried at the lower of this amount and fair value less costs to sell. Where there is a subsequent decrease to fair value less costs to sell, the loss is posted to the Other Operating Expenditure line in the Comprehensive Income and Expenditure Statement. Gains in fair value are recognised only up to the amount of any previously recognised losses in the Surplus or Deficit on the Provision of Services. Depreciation is not charged on Assets Held for Sale.

If assets no longer meet the criteria to be classified as assets held for sale, they are reclassified back to non-current assets and valued at the lower of its carrying amount before they were classified as held for sale: adjusted for depreciation, amortisation or revaluations that would have been recognised had they not been classified as held for sale, and their recoverable amount at the date of the decision not to sell.

Additional policy detail required where a Council is carrying a disposal group as an Asset Held for Sale.

Assets that are to be abandoned or scrapped are not reclassified as assets held for sale.

When an asset is disposed of, or decommissioned, the carrying amount of the asset in the Balance Sheet (whether property, plant and equipment or assets held for sale) is written off to the Other Operating Expenditure line in the Comprehensive Income and Expenditure Statement as part of the gain or loss on disposal. Receipts from disposals (if any) are credited to the same line in the Comprehensive Income and Expenditure Statement also as part of the gain or loss on disposal (i.e. netted off against the carrying value of the asset at the time of disposal). Any revaluation gains accumulated for the asset in the Revaluation Reserve are transferred to the Capital Adjustment Account.

Amounts received for a disposal are categorised as capital receipts and credited to the Capital Receipts Reserve. Receipts are appropriated to the Reserve from the General Fund Balance in the Movement in Reserves Statement.

The written-off value of disposals is not a charge against district rates, as the cost of non-current assets is fully provided for under separate arrangements for capital financing. Amounts are appropriated to the Capital Adjustment Account from the General Fund Balance in the Movement in Reserves Statement.

xx) **Overheads and Support Services**

The costs of overheads and support services are charged to service segments in accordance with the Council's arrangements for accountability and financial performance.

xxi) **Property, Plant and Equipment**

Assets that have physical substance and are held for use in the production or supply of goods or services, for rental to others, or for administrative purposes and that are expected to be used during more than one financial year are classified as Property, Plant and Equipment.

Recognition

Expenditure on the acquisition, creation or enhancement of property, plant and equipment is capitalised on an accruals basis, provided that it is probable that the future economic benefits or service potential associated with the item will flow to the Council and the cost of the item can be measured reliably. Expenditure that maintains but does not add to an asset's potential to deliver future economic benefits or service potential (i.e. repairs and maintenance) is charged as an expense when it is incurred.

Measurement

Assets are initially measured at cost, comprising:

- the purchase price
- any costs attributable to bringing the asset to the location and condition necessary for it to be capable of operating in the manner intended by management
- the initial estimate of the costs of dismantling and removing the item and restoring the site on which it is located

The Council does not capitalise borrowing costs incurred whilst assets are under construction.

The cost of assets acquired other than by purchase is deemed to be its fair value, unless the acquisition does not have commercial substance (i.e. it will not lead to a variation in the cash flows of the Council). In the latter case, where an asset is acquired via an exchange, the cost of the acquisition is the carrying amount of the asset given up by the Council.

Donated assets are measured initially at fair value. The difference between fair value and any consideration paid is credited to the Taxation and Non-Specific Grant Income line of the Comprehensive Income and Expenditure Statement, unless the donation has been made conditionally. Until conditions are satisfied, the gain is held in the Donated Assets Account. Where gains are credited to the Comprehensive Income and Expenditure Statement, they are reversed out of the General Fund Balance to the Capital Adjustment Account in the Movement in Reserves Statement.

Assets are then carried in the Balance Sheet using the following measurement bases:

- infrastructure, community assets and assets under construction – depreciated historical cost
- surplus assets – the current value measurement base is fair value, estimated at highest and best use from a market participant's perspective
- all other assets – fair value, determined as the amount that would be paid for the asset in its existing use (existing use value – EUV)

Where there is no market-based evidence of fair value because of the specialist nature of an asset, depreciated replacement cost is used as an estimate of fair value.

Assets included in the Balance Sheet at current value are revalued sufficiently regularly to ensure that their carrying amount is not materially different from their current value at the year-end, but as a minimum every five years. Increases in valuations are matched by credits to the Revaluation Reserve to recognise unrealised gains. [Exceptionally, gains might be credited to the Comprehensive Income and Expenditure Statement where they arise from the reversal of a loss previously charged to a service.]

The Revaluation Reserve contains revaluation gains recognised since 1 April 2008 only, the date of its formal implementation. Gains arising before that date have been consolidated into the Capital Adjustment Account.

Impairment

Assets are assessed at each year-end as to whether there is any indication that an asset may be impaired. Where indications exist and any possible differences are estimated to be material, the recoverable amount of the asset is estimated and, where this is less than the carrying amount of the asset, an impairment loss is recognised for the shortfall.

Where impairment losses are identified, they are accounted for by:

- a. where there is a balance of revaluation gains for the asset in the Revaluation Reserve, the carrying amount of the asset is written down against that balance (up to the amount of the accumulated gains),
- b. where there is no balance in the Revaluation Reserve or an insufficient balance, the carrying amount of the asset is written down against the relevant service line(s) in the Comprehensive Income and Expenditure Statement.

Where an impairment loss is reversed subsequently, the reversal is credited to the relevant service line(s) in the Comprehensive Income and Expenditure Statement, up to the amount of the original loss, adjusted for depreciation that would have been charged if the loss had not been recognised.

Depreciation

Depreciation is provided for on all property, plant and equipment assets by the systematic allocation of their depreciable amounts over their useful lives. An exception is made for assets without a determinable finite useful life (i.e. freehold land and certain Community Assets) and assets that are not yet available for use (i.e. assets under construction).

Depreciation is calculated on the following bases:

- dwellings and other buildings - straight-line allocation over the useful life of the property as estimated by the valuer
- vehicles, plant, furniture and equipment - a percentage of the value of each class of assets in the Balance Sheet, as advised by a suitably qualified officer
- infrastructure - straight line allocation over 10 - 54 years

A full year's depreciation is charged in the year of acquisition and none in the year of disposal.

Componentisation

Where an item of Property, Plant and Equipment asset has major components whose cost is significant in relation to the total cost of the item, the components are depreciated separately.

Revaluations

Revaluation gains are also depreciated, with an amount equal to the difference between current value depreciation charged on assets and the depreciation that would have been chargeable based on their historical cost being transferred each year from the Revaluation Reserve to the Capital Adjustment Account.

The Council is one of the parties to the successful legal action (October 2020), taken against HMRC, that charges paid since 2006 by members of the public for access to sports, recreation and leisure facilities provided by NI Councils were outside the scope of the VAT regime and that the VAT should be repaid. The Council understands that HMRC is considering the implications of the judgement and the outcome of which will be reported to the Council in due course. An asset is not included within the Statement of Accounts as the amount of the asset cannot be deemed virtually certain

Valuations of Land and Buildings are carried out externally by Land and Property Services (LPS), in accordance with the methodologies and bases for estimation set out in the professional standards of the Royal Institution of Chartered Surveyors (RICS). As at the valuation date, LPS considers that due to the COVID-19 pandemic, there is a shortage of reliable market evidence for comparison purposes, to inform opinions of value. Therefore, the valuations provided by LPS were reported on the basis of 'material valuation uncertainty' as per VPS 3 and VPGA 10 of the RICS Global Standards. Consequently, less certainty, and a higher degree of caution, should be attached to the valuations than would normally be the case. However, LPS advised that their material uncertainty clause serves as a precaution and does not invalidate the valuation.

xxii) **Heritage Assets**

Heritage Assets are those assets that are intended to be preserved in trust for future generations because of their cultural, environmental or historic associations. They would be held by this authority in pursuit of our overall objectives in relation to the maintenance of heritage.

The carrying amounts of heritage assets are reviewed where there is evidence of impairment for heritage assets, e.g. where an item has suffered physical deterioration or breakage or where doubts arise as to its authenticity. Any impairment is recognised and measured in accordance with the Council's general policy on impairment.

At the end of this reporting period the Council holds £1.18m Heritage Assets. These were mainly museum collections, paintings, books, sculptures and other artefacts. The value was determined by the services of an external valuer. Further information is shown in Note 11f.

xxiii) **Provisions**

Provisions are made where an event has taken place that gives the Council a legal or constructive obligation that probably requires settlement by a transfer of economic benefits or service potential, and a reliable estimate can be made of the amount of the obligation. For instance, the Council may be involved in a court case that could eventually result in the making of a settlement or the payment of compensation.

Provisions are charged as an expense to the appropriate service line in the Comprehensive Income and Expenditure Statement in the year that the Council becomes aware of the obligation, and measured at the best estimate at the balance sheet date of the expenditure required to settle the obligation, taking into account relevant risks and uncertainties.

When payments are eventually made, they are charged to the provision carried in the Balance Sheet. Estimated settlements are reviewed at the end of each financial year – where it becomes less than probable that a transfer of economic benefits will now be required (or a lower settlement than anticipated is made), the provision is reversed and credited back to the relevant service.

Where some or all of the payment required to settle a provision is expected to be recovered from another party (e.g. from an insurance claim), this is only recognised as income for the relevant service if it is virtually certain that reimbursement will be received if the Council settles the obligation.

xxiv) **Reserves**

The Council sets aside specific amounts as reserves for future policy purposes or to cover contingencies. Reserves are created by transferring amounts out of the General Fund Balance. When expenditure to be financed from a reserve is incurred, it is charged to the appropriate service in that year against the Surplus or Deficit on the Provision of Services in the Comprehensive Income and Expenditure Statement. The reserve is then transferred back into the General Fund Balance so that there is no net charge against District Rates for the expenditure.

Certain reserves are kept to manage the accounting processes for non-current assets, financial instruments, retirement benefits and employee benefits and do not represent usable resources for the Council – these reserves are explained in the relevant note to the accounts.

xxv) **Charges to Revenue for Non-Current Assets**

Services, support services and trading accounts are debited with the following amounts to record the cost of holding non-current assets during the year:

- depreciation attributable to the assets used by the relevant service
- revaluation and impairment losses on assets used by the service where there are no accumulated gains in the Revaluation Reserve against which the losses can be written off
- amortisation of intangible fixed assets attributable to the service.

The Council is not required to raise District Rates to cover depreciation, revaluation and impairment losses or amortisations. However, it is required to make an annual contribution from revenue to contribute towards the reduction in its overall borrowing requirement [equal to either an amount calculated on a prudent basis determined by the Council in accordance with statutory guidance]. Depreciation, revaluation and impairment losses and amortisation are therefore replaced by the contribution in the General Fund Balance [minimum revenue provision (MRP)] or the Statutory Repayment of Loans Fund Advances], by way of an adjusting transaction with the Capital Adjustment Account in the Movement in Reserves Statement for the difference between the two.

xxvi) **Revenue Expenditure Funded from Capital under Statute**

Expenditure incurred during the year that may be capitalised under statutory provisions but that does not result in the creation of a non-current asset has been charged as expenditure to the relevant service in the Comprehensive Income and Expenditure Statement in the year. Where the Council has determined to meet the cost of this expenditure from existing capital resources or by borrowing, a transfer in the Movement in Reserves Statement from the General Fund Balance to the Capital Adjustment Account then reverses out the amounts charged, so that there is no impact on the level of District Rates.

xxvii) **Value Added Tax**

VAT payable is included as an expense only to the extent that it is not recoverable from Her Majesty's Revenue and Customs. VAT receivable is excluded from income.

xxviii) **Fair Value Measurement**

The Council measures some of its non-financial assets such as surplus assets and investment properties and some of its financial instruments such as equity shareholdings [other financial instruments as applicable] at fair value at each reporting date. Fair value is the price that would be received to sell an asset or paid to transfer a liability in an orderly transaction between market participants at the measurement date. The fair value measurement assumes that the transaction to sell the asset or transfer the liability takes place either:

- a) in the principal market for the asset or liability, or
- b) in the absence of a principal market, in the most advantageous market for the asset or liability.

The Council measures the fair value of an asset or liability using the assumptions that market participants would use when pricing the asset or liability, assuming that market participants act in their economic best interest.

When measuring the fair value of a non-financial asset, the Council takes into account a market participant's ability to generate economic benefits by using the asset in its highest and best use or by selling it to another market participant that would use the asset in its highest and best use.

The Council uses valuation techniques that are appropriate in the circumstances and for which sufficient data is available, maximising the use of relevant observable inputs and minimising the use of unobservable inputs.

Inputs to the valuation techniques in respect of assets and liabilities for which fair value is measured or disclosed in the Council's financial statements are categorised within the fair value hierarchy, as follows:

- * Level 1 – quoted prices (unadjusted) in active markets for identical assets or liabilities that the authority can access at the measurement date
- * Level 2 – inputs other than quoted prices included within Level 1 that are observable for the asset or liability, either directly or indirectly
- * Level 3 – unobservable inputs for the asset or liability.

b Accounting Standards That Have Been Issued but Have Not Yet Been Adopted

The Code of Practice on Local Authority Accounting in the United Kingdom (the Code) requires that Council discloses information relating to the expected impact of an accounting change that will be required by a new standard that has been issued but not yet adopted.

For 2019/20 the following accounting standards have been issued but not yet adopted within the Code of Practice on Local Authority Accounting.

Amendments to IAS28 Investments in Associates and Joint Ventures
Annual improvements to IFRS Standards 2015-2017 Cycle
Amendments to IAS 19 Employee Benefits: Plan Amendment, Curtailment or Settlement.

It is not anticipated that these accounting changes will impact on the financial statements.

In addition, the 2021/22 Code is adopting IFRS 16 Leases, which will apply from 1 April 2021. This was originally to be introduced in 2020/21 but has been deferred by CIPFA in line with the governments Financial Reporting Advisory Boards's proposals for central government departments.

c Critical Judgements in Applying Accounting Policies

At 31 March 2020 Mid and East Antrim Borough Council has not identified any areas that require critical judgements.

d Assumptions Made About the Future and Other Major Sources of Estimation Uncertainty

The Statement of Accounts contains estimated figures that are based on assumptions made by the Council about the future or that are otherwise uncertain. Estimates are made taking into account historical experience, current trends and other relevant factors. However, because balances cannot be determined with certainty, actual results could be materially different from the assumptions and estimates.

The items in the Council's Balance Sheet at 31 March 2020 for which there is a significant risk of material adjustment in the forthcoming financial year are as follows:

i) Property, Plant and Equipment

Assets are depreciated over useful lives that are dependent on assumptions about the level of repairs and maintenance that will be incurred in relation to individual assets. The current economic climate makes it uncertain that the Council will be able to sustain its current spending on repairs and maintenance, bringing into doubt the useful lives assigned to assets.

If the useful life of assets is reduced, depreciation increases and the carrying amount of the assets falls.

ii) Pension Liability

Estimation of the net liability to pay pensions depends on a number of complex judgements relating to the discount rate used, the rate at which salaries are projected to increase, changes in retirement ages, mortality rates and expected returns on pension fund assets. A firm of consulting actuaries is engaged to provide the Council with expert advice about the assumptions to be applied.

iii) Third Party Investments

The Council administers investments for third parties outside the organisation. These investments are not included in the accounts of Mid and East Antrim Borough Council (See Note 16 for further details).

2

a Expenditure and Funding Analysis

The Expenditure and Funding Analysis shows how annual expenditure is used and funded from resources (government grants, rents, council tax and business rates) by local authorities in comparison with those resources consumed or earned by authorities in accordance with generally accepted accounting practices. It also shows how this expenditure is allocated for decision making purposes between the council's directorates. Income and expenditure accounted for under generally accepted accounting practices is presented more fully in the Comprehensive Income and Expenditure Statement.

	2019/20			2018/19		
	Net Expenditure Chargeable to the General Fund	Adjustments	Net Expenditure in the Comprehensive Income and Expenditure Statement	Restated Net Expenditure Chargeable to the General Fund	Restated Adjustments	Restated Net Expenditure in the Comprehensive Income and Expenditure Statement
	£	£	£	£	£	£
Chief Executive	974,018	(112,996)	1,087,014	(97,006)	(1,416,804)	1,319,798
Support Services	10,397,353	5,073,123	5,324,230	13,673,023	4,745,579	8,927,444
Community	6,548,082	(4,395,957)	10,944,039	6,081,067	(4,302,909)	10,383,976
Operations	22,014,942	(4,829,032)	26,843,974	22,205,924	(5,150,710)	27,356,634
Development	6,908,033	(2,655,776)	9,563,809	5,107,245	(6,639,980)	11,747,225
Corporate Services	5,217,960	(1,013,828)	6,231,788	4,190,918	(904,859)	5,095,777
Net Cost of Services	52,060,388	(7,934,466)	59,994,854	51,141,171	(13,669,483)	64,830,854
Other Income and Expenditure	(50,553,028)	(130,307)	(50,422,721)	(51,549,317)	(271,230)	(51,278,087)
Surplus or Deficit	1,507,360	(8,064,773)	9,572,133	(388,146)	(13,940,913)	13,552,767
Opening General Fund			4,200,733			4,094,437
Surplus/ (Deficit) on General Fund Balance In Year			(1,507,360)			388,146
Transfers to / from Unusable Reserves						
Transfers to / from Usuable Reserves			1,526,062			(281,850)
Closing General Fund			4,219,435			4,200,733

2

b

Note to the Expenditure and Funding Analysis

This note provides a reconciliation of the main adjustments to Net Expenditure Chargeable to the General Fund to arrive at the amounts in the Comprehensive Income and Expenditure Statement. The relevant transfers between reserves are explained in the Movement in Reserves Statement.

**Adjustments between Funding and Accounting Basis
2019/20**

Adjustments from General Fund to arrive at the Comprehensive Income and Expenditure Statement Amounts	Adjustments for Capital Purposes	Net Change for the Pension Adjustments	Other Statutory Adjustments	Other non-statutory Adjustments	Total adjustments
£	£	£	£	£	£
Chief Executive	(102,959)	-	-	(10,037)	(112,996)
Support Services	(21,875)	(53,651)	5,150,278	(1,629)	5,073,123
Community	(3,374,278)	(988,845)	-	(32,834)	(4,395,957)
Operations	(3,724,522)	(1,077,174)	-	(27,336)	(4,829,032)
Development	(2,072,317)	(597,621)	-	14,162	(2,655,776)
Corporate Services	63,933	(1,084,709)	-	6,948	(1,013,828)
Net Cost of Services	(9,232,018)	(3,802,000)	5,150,278	(50,726)	(7,934,466)
Other Income and Expenditure from the Expenditure and Funding Analysis	819,693	(950,000)	-	-	(130,307)
Difference between General Fund surplus or deficit and Comprehensive Income and Expenditure Statement Surplus or Deficit on the Provision of Services	(8,412,325)	(4,752,000)	5,150,278	(50,726)	(8,064,773)

**Adjustments between Funding and Accounting Basis
2018/19**

Adjustments from General Fund to arrive at the Comprehensive Income and Expenditure Statement Amounts	Restated Adjustments for Capital Purposes	Restated Net Change for the Pension Adjustments	Restated Other Statutory Adjustments	Restated Other non-statutory Adjustments	Restated Total adjustments
£	£	£	£	£	£
Chief Executive	(269,856)	(1,148,209)	-	1,261	(1,416,804)
Support Services	(125,253)	(65,278)	4,929,322	6,788	4,745,579
Community	(2,564,208)	(1,734,553)	-	(4,148)	(4,302,909)
Operations	(3,450,806)	(1,655,793)	-	(44,111)	(5,150,710)
Development	(5,996,483)	(589,074)	-	(54,423)	(6,639,980)
Corporate Services	-	(907,093)	-	2,234	(904,859)
Net Cost of Services	(12,406,606)	(6,100,000)	4,929,322	(92,399)	(13,669,683)
Other Income and Expenditure from the Expenditure and Funding Analysis	653,770	(925,000)	-	-	(271,230)
Difference between General Fund surplus or deficit and Comprehensive Income and Expenditure Statement Surplus or Deficit on the Provision of Services	(11,752,836)	(7,025,000)	4,929,322	(92,399)	(13,940,913)

3 a Expenditure and Income Analysed by Nature

Expenditure		2019/20	2018/19
	Notes	£	£
Employee Benefits Expenses	7	28,408,462	26,754,349
Other Services Expenditure		39,648,277	45,285,227
Support Service Recharges		-	-
Depreciation, Amortisation, Impairment	11	8,205,480	7,580,751
Interest Payments	9	2,762,453	2,834,208
Gain on the Disposal of Assets	8	(45,821)	(136,821)
Other Expenditure		-	-
Total Expenditure		78,978,851	82,317,714

Income		2019/20	2018/19
	Notes	£	£
Fees, Charges and other service Income		(15,448,055)	(13,889,817)
Interest and Investment Income	9	(128,592)	(149,742)
District rate income	10	(48,239,908)	(48,162,515)
Government grants and Contributions	10	(5,590,163)	(6,562,873)
Support Service Income		-	-
Other Income		-	-
Total Income		(69,406,718)	(68,764,947)
(Surplus) or Deficit on the Provision of Services		9,572,133	13,552,767

4 **Adjustments between an Accounting Basis and Funding Basis under Regulations**
Amounts included in the Comprehensive Income and Expenditure Statement but required by statute to be excluded when
determining the Movement on the General Fund Balance for the year:

		2019/20	2018/19		
	Notes	£	£	£	£
Amounts included in the Comprehensive Income and Expenditure Statement but required by statute to be excluded when determining the Movement on the General Fund Balance for the year:					
Impairments (losses & reversals) of non-current assets		-		-	
Derecognition (other than disposal) of non-current assets	11	43,003		22,527	
Revaluation increases/decreases taken to Surplus/Deficit on the Provision of Services	11	(287,391)		3,902,040	
Depreciation charged in the year on non-current assets	11	8,205,480	7,961,092	7,580,751	11,505,318
Net Revenue expenditure funded from capital under statute	12		1,312,646		901,288
Carrying amount of non current assets sold	8	52,901		117,842	
Proceeds from the sale of PP&E, investment property and intangible assets	8a,25	(98,722)	(45,821)	(254,663)	(136,821)
Difference between finance costs calculated on an accounting basis and finance costs calculated in accordance with statutory requirements			-		-
Net charges made for retirement benefits in accordance with IAS 19	21		9,345,000		11,758,000
Direct revenue financing of Capital Expenditure	12,25		(41,720)		-
Capital Grants and Donated Assets Receivable and Applied in year	10		(683,910)		(369,669)
Capital Grants Receivable and Unapplied in year	10D		(89,962)		(147,280)
Rates Claw-Back Reserve			-		-
Adjustments in relation to Short-term compensated absences	24		62,391		104,313
Adjustments in relation to Lessor Arrangements			-		-
Landfill Regulations Reserve Adjustment			-		-
Provisions Discount Rate Reserve Adjustment	24		(11,665)		(11,914)
Statutory Provision for the financing of Capital Investment	23		(5,150,278)		(4,929,322)
Employers contributions payable to the NILGOSC and retirement benefits payable direct to pensioners	20		(4,593,000)		(4,733,000)
			8,064,773		13,940,913

Employers contributions payable to NILGOSC and the retirement benefits payable direct to pensioners figure of £4,593k (2018/19 £4,733k) as shown in note 4 excluded the following costs:

- Employers contributions payable to NICS - £338k (2018/19 £257k) in respect of planners
- Additional costs of early retirement pension paid to NILGOSC of £237k (2018/19 £733k)
- An increase of £9k (2018/19 £16k) re accumulated absences
- Employers contributions payable in respect of Councillors - £122k (2018/19 £115k) as included within note 7d.

b Net transfers (to)/from statutory and other earmarked reserves:					
	Notes	2019/20 £	2019/20 £	2018/19 £	2018/19 £
Capital Fund					
Interest		-	-	-	-
From Capital		-	-	-	-
Other	23	-	-	(700,000)	(700,000)
Renewal and Repairs Fund					
Interest		-	-	-	-
Other	27	-	-	-	-
Capital Receipts Reserve					
Interest		-	-	-	-
Other	27	-	-	-	-
Other Funds and earmarked reserves					
Interest		-	-	-	-
From Other funds		-	-	-	-
Other	23	1,526,062	1,526,062	418,150	418,150
Unusable reserves					
Capital Adjustment Account		-	-	-	-
			1,526,062		(281,850)

5 Cost of Services on Continuing Operations

a General power of competence

Prior to Local Government Reform on 1st April 2015, expenditure for special purposes was limited under Section 40 of the Local Government Finance Act (Northern Ireland) 2011. This section was repealed by Schedule 10 of the Local Government Act (Northern Ireland) 2014.

Under Section 79 of the Local Government Act (Northern Ireland) 2014, the Council has the power to do anything that individuals generally may do. Councils have the power to do this with or without charge. The power of competence is not limited to benefitting the area or its residents nor is it limited by existing powers.

The actual expenditure under the power of competence amounted to £0 during 2019/20 (£0 in 2018/19).

b External Audit Fees

The Council's external auditors has incurred the following costs relating to the annual audit of the Statement of Accounts, certification of grant claims and other services provided by the Council's external auditors.

	2019/20 £	2018/19 £
External Audit Fees	58,500	57,500
Other Fees	22,000	23,101
Over accrual of Audit Fee	-	(2,500)
	80,500	78,101

The other fees of £22,000 (2018/19 £23,101) were incurred in respect of performance audit services provided by the appointed auditor.

6 Operating and Finance Leases

Council as Lessor

a Finance Leases (Council as lessor)

The Council has a number of finance leases. However, the present value of the lease payments receivable under these arrangements are not material.

b Operating Leases (Council as lessor)

The Council leases out property and equipment under operating leases for the following purposes:

- for the provision of community services, such as sports facilities, tourism services and community centres
- for economic development purposes to provide suitable affordable accommodation for local businesses.

Rental income recognised in the Comprehensive Income and Expenditure Statement in the current year amounts to £333,531 (2018/19 £277,566). No Contingent rents were recognised.

The lease contracts are all non-cancellable and do not include an extension option. The lease terms are between 0 and 125 years. Future lease income is set out below:

	31st March 2020	31st March 2019
	£	£
Not later than 1 year	230,967	288,943
Later than 1 year and no later than 5 years	301,805	350,354
Later than 5 years	2,163,712	2,422,974
	2,696,484	3,062,271

Council as Lessee

c Finance Leases (Council as lessee)

Council has now repaid all vehicles held under finance leases these vehicles are included within Vehicles, Plant and Equipment.

d Operating Leases (Council as lessee)

The Council has acquired its office photocopiers, printers and motor vehicles by entering into operating leases, with typical lives of 3/5 years.

The future minimum lease payments due under non-cancellable leases in future years are:

	31st March 2020	31st March 2019
	£	£
Not later than 1 year	290,680	234,180
Later than 1 year and no later than 5 years	750,259	303,669
Later than 5 years	1,966,251	1,484,856
	3,007,190	2,022,705

The expenditure charged to the Directorates in the Comprehensive Income and Expenditure Statement during the year in relation to these leases was:

	2019/20	2018/19
	£	£
Minimum lease payments	330,577	274,131
Contingent rentals	-	-
Less: Sublease payments receivable	-	-
Total	330,577	274,131

7 Employee Costs and Member Allowances

a Staff Costs

	2019/20	2018/19
	£	£
Salaries and Wages	22,105,088	20,704,001
Employers NIC	2,006,000	1,967,553
Employers Superannuation	4,297,374	4,082,795
Total staff costs	28,408,462	26,754,349

In addition, agency costs during the year amounted to £4,889,325 (2018/19 £4,617,791).

The Council's current contribution rate to NILGOSC scheme is 20% (2018/19 19%) plus a Deficit Recovery Contribution of £276,100 (2018/19 £276,100).

At last actuarial valuation dated 31 March 2016 the funds assets were sufficient to meet 96% of liabilities accrued up to that date.

Average Number of Employees - where FTE represents fulltime equivalent employees

b Average Number of Employees		2019/20	2018/19
		FTE	FTE
Chief Executive		3	4
Support Services		69	63
Community		171	159
Operations		239	255
Development		155	148
Corporate Services		42	39
Total Number		679	668

	2019/20	2018/19
	Actual Numbers	Actual Numbers
Full-time numbers employed	594	563
Part-time numbers employed	146	170
Total Number	740	733

c Senior Employees' Remuneration		2019/20	2018/19
		£	£
£50,001 to £60,000		13	14
£60,001 to £70,000		6	6
£70,001 to £80,000		3	3
£80,001 to £90,000		6	2
£90,001 to £100,000		3	-
£100,001 to £110,000		-	-
£110,001 to £120,000		3	1
Total Number		34	26

These figures are slightly higher due to completion of the single status exercise and some exit packages.

d Members' Allowances		2019/20	2018/19
		£	£
Salaries		-	-
Basic allowance		602,761	588,021
Mayor's & Deputy Mayor's Allowance		18,918	13,598
Special Responsibility Allowances		53,103	55,632
Dependents' carers allowance		601	1,418
Employer costs		168,020	162,417
Mileage		35,675	46,355
Conferences and Courses		4,930	2,631
Travel & Subsistence Costs		9,758	11,057
Miscellaneous Costs		-	-
Severance Payments		-	-
Total		893,766	881,129

e Northern Ireland Civil Service Pension Arrangements

As a result of Reform on 1 April 2015, staff transferred from Central Government to the Council are members of the Northern Ireland Civil Service Pension Scheme.

The Northern Ireland Civil Service Pension arrangements are unfunded multi-employer defined benefit schemes but the Department for Communities is unable to identify its share of the underlying assets and liabilities.

The most up to date actuarial valuation was carried out as at 31 March 2016. This valuation was then reviewed by the Scheme Actuary and updated to reflect current conditions and rolled forward to the reporting date of the DOF Superannuation and Other Allowances Resource Accounts as at 31 March 2020.

For 2019/20, employers' contributions of £338,350 were payable to the NICS pension arrangements at one of three rates in the range 28.7% to 34.2% of pensionable pay, based on salary bands.

None of Mid and East Antrim Borough Council employees have opted to open a partnership pension account.

8 Other Operating Income & Expenditure

a Surplus/Deficit on Non-Current Assets (excl Investment Properties)

	2019/20	2018/19
	£	£
Proceeds from sale	(98,722)	(254,663)
Carrying amount of non-current assets sold (excl Investment Properties)	52,901	117,842
	(45,821)	(136,821)

b Other Operating Income/ Expenditure

	2019/20	2018/19
	£	£
Income	-	-
Expenditure	-	-
	-	-

Other Operating Expenditure	2019/20	2018/19
	£	£
(Surplus) / Deficit on Non Current Assets	(45,821)	(136,821)
Other Operating (Income) / Expenditure	-	-
	(45,821)	(136,821)

9 Financing and Investment Income and Expenditure

a Interest Payable and Similar Charges

	2019/20	2018/19
	£	£
Lease/hire purchase interest	-	-
Bank interest	-	-
Government Loan Interest	2,680,561	2,789,666
Commercial Loan Interest	-	-
Other interest - Short Term Loan Interest	81,892	44,542
	2,762,453	2,834,208

b Interest and Investment Income

	2019/20	2018/19
	£	£
Bank Interest	-	-
Employee car loan interest	-	-
NIHE Loan interest receivable	76,170	79,033
<i>Investment income on Fund Balances</i>		
Capital Fund	-	-
Repairs & Renewals Fund	-	-
Other Funds	-	-
Other Investment income	52,422	70,709
	<u>128,592</u>	<u>149,742</u>

c Pensions interest costs and expected return on pensions assets

	2019/20	2018/19
	£	£
Net interest on the net defined benefit liability (asset)	950,000	925,000
	<u>950,000</u>	<u>925,000</u>

d Surplus/ (Deficit) on trading operations

	2019/20	2018/19
	£	£
Income from trading	-	-
Expenditure	-	-
(Surplus)/Deficit for the year	<u>-</u>	<u>-</u>

e Income, Expenditure and changes in Fair Value of Investment Properties

	2019/20	2018/19
	£	£
Income/Expenditure from Investment Properties:		
Income including rental income	(71,239)	(57,678)
Expenditure	4,482	11,105
<i>Net income from investment properties</i>	<i>(66,757)</i>	<i>(46,573)</i>
Surplus/deficit on sale of Investment Properties		
Proceeds from sale	-	-
Carrying amount of investment properties sold	-	-
<i>(Surplus)/deficit on sale of Investment Properties:</i>	<i>-</i>	<i>-</i>
Changes in Fair Value of Investment Properties		
	(63,933)	21,229
	<u>(130,690)</u>	<u>(25,344)</u>

Financing and Investment Income and Expenditure

	2019/20			2018/19		
	Gross Expenditure	Gross Income	Net Expenditure	Gross Expenditure	Gross Income	Net Expenditure
	£	£	£	£	£	£
Interest Payable and Similar Charges	2,762,453	-	2,762,453	2,834,208	-	2,834,208
Interest and Investment Income	-	(128,592)	(128,592)	-	(149,742)	(149,742)
Pensions interest cost	950,000	-	950,000	925,000	-	925,000
Surplus/(Deficit) on trading operations	-	-	-	-	-	-
Other investment income	4,482	(71,239)	(66,757)	11,105	(57,678)	(46,573)
Changes in Fair Value of Investment Properties	-	(63,933)	(63,933)	21,229	-	21,229
	<u>3,716,935</u>	<u>(263,764)</u>	<u>3,453,171</u>	<u>3,791,542</u>	<u>(207,420)</u>	<u>3,584,122</u>

10 Taxation and Non Specific Grant Income

a Revenue Grants

	2019/20	2018/19
	£	£
General	(4,816,291)	(6,045,924)
Other	-	-
	(4,816,291)	(6,045,924)

b Revenue Grants - Unapplied

	2019/20	2018/19
	£	£
Government & Other Grants - Conditions met and applied in year	-	-
Other	-	-
	-	-

c Capital Grants and Donated Assets - Applied

	2019/20	2018/19
	£	£
Government & Other Grants - Conditions met and applied in year	(683,910)	(369,669)
Government & Other Grants - Transfer from receipts in advance	-	-
Donated Assets - Conditions met	-	-
Donated Assets - Transfer from donated assets creditor	-	-
	(683,910)	(369,669)

d Capital Grants - Unapplied

	2019/20	2018/19
	£	£
Government & Other Grants - Conditions met and not applied in year	(89,962)	(147,280)
Other	-	-
	(89,962)	(147,280)

e District Rates

	2019/20	2018/19
	£	£
Current year	(48,239,908)	(48,162,515)
Finalisation - previous year	-	-
Transitional Relief	-	-
Finalisation - other years	-	-
	(48,239,908)	(48,162,515)

Taxation and Non Specific Grant Income	2019/20	2018/19
	£	£
District Rate Income	(48,239,908)	(48,162,515)
Revenue Grants	(4,816,291)	(6,045,924)
Capital Grants and Contributions	(773,872)	(516,949)
	(53,830,071)	(54,725,388)

Mid and East Antrim Borough Council
Notes to the Financial Statements
FOR THE YEAR ENDED 31 MARCH 2020

11 a Long - Term Assets - Current Year

Cost or Valuation	Land	Buildings	Infrastructure Assets	Coastal Paths	Vehicles, Plant & Equipment	Community Assets	PP&E Under Construction	Surplus Assets	Total PP&E	Heritage Assets	Non operational assets	Assets Held for Resale	TOTAL
£	£	£	£	£	£	£	£	£	£	£	£	£	£
Balance as at 1 April 2019	37,170,404	159,233,431	4,371,431	5,618,990	13,525,118	245,718	1,275,181	22,000	221,462,273	1,181,473	402,747	-	223,046,493
Adjustments between cost/value & depreciation/impairment	-	-	-	-	-	-	-	-	-	-	-	-	-
Balance as at 1 April 2019	37,170,404	159,233,431	4,371,431	5,618,990	13,525,118	245,718	1,275,181	22,000	221,462,273	1,181,473	402,747	-	223,046,493
Additions	6,021	1,797,513	-	-	1,882,776	114,769	4,266,232	-	8,067,311	-	-	-	8,067,311
Donations	-	-	-	-	-	-	-	-	-	-	-	-	-
Revaluation increases/ (decreases) to Revaluation Reserve	45,002	1,357,168	-	121,105	-	-	-	-	1,523,275	-	-	-	1,523,275
Revaluation increases/ (decreases) to Surplus or Deficit on the Provision of Services	(5,021)	11,963	-	-	-	-	-	-	6,942	-	-	-	6,942
Impairment to Surplus or Deficit on the Provision of Services	-	-	-	-	-	-	-	-	-	-	-	-	-
Derecognition - Disposals	(8,002)	-	-	-	(863,299)	-	-	-	(871,301)	-	-	-	(871,301)
Derecognition - Other	-	-	-	-	-	-	(43,003)	-	(43,003)	-	-	-	(43,003)
Reclassifications & Transfers	-	375,923	-	-	11,000	-	(473,021)	-	(86,098)	-	-	-	(86,098)
Reclassified to(-) / from(+) Held for Sale	-	-	-	-	-	-	-	-	-	-	-	-	-
Balance as at 31 March 2020	37,208,404	162,775,998	4,371,431	5,740,095	14,555,595	360,487	5,025,389	22,000	230,059,399	1,181,473	402,747	-	231,643,619

Depreciation and Impairment	Land	Buildings	Infrastructure Assets	Coastal Paths	Vehicles, Plant & Equipment	Community Assets	PP&E Under Construction	Surplus Assets	Total PP&E	Heritage Assets	Non operational assets	Assets Held for Resale	TOTAL
	£	£	£	£	£	£	£	£	£	£	£	£	£
Balance as at 1 April 2019	-	663,873	2,418,071	-	10,466,302	-	-	-	13,548,246	-	-	-	13,548,246
Adjustments between cost/value & depreciation/impairment	-	-	-	-	-	-	-	-	-	-	-	-	-
Balance as at 1 April 2019	-	663,873	2,418,071	-	10,466,302	-	-	-	13,548,246	-	-	-	13,548,246
Depreciation Charge	-	6,929,264	156,775	124,519	994,922	-	-	-	8,205,480	-	-	-	8,205,480
Depreciation written out on Revaluation Reserve	-	(6,608,471)	-	(124,519)	-	-	-	-	(6,732,990)	-	-	-	(6,732,990)
Depreciation written out on Revaluation taken to Surplus or Deficit on the Provision of Services	-	(216,516)	-	-	-	-	-	-	(216,516)	-	-	-	(216,516)
Impairment losses/reversals to Revaluation Reserve	-	-	-	-	-	-	-	-	-	-	-	-	-
Impairment losses/reversals to Surplus or Deficit on the Provision of Services	-	-	-	-	-	-	-	-	-	-	-	-	-
Derecognition - Disposals	-	-	-	-	(818,400)	-	-	-	(818,400)	-	-	-	(818,400)
Derecognition - Other	-	-	-	-	-	-	-	-	-	-	-	-	-
Reclassifications & Transfers	-	-	-	-	-	-	-	-	-	-	-	-	-
Eliminated on reclassification to Held for Sale	-	-	-	-	-	-	-	-	-	-	-	-	-
Balance as at 31 March 2020	-	768,150	2,574,846	-	10,642,824	-	-	-	13,985,820	-	-	-	13,985,820
Balance as at 31 March 2020	37,208,404	162,007,848	1,796,585	5,740,095	3,912,771	360,487	5,025,389	22,000	216,073,579	1,181,473	402,747	-	217,657,799

b Long - Term Assets - Comparative Year

Cost or Valuation	Land	Buildings	Infrastructure Assets	Coastal Paths	Vehicles, Plant & Equipment	Community Assets	PP&E Under Construction	Surplus Assets	Total PP&E	Heritage Assets	Non operational assets	Assets Held for Resale	TOTAL
	£	£	£	£	£	£	£	£	£	£	£	£	£
Balance as at 1 April 2018	37,319,454	164,564,648	4,371,431	-	13,756,794	214,328	4,142,379	22,000	224,391,034	1,181,473	402,747	30,000	226,005,254
Adjustments between cost/value & depreciation/impairment	-	-	-	-	-	-	-	-	-	-	-	-	-
Balance as at 1 April 2018	37,319,454	164,564,648	4,371,431	-	13,756,794	214,328	4,142,379	22,000	224,391,034	1,181,473	402,747	30,000	226,005,254
Additions	-	1,560,726	-	432,305	1,179,938	31,390	813,975	-	4,018,334	-	-	-	4,018,334
Donations	-	-	-	-	-	-	-	-	-	-	-	-	-
Revaluation increases/decreases to Revaluation Reserve	280,500	(1,005,177)	-	(123,833)	-	-	-	-	(848,510)	-	-	-	(848,510)
Revaluation increases/decreases to Surplus or Deficit on the Provision of Services	(83,050)	(462,813)	-	(3,733,182)	-	-	-	-	(4,279,045)	-	-	-	(4,279,045)
Impairment to Surplus or Deficit on the Provision of Services	-	-	-	-	-	-	-	-	-	-	-	-	-
Derecognition - Disposals	(16,500)	-	-	-	(1,411,614)	-	-	-	(1,428,114)	-	-	(30,000)	(1,458,114)
Derecognition - Other	-	-	-	-	-	-	(22,527)	-	(22,527)	-	-	-	(22,527)
Reclassifications & Transfers	(330,000)	(5,423,953)	-	9,043,700	-	-	(3,658,646)	-	(368,899)	-	-	-	(368,899)
Reclassified to(-) / from(+) Held for Sale	-	-	-	-	-	-	-	-	-	-	-	-	-
Balance as at 31 March 2019	37,170,404	159,233,431	4,371,431	5,618,990	13,525,118	245,718	1,275,181	22,000	221,462,273	1,181,473	402,747	-	223,046,493

Depreciation and Impairment	Land	Buildings	Infrastructure Assets	Coastal Paths	vehicles, Plant & Equipment	Community Assets	PP&E Under Construction	Surplus Assets	Total PP&E	Heritage Assets	Non operational Assets	Assets Held for Resale	TOTAL
	£	£	£	£	£	£	£	£	£	£	£	£	£
Balance as at 1 April 2018	-	443,632	2,261,208	-	11,051,079	-	-	-	13,755,919	-	-	-	13,755,919
cost/value & depreciation/impairment	-	-	-	-	-	-	-	-	-	-	-	-	-
Balance as at 1 April 2018	-	443,632	2,261,208	-	11,051,079	-	-	-	13,755,919	-	-	-	13,755,919
Depreciation Charge	-	6,433,504	156,863	234,889	755,495	-	-	-	7,580,751	-	-	-	7,580,751
Depreciation written out on Revaluation Reserve	-	(6,032,549)	-	(17,369)	-	-	-	-	(6,049,918)	-	-	-	(6,049,918)
Depreciation written out on Revaluation taken to Surplus or Deficit on the Provision of Services	-	(180,714)	-	(217,520)	-	-	-	-	(398,234)	-	-	-	(398,234)
Impairment losses/reversals to Revaluation Reserve	-	-	-	-	-	-	-	-	-	-	-	-	-
to Surplus or Deficit on the Provision of Services	-	-	-	-	-	-	-	-	-	-	-	-	-
Derecognition - Disposals	-	-	-	-	(1,340,272)	-	-	-	(1,340,272)	-	-	-	(1,340,272)
Derecognition - Other	-	-	-	-	-	-	-	-	-	-	-	-	-
Reclassifications & Transfers	-	-	-	-	-	-	-	-	-	-	-	-	-
Eliminated on reclassification to Held for Sale	-	-	-	-	-	-	-	-	-	-	-	-	-
Balance as at 31 March 2019	-	663,873	2,418,071	-	10,466,302	-	-	-	13,548,246	-	-	-	13,548,246
Net Book Values													
Balance as at 31 March 2019	37,170,404	158,569,558	1,953,360	5,618,990	3,058,816	245,718	1,275,181	22,000	207,914,027	1,181,473	402,747	-	209,498,247
Balance as at 31 March 2020	37,208,404	162,007,848	1,796,585	5,740,095	3,912,771	360,487	5,025,389	22,000	216,073,579	1,181,473	402,747	-	217,657,799

11 c Property, plant and equipment

Depreciation

The following useful lives and depreciation rates have been used in the calculation of depreciation:

- Buildings and Coastal paths - 30 - 50 years
- Vehicles, plant, and equipment - 3 - 7 years
- Infrastructure - 10 - 54 years

Effects of Changes in Estimates

There were no material changes in the accounting estimates for property, plant and equipment during the period.

Revaluations

A full revaluation exercise for Council's freehold properties was carried out as at 31 March 2017 by an independent valuer from Land and Property Services (LPS).

In accordance with the statements of asset valuation practice and guidance notes of the Royal Institute of Chartered Surveyors from 1 April 2017 the Council has operated a rolling programme for its revaluation of freehold and leasehold properties with approximately 20% of these assets being revalued by physical inspection each year and the remainder being revalued by desktop exercise. This revaluation was also carried out by an independent valuer from LPS.

The LPS valuations for 31 March 2020 are fully reflected in the closing carrying values of Land, Buildings, Investment Properties and Surplus Assets.

d Intangible Assets

The Council does not own any Intangible Assets.

e Investment Properties

The following items of income and expense have been accounted for in the Financing and Investment Income and Expenditure line in the Comprehensive Income and Expenditure Statement:

Investment Properties	31/03/2020	31/03/2019
	£	£
Rental Income from Investment Activities	71,239	57,678
Direct Operating expenses arising from investment properties	(4,482)	(11,105)
Net gain/(loss)	66,757	46,573

Gains or losses arising from changes in the fair value of the investment property are recognised in Surplus or Deficit on the Provision of Services – Financing and Investment Income and Expenditure line.

The following table summarises the movement in the fair value of investment properties over the year:

Investment Properties	2019/20	2018/19
	£	£
Balance at start of the year	1,190,842	843,172
Additions	-	-
Disposals	-	-
Net gains/losses from fair value adjustments	63,933	(21,229)
Transfers to/ from inventories	-	-
Transfers to/ from property, plant and equipment	86,098	368,899
Other changes	-	-
Balance at end of the year	1,340,873	1,190,842

Fair Value Hierarchy

Details of the Council's Investment Properties and information about the fair value hierarchy as at 31 March 2020 and 2019 are as follows

2019/20 Recurring fair value measurements using:	Quoted Prices in active markets for identical assets (Level 1)	Other significant observable inputs (Level 2)	Significant unobservable inputs (Level 3)	Fair value as at 31 March 2020
	£	£	£	£
Residential (market rental) properties	1,340,873	-	-	1,340,873
Office units	-	-	-	-
Commercial Units	-	-	-	-
Total	1,340,873	-	-	1,340,873

2018/19 Recurring fair value measurements using:	Quoted Prices in active markets for identical assets (Level 1)	Other significant observable inputs (Level 2)	Significant unobservable inputs (Level 3)	Fair value as at 31 March 2019
	£	£	£	£
Residential (market rental) properties	1,190,842	-	-	1,190,842
Office units	-	-	-	-
Commercial Units	-	-	-	-
Total	1,190,842	-	-	1,190,842

Transfers between levels of the fair value hierarchy

There were no transfers between Levels 1 and 2 during the year.

Valuation Techniques

There has been no change in the valuation techniques used during the year for Investment Properties.

Heritage Assets

Heritage Assets for Mid and East Antrim consist of the following for each legacy Council:

Ballymena Legacy Council - Museum Collection £95,000, Civic Regalia £65,000, Mace £2,000 and Artwork £19,175.

Carrickfergus Legacy Council - Paintings & Books £215,449, Sculptures £65,599 and other Artefacts £541,250.

Larne Legacy Council - Art Collection £113,750, Ceremonial Dress £35,340 and other Heritage assets £28,910.

Ballymena and Larne Heritage assets were valued by a fine art consultant - Ballymena's museum collection at 31 March 2012, Civic Regalia and Mace 31 March 2013 and Artworks 31 March 2017 whilst Larne's Heritage assets were valued at 31 March 2014 and a professional valuer carried out a comprehensive valuation of Carrickfergus's assets in January 2013.

g Assets Held for Sale

The Council does not have any Assets Held for Sale.

h Long-Term Assets - Leased Assets

Assets which Council financed through Long Term Leases are now fully repaid and held within Note 11 under Vehicles, Plant and Equipment.

I Fair Value Hierarchy for Surplus Assets

Details of the Council's surplus assets and information about the fair value hierarchy as at 31 March 2020 and 2019 are as

2019/20 Recurring fair value measurements using:	Quoted Prices in active markets for identical assets (Level 1)	Other significant observable inputs (Level 2)	Significant unobservable inputs (Level 3)	Fair value as at 31st March 2019
	£	£	£	£
Type 1	22,000	-	-	22,000
Type 2	-	-	-	-
Type 3	-	-	-	-
Total	22,000	-	-	22,000

2018/19 Recurring fair value measurements using:	Quoted Prices in active markets for identical assets (Level 1)	Other significant observable inputs (Level 2)	Significant unobservable inputs (Level 3)	Fair value as at 31st March 2018
	£	£	£	£
Type 1	22,000	-	-	22,000
Type 2	-	-	-	-
Type 3	-	-	-	-
Total	22,000	-	-	22,000

Transfers between levels of the fair value hierarchy

There were no transfers between Levels 1 and 2 during the year.

Highest and best use of surplus assets

In estimating the fair value of the Council's surplus assets, the highest and best use of the assets is their current use.

Valuation Techniques

There has been no change in the valuation techniques used during the year for surplus assets.

Valuation Process for Surplus Assets

Land and Property services have valued Mid and East Antrim's surplus assets using the highest and best use basis of valuation.

Valuations of Land and Buildings are carried out externally by Land and Property Services (LPS), in accordance with the methodologies and bases for estimation set out in the professional standards of the Royal Institution of Chartered Surveyors (RICS). As at the valuation date, LPS considers that due to the COVID-19 pandemic, there is a shortage of reliable market evidence for comparison purposes, to inform opinions of value. Therefore, the valuations provided by LPS were reported on the basis of 'material valuation uncertainty' as per VPS 3 and VPGA 10 of the RICS Global Standards. Consequently, less certainty, and a higher degree of caution, should be attached to the valuations than would normally be the case. However, LPS advised that their material uncertainty clause serves as a precaution and does not invalidate the valuation.

12 Capital Expenditure and Capital Financing

The total amount of capital expenditure incurred in the year is shown in the table below (including the value of assets acquired under finance leases and PFI contracts), together with the resources that have been used to finance it. Where capital expenditure is to be financed in future years by charges to revenue as assets are used by the Council, the expenditure results in an increase in the Capital Financing Requirement (CFR), a measure of the capital expenditure incurred historically by the Council that is yet to be financed. The CFR is analysed in the second part of this note.

Capital Expenditure		2019/20	2018/19
		£	£
Opening Capital Financing Requirement		66,984,964	67,572,486
Capital Investment			
Property, Plant and Equipment	11	8,067,311	4,018,334
Investment Properties		-	-
Intangible Assets		-	-
Revenue Expenditure Funded from Capital under Statute	4	1,312,646	901,288
Investments		-	-
Sources of Finance			
Capital Receipts		(216,222)	(137,163)
Government Grants and Other Contributions	10	(831,181)	(369,669)
Transfers from Earmarked Reserves		(772,158)	(70,990)
Sums set aside from Revenue:			
Direct Revenue Contributions		(41,720)	-
Minimum Revenue Provision		(5,150,278)	(4,929,322)
Closing Capital Financing Requirement		69,353,362	66,984,964
Explanation of Movements in Year		2019/20	2018/19
		£	£
Increase in underlying need to borrow		2,368,398	(587,522)
Assets acquired under finance leases		-	-
Assets acquired under PFI/PPP contracts		-	-
Increase/(decrease) in Capital Financing Requirement		2,368,398	(587,522)

13 Future Capital Commitments

Of the Capital Commitments disclosed below £568k (2019/20 £1,629k) relates to REFCUS expenditure

	Gross Cost	Grant Aid	Net Cost
	£	£	£
Schemes underway	17,286,205	2,418,738	14,867,467
Other Commitments	5,539,995	502,174	5,037,821
Total	22,826,200	2,920,912	19,905,288

14	Inventories	2019/20	2018/19
		£	£
	Bins	88,495	55,571
	Trading Outlets	67,028	80,092
	Stationery	20,571	16,052
	Other	149,731	134,232
	Total	325,825	285,947

The above figures are stated net of an obsolete provision of £17,149 (2018/19 £15,050).

15	Debtors	2019/20	2018/19
		£	£
a	Long Term Debtors		
	Government Departments	-	-
	Other Councils	-	-
	Public corporations and trading funds	-	-
	Bodies external to general government	-	-
	Employee car loans	3,361	5,194
	Revenue Grants	-	-
	Capital Grants	-	-
	Interest Receivable	-	-
	Capital Debtors	-	-
	Loans and advances	-	-
	Finance lease debtors	-	-
	Trade debtors	-	-
	NIHE Loans	1,110,351	1,206,342
	Landfill Asset	416,270	471,860
	Other	-	-
	Impairment of loans and receivables	-	-
	Contract Receivables	-	-
	Total Long-Term Debtors	1,529,982	1,683,396

b	Short Term Debtors	2019/20	2018/19
		£	£
	Government Departments	394,916	2,543,936
	Other Councils	26,838	81,406
	Public corporations and trading funds	-	-
	Bodies external to general government	53,377	90,486
	NIHE loans	95,991	89,789
	Employee car loans	1,833	1,833
	Revenue Grants	3,294,035	2,008,505
	Capital Grants	107,708	364,405
	Interest Receivable	7,396	13,323
	Capital Debtors	-	-
	Value Added Tax	1,265,572	1,400,874
	Prepayments	264,681	540,314
	Finance lease debtors	-	-
	Landfill asset	47,541	50,609
	Other	378,775	483,927
	Trade receivables	456,959	672,780
	Impairment loss - Trade receivables	(30,164)	(73,674)
	Contract Receivables	-	-
	Total Short-Term Debtors	6,365,458	8,248,513
	Total Debtors	7,895,440	9,951,909

16	Investments	2019/20	2018/19
		£	£
a	Long Term Investments		

The Council does not hold any long term investments.

b	Short-Term Investments	2019/20	2018/19
		£	£
	Investments - general	-	-
	Investments - deposits for landfill	2,095,312	2,163,763
	Investments - capital fund	-	-
	Investments - other	6,381,727	6,389,362
	Total Short-term Investments	8,477,039	8,553,125
	Analysed over:	2019/20	2018/19
		£	£
	Money market deposits	-	-
	Other deposits	8,477,039	8,553,125
	Total Short-term Investments	8,477,039	8,553,125
	Total Long Term and Short-term Investments	8,477,039	8,553,125

The Council administers third party investments totalling £304,117 (2018/19 £302,198), these values are not included in the accounts of Mid and East Antrim Borough Council.

The Legacy Larne Borough Council received a donation from Fort James Paper Mill to be used for the benefit of the people of Larne, at 31 March 2020 the balance on deposit was £2,198. (2018/19 £2,198).

It also had investments in the Northern Ireland Central Investment Fund for Charities of £34,348 (2018/19 £36,372) and a Charities Account of £14,949 (2018/19 £13,760).

The Legacy Carrickfergus Borough Council held an investment in the name of the Legg Trust Fund which now at 31 March 2020 has a balance of £251,627 (2018/19 £248,824).

Third Party Investments also include a Legacy Larne Council bank deposit for the benefit of various community groups £995 (2018/19 £1,043).

17 Borrowings			
a Short Term Borrowing			
		2019/20	2018/19
		£	£
Loans re-payable within one year		12,698,985	11,731,612
Finance Lease Principal		-	-
Total Short Term Borrowing		12,698,985	11,731,612
b Long Term Borrowing			
		2019/20	2018/19
		£	£
Between 1 and 2 years		3,125,591	3,061,520
Between 2 and 5 years		9,361,106	8,977,665
Between 5 and 10 years		15,148,422	14,486,942
In more than 10 years		25,232,593	24,540,578
Government Loans Fund		52,867,712	51,066,705
Total Borrowing		65,566,697	62,798,317
18 Creditors			
a Short Term Creditors			
		2019/20	2018/19
		£	£
Government Departments		832,414	569,744
Other Councils		78,027	82,870
Public corporations and trading funds		-	-
Bodies external to general government		219,353	322,210
Rates clawback		-	-
VAT		-	-
Remuneration due to employees		113,562	210,746
Accumulated Absences		620,386	557,995
Loan Interest Payable		462,738	444,846
Capital Creditors		679,435	195,613
Receipts in advance		258,708	408,778
Trade creditors		3,231,436	3,180,960
Other		53,700	53,802
Contract Payables		-	-
Total Short Term Creditors		6,549,759	6,027,564
b Long Term Creditors			
		2019/20	2018/19
		£	£
Other creditors falling due after more than one year:			
Government Departments		-	-
Other Councils		-	-
Public corporations and trading funds		-	-
Bodies external to general government		-	-
Rates clawback		-	-
Remuneration due to employees		-	-
Accumulated Absences		-	-
Receipts in advance		-	-
Trade creditors		-	-
Other		-	-
Contract Payables		-	-
Total Long Term Creditors		-	-
Total Creditors		6,549,759	6,027,564

c Payment of Invoices

The council has a target, where no other terms are agreed, of paying supplier invoices within 30 calendar days. During the year the Council paid 25,721 invoices totalling £46,171,918.

There were no disputed invoices.

The Council paid:

22,172 (86.2%) invoices with 30 calendar days target;
12,834 (49.8%) invoices within 10 working days target; and
3,549 invoices outside of the 30 day target.

Provisions	Balance as at 1 April 2019 £	Increase in provision during year £	Utilised during year £	Unused amounts reversed £	Interest cost and/or discount rate changes £	Balance as at 31 March 2020 £
Landfill Closure	2,686,230	55,232	(113,899)	(68,440)	-	2,559,123
Insurance	373,607	189,022	(66,524)	(74,544)	-	421,561
Single Status	275,930	-	(168,043)	(68,887)	-	39,000
Other	250,000	171,000	(40,000)	(110,000)	-	271,000
Total	3,585,767	415,254	(388,466)	(321,871)	-	3,290,684

Current Provisions	661,590	264,036	(335,247)	(79,897)	-	510,482
Long Term Provisions	2,924,177	151,218	(53,219)	(241,974)	-	2,780,202

Total	3,585,767	415,254	(388,466)	(321,871)	-	3,290,684
--------------	------------------	----------------	------------------	------------------	----------	------------------

Comparative Year

Provisions	Balance as at 1 April 2018 £	Increase in provision during year £	Utilised during year £	Unused amounts reversed £	Interest cost and/or discount rate changes £	Restated Balance as at 31 March 2019 £
Landfill Closure	2,122,285	648,915	(84,970)	-	-	2,686,230
Insurance	369,000	142,830	(68,057)	(70,166)	-	373,607
Single Status	367,453	4,585	-	(96,108)	-	275,930
Other	250,000	-	-	-	-	250,000
Total	3,108,738	796,330	(153,027)	(166,274)	-	3,585,767

Current Provisions	743,632	126,680	(98,581)	(110,141)	-	661,590
Long Term Provisions	2,365,106	669,650	(54,446)	(56,133)	-	2,924,177

Total	3,108,738	796,330	(153,027)	(166,274)	-	3,585,767
--------------	------------------	----------------	------------------	------------------	----------	------------------

Landfill Closure

The landfill closure provision relates to the subsequent closure costs for the closed Ballymacvea landfill site for the next 48 years. A full revaluation of the provision was carried out during the year ended 31 March 2014 by RPS Consulting Engineers and the valuation has been discounted in line with real discount rates at 31 March 2020 i.e. the discount rates are based on the National Loans fund borrowing rates.

Insurance

The insurance provision relates to the Council's estimated self insurance liability re employers and public liability claims lodged against Council. It would be expected that the majority of this expenditure will be incurred within the next three to five years.

Single Status

This provision relates to the estimated cost of Council's obligations to its employees under the National Agreement on Pay and Conditions of Service ("The Green Book") which the Council expects to finalise within the coming year. The majority of those obligations under the Green Book have been determined and agreed.

Legal

This provision relates to the estimated costs of pending Judicial Reviews, High Court actions and other legal cases.

The Council has no material exposure to any of the risk types identified below in its dealings with Financial instruments.

Credit Risk

Credit risk arises from deposits with banks and financial institutions, as well as credit exposures to Council's customers.

Trade Debtors inclusive of Vat can be analysed as follows:			£
Less than three months			373,649
Three to six months			29,823
Six months to one year			12,452
More than one year			9,847
			425,771

There is no historical experience of default in relation to deposits with banks and other financial institutions. Therefore there is no estimated exposure to risk of default.

Liquidity Risk

As the Council has ready access to borrowings from the Department of Finance's Consolidated Fund, there is no significant risk that it will be unable to raise finance to meet its commitments under financial liabilities included in notes 17 to 19. All trade and other payables are due for payment within one year.

Market Risk

Interest rate risk.

The Council is exposed to risk in terms of its exposure to interest rate movements on its investments. The Council is in receipt of loans from the Department of Finance and some short term loans from Local Authorities, these loans are at fixed concessionary rates that differ from the prevailing market rates.

Foreign Exchange Risk

The Council has no financial assets or liabilities in foreign currencies and thus has no material exposure to loss arising from movements in exchange rates.

Fair Value of Soft Loans & Government Loans

The Council is in receipt of loans from the Department of Finance at concessionary rates and local authorities' loans at rates of interest that differ from prevailing market rates. The fair value of these loans is £ 80,537,083 broken down as follows:-

	£
Government Loans Fund	71,005,088
Local Authorities	9,531,995
Total	80,537,083

Soft Loans

The Council has made no material soft loans during the year.

Employee Car loans

The Council continues to recoup a car loan from an employee who transferred to another Council.

21 Retirement Benefits

a Participation in the Northern Ireland Local Government Officers' Pension Fund.

As part of the terms and conditions of employment of its officers and other employees, the Council offers retirement benefits. Although these benefits will not actually be payable until employees retire, the Council has a commitment to make the payments that need to be disclosed at the time that employees earn their future entitlement.

The Council participates in the Northern Ireland Local Government Officers' Pension Fund administered by the Northern Ireland Local Government Officers' Superannuation Committee. This is a funded scheme, meaning that the Council and employees pay contributions into a fund, calculated at a level intended to balance the pension's liabilities with investment assets.

b Transactions relating to retirement benefits - Comprehensive Income and Expenditure Statement Charges:

The Council recognises the cost of retirement benefits in the Cost of Services on Continuing Operations when they are earned by employees, rather than when the benefits are eventually paid as pensions.

However, the charge the Council is required to make against district rates is based on the cash payable in the year, and the real cost of retirement benefits is reversed out in the adjustments between accounting basis & funding basis under regulations line, in the Movement on Reserves Statement.

The following transactions have been made in the Comprehensive Income and Expenditure Statement and the adjustments between accounting basis & funding basis under regulations line, in the Movement on Reserves Statement during the year:

	Note	2019/20 £	2018/19 £
Net cost of services:			
Current service cost		8,155,000	6,694,000
Past service cost/(gain)		240,000	4,139,000
Gains and losses on settlements or curtailments		-	-
Net operating expenditure:			
Net Interest on net defined benefit Liability (asset)		950,000	925,000
Total Post-employment Benefits charged to the Surplus or Deficit on the Provision of Services		9,345,000	11,758,000
Movement in Reserves Statement:			
Reversal of net charges made for retirement benefits in accordance with IAS 19 and the Code		(9,345,000)	(11,758,000)
Actual amount charged against the general fund balance for pensions in the year:			
Employers' contributions payable to scheme		4,593,000	4,733,000
Net adjustment to General Fund		(4,752,000)	(7,025,000)

The service cost figures include an allowance for administration expenses of £101,000.

Remeasurements recognised in Other Comprehensive Income and Expenditure	Note	2019/20 £	2018/19 £
Liability gains/(losses) due to change in assumptions		4,002,000	(10,612,000)
Liability gains/(losses) due to due to demographic changes		6,563,000	7,617,000
Liability experience gains/(losses) arising in the year		(2,856,000)	(233,000)
Actuarial gains/(losses) on plan assets		(8,384,000)	6,299,000
Other		-	-
Total gains/(losses) recognised in Other Comprehensive Income and Expenditure		(675,000)	3,071,000

c Assets and liabilities in relation to retirement benefits			
Reconciliation of present value of the scheme liabilities:	Note	2019/20 £	2018/19 £
Balance as at 1 April		192,150,000	176,464,000
Current service cost		8,155,000	6,694,000
Interest cost		4,568,000	4,551,000
Contributions by members		1,272,000	1,240,000
Remeasurement (gains) and losses:			
Actuarial gains/losses arising from changes in financial assumptions		(4,002,000)	10,612,000
Actuarial gains/losses arising from demographic changes		(6,563,000)	(7,617,000)
Actuarial gains/losses arising on liabilities from experience		2,856,000	233,000
Other (if applicable)		-	-
Past service costs/(gains)		240,000	4,139,000
Losses/(gains) on curtailments		-	-
Liabilities extinguished on settlements		-	-
Estimated unfunded benefits paid		(54,000)	(54,000)
Estimated benefits paid		(4,952,000)	(4,112,000)
Balance as at 31 March		193,670,000	192,150,000

Reconciliation of present value of the scheme assets:	Note	2019/20 £	2018/19 £
Balance as at 1 April		150,270,000	138,538,000
Interest Income		3,618,000	3,626,000
Contributions by members		1,272,000	1,240,000
Contributions by employer		4,593,000	4,679,000
Contributions in respect of unfunded benefits		-	54,000
Remeasurement gain/(loss)		(8,384,000)	6,299,000
Assets distributed on settlements		-	-
Unfunded benefits paid		(54,000)	(54,000)
Benefits paid		(4,952,000)	(4,112,000)
Balance as at 31 March		146,363,000	150,270,000

The expected return on scheme assets is determined by considering the expected returns available on the assets underlying the current investment policy. Expected yields on fixed interest investments are based on gross redemption yields as at the Balance Sheet date. Expected returns on equity investments reflect long-term real rates of return experienced in the respective markets.

The actual return on scheme assets in the year was a loss of £4,766,000 (2018/19 gain of £9,925,000).

Fair Value of Plan Assets	2019/20 £	2018/19 £
Equity investments	62,350,638	89,410,650
Bonds	56,642,481	35,313,450
Property	14,636,300	16,830,240
Cash	6,879,061	4,057,290
Other	5,854,520	4,658,370
	146,363,000	150,270,000

The above asset values are at bid value as required by IAS 19.

Details of estimates made by the Fund Manager when assessing the fair values of plan assets

The amounts included in the fair value of plan assets for property occupied by the Council was £0.

The Council's share of the Net Pension Liability (included in the Balance Sheet):

	2019/20 £	2018/19 £
Fair Value of Employer Assets	146,363,000	150,270,000
Present value of funded defined benefit obligation	(192,861,000)	(191,276,000)
Pension asset/(liability) of Funded Scheme	(46,498,000)	(41,006,000)
Present Value of unfunded defined benefit obligation	(809,000)	(874,000)
Other movement in the liability (asset) (if applicable)	-	-
Net asset/(liability) arising from the defined benefit obligation	(47,307,000)	(41,880,000)
Amount in the Balance sheet:		
Liabilities	(47,307,000)	(41,880,000)
Assets	-	-
Net Asset/(Liability)	(47,307,000)	(41,880,000)

c Scheme History

Analysis of scheme assets and liabilities	2019/20 £	2018/19 £
Fair Value of Assets in pension scheme	146,363,000	150,270,000
Present Value of Defined Benefit Obligation	(193,670,000)	(192,150,000)

Surplus/(deficit) in the Scheme (47,307,000) (41,880,000)

Amount recognised in Other Comprehensive Income and Expenditure:	2019/20 £	2018/19 £
Actuarial gains/(losses)	7,709,000	(3,228,000)
Expected Return on Plan Assets	(8,384,000)	6,299,000
Increase/(decrease) in irrecoverable surplus from membership fall and other factors	-	-
Remeasurements recognised in Other Comprehensive Income and Expenditure	(675,000)	3,071,000
Cumulative actuarial gains and losses	(861,000)	(186,000)
History of experience gains and losses:		
Experience gains and (losses) on assets	-	-
Experience gains and (losses) on liabilities	(2,856,000)	(233,000)

The liabilities show the underlying commitments that the authority has in the long run to pay retirement benefits. The total liability of £47,307,000 has a substantial impact on the net worth of the Council as recorded in the Balance Sheet.

However, statutory arrangements for funding the deficit mean that the financial position of the Council remains healthy. The deficit on the Northern Ireland Local Government Officers' Pension Fund will be made good by increased contributions over the remaining working life of employees, assessed by the scheme actuary.

Analysis of projected amount to be charged to the Comprehensive Income and Expenditure Statement for the year to 31 March 2021

	31/03/2021 £	31/03/2021
Projected current cost	7,812,000	88.2%
Net Interest on the net defined benefit liability (asset)	1,041,000	11.8%
Past service cost	-	0.0%
Gains and losses on settlements or curtailments	-	0.0%
	8,853,000	100.0%

The total contributions expected to be made to the Northern Ireland Local Government Officers' Pension Fund by the council in the year to 31 March 2021 is £8,853,000.

History of experience gains and losses

The actuarial gains/losses identified as movements on the Pensions Reserve 2019/20 can be analysed into the following categories, measured as a percentage of assets or liabilities at 31 March 2020.

	2019/20 %	2018/19 %
Experience (gains and (losses) on Assets	0.00%	0.00%
Experience gains and (losses) on Liabilities	1.47%	0.12%

e Basis for estimating assets and liabilities

Liabilities have been assessed on an actuarial basis using the projected unit method, an estimate of the pensions that will be payable in the future years dependent on assumptions about mortality rates, salary levels, etc. The Council's Fund liabilities have been assessed by Aon Hewitt Limited, an independent firm of actuaries, estimates for the Council Fund being based on data pertaining to the latest full valuation of the scheme as at 31 March 2020.

Pension scheme assumptions:		2019/20	2018/19
	%	%	
Equity investments		42.6%	59.5%
Bonds		38.7%	23.5%
Property		10.0%	11.2%
Cash		4.7%	2.7%
Other		4.0%	3.1%
Mortality assumptions:			
Longevity at 65 current pensioners:	Years		Years
Men		21.8	22.6
Women		25.0	24.9
Longevity at 65 for future pensioners:			
Men		23.2	24.3
Women		26.4	26.7
Inflation/Pension Increase Rate		2.00%	2.20%
Salary Increase Rate		3.50%	3.70%
Expected Return on Assets		0.00%	0.00%
Discount Rate		2.30%	2.40%
Pension accounts revaluation rate		2.00%	2.20%
Take-up of option to convert annual pension into retirement lump sum:			
Service to April 2009		0%	0%
Service post April 2009		0%	0%

Pension Assumptions Sensitivity Analysis

The pension figures disclosed in these financial statements are sensitive to the assumptions used.

The approximate impact of changing key assumptions on the present value of the funded defined benefit obligation as at 31 March 2020 is set out below.

In each case, only the assumption noted below is altered; all other assumptions remain the same and are summarised in the disclosure above.

Funded Pension Scheme Benefits

Discount Rate Assumption		
Adjustment to discount rate	+0.1%p.a.	-0.1%p.a.
Present value of the total obligation	189,252,000	196,539,000
% change in the present value of the total obligation	-1.90%	-1.90%
Projected service cost	7,554,000	8,078,000
Approximate % change in projected service cost	3.30%	-3.40%
Rate of General Increase in Salaries		
Adjustment to salary increase rate	+0.1%p.a.	-0.1%p.a.
Present value of the total obligation	193,648,000	192,084,000
% change in the present value of the total obligation	0.40%	-0.40%
Projected service cost	7,812,000	7,812,000
Approximate % change in projected service cost	0.00%	0.00%
Rate of Increase to Pensions in Payment and Deferred Pension Assumption		
Adjustment to pension increase rate	+0.1%p.a.	-0.1%p.a.
Present value of the total obligation	196,265,000	189,526,000
% change in the present value of the total obligation	1.80%	-1.70%
Projected service cost	8,078,000	7,554,000
Approximate % change in projected service cost	3.40%	3.00%
Post Retirement Mortality Assumption		
Adjustment to mortality age rating assumption*	- 1 Year	+1 Year
Present value of the total obligation	199,090,000	186,692
% change in the present value of the total obligation	3.20%	-3.20%
Projected service cost	8,108,000	7,519,000
Approximate % change in projected service cost	3.80%	-3.80%

* A rating of +1 year means that members are assumed to follow the mortality pattern of the base table above for an individual that is 1 year older than that.

f Major categories of plan assets as percentage of total plan assets

The Northern Ireland Local Government Officers' Pension Fund's assets consist of the following categories, by proportion of the total assets held:

	31/03/2020	31/03/2019
	%	%
Equity investments	42.60%	59.50%
Government Bonds	26.10%	16.50%
Corporate Bonds	12.60%	7.00%
Property	10.00%	11.20%
Cash	4.70%	2.70%
Other	4.00%	3.10%
Total	100.00%	100.00%

g Northern Ireland Civil Service Pension Arrangements

The Northern Ireland Civil Service Pension arrangements are unfunded multi-employer defined benefit schemes but the Council is unable to identify its share of the underlying assets and liabilities. The most up to date actuarial valuation was carried out as at 31/03/20. This valuation is then reviewed by the Scheme Actuary and updated to reflect current conditions and rolled forward to the reporting date of the DoF Superannuation and Other Allowances Resource Accounts as at 31 March 2020.

Guaranteed Minimum Pension (GMP) is a portion of pension that was accrued by individuals who were contracted out of the state pension prior to 6 April 1997. At present there is an inequality of benefits between male and female members who have GMP. Although the Government intends that GMP should be equalised, at present it is not clear how this equalisation will be implemented. In July 2014 the Government stated an intention to develop fully considered proposals and to publish guidance when this work is completed, but no target date was given. The impact of any liabilities relating to the Council is therefore uncertain and no provision has been made in these financial statements.

22	Donated Assets Account	Note	2019/20	2018/19
			£	£

The Council has no donated assets.

23 Capital Grants Received in Advance

The Council has not received any Capital grants in advance.

24 Contingencies

The Northern Ireland Environment Agency reviews the adequacy of the Council's Financial Provision for landfill capping and aftercare costs in line with its paper "Financial provision for Waste Management activities in NI". As a consequence the current landfill closure provision in the financial statements may change. In addition Council may incur further costs in respect of their landfill site's gas management system.

The Council is one of the parties to the successful legal action (October 2020), taken against HMRC, that charges paid since 2006 by members of the public for access to sports, recreation and leisure facilities provided by NI Councils were outside the scope of the VAT regime and that the VAT should be repaid. The Council understands that HMRC is considering the implications of the judgement and the outcome of which will be reported to the Council in due course. An asset is not included within the Statement of Accounts as the amount of the asset cannot be deemed virtually certain.

The Council has been gifted land located at the the former Michelin and Wright bus sites. The Legal transactions in relation to these are still in progress but expected to complete in the next financial year when they will be recognised in the balance sheet.

The Arc 21 Joint Committee has with the approval of their participant Council's entered into a Contingent Liability undertaking with the bidding consortium in the procurement of the Residual Waste Treatment project and Mid and East Antrim Borough Council has agreed its share of the contingent liability. Payments made if any in accordance with this undertaking will be funded by the participant Councils. No further information on this agreement can be disclosed due to the commercial sensitivity of the procurement process.

The Covid-19 pandemic hit the UK towards the end of the 2019/20 financial year. Given the timing of the pandemic, at the end of the financial year, there was minimal impact on the Council's 2019/20 financial outturn and the 2019/20 Statement of Accounts.

However, it is extremely likely during 2020/21, and beyond, that there will be a significant impact from Covid-19 on the Council's finances. The Council expects financial pressures to result from a sustained loss of income, the cost of the Covid-19 response and recovery and the likelihood of reduced funding in future years, as the demand on government resources shifts due to the impact of the pandemic. It is difficult at this time, in this early stage of recovery, to quantify the impact of Covid-19, when it remains to be determined what services will look like in the "new norm," how they will be provided, and the level of funding that is likely to be made available to deliver them.

25 Other cash flow disclosures

a Analysis of Adjustments to Surplus/Deficit on the Provision of Services

Adjustment to surplus or deficit on the provision of services for noncash movements	Notes	2019/20	2018/19
		£	£
Depreciation	11	8,205,480	7,580,751
Impairment & downward revaluations (& non-sale derecognitions)	11	(223,458)	3,880,811
Amortisation (included with depreciation above)		-	-
(Increase)/Decrease in inventories		(39,878)	(20,430)
(Increase)/Decrease in Debtors		2,099,979	(3,374,444)
Increase/(decrease) in impairment provision for bad debts		(43,510)	2,909
Increase/(Decrease) in Creditors		522,195	(59,763)
Increase/(Decrease) in Interest Creditors		-	-
Payments to NILGOSC	21	4,752,000	7,025,000
Carrying amount of non-current assets sold	8	52,901	117,842
AIC/WIP written off to Net Cost of Services	11	43,003	22,527
Contributions to Other Reserves/Provisions		(295,090)	477,032
Movement in value of investment properties-included above in Impairment & downward revaluations (& non-sale derecognitions)		(63,933)	21,229
Amounts posted to CIES from Donated Assets Account		-	-
Contract Costs		-	-
Contract Assets		-	-
Contract Liabilities		-	-
Deferred revenue		-	-
		15,009,689	15,673,464

Adjust for items included in the net surplus or deficit on the provision of services that are investing and financing activities	Notes	2019/20	2018/19
		£	£
Purchase of short-term (not considered to be cash equivalents) and long-term investments (includes investments in associates, joint ventures and subsidiaries)		76,086	1,613,345
Proceeds from short-term (not considered to be cash equivalents) and long-term investments (includes investments in associates, joint ventures and subsidiaries)		-	-
Proceeds from the sale of PP&E, investment property and intangible assets		(98,722)	(254,663)
Capital grants included in "Taxation & non-specific grant income"		(773,872)	(516,949)
		(796,508)	841,733

b Cash and Cash Equivalents

For the purposes of the cash flow statement, cash and cash equivalents include cash on hand and in bank and short term deposits and investments (considered to be cash equivalents), net of outstanding bank overdrafts. Cash and cash equivalents at the end of the reporting period as shown in the statement of cash flows can be reconciled to the related items in the Balance Sheet as follows:

	2019/20	2018/19	2017/18
	£	£	£
Cash and Bank balances	1,942,281	1,727,563	2,072,861
Short Term Deposits (considered to be Cash Equivalents)	-	-	-
Short Term Investments (considered to be Cash Equivalents)	-	-	-
Bank Overdraft	-	-	-
	1,942,281	1,727,563	2,072,861

c Cash Flow Statement: Operating Activities

	2019/20	2018/19
	£	£
The cash flows from operating activities include:		
Interest received	128,592	149,742
Interest paid	(2,762,453)	(2,834,208)

d Cash flows from Investing Activities

	2019/20	2018/19
	£	£
Purchase of PP&E, investment property and intangible assets	8,067,311	4,018,334
Purchase of Short Term Investments (not considered to be cash equivalents)	-	-
Purchase of Long Term Investments	-	-
Other Payments for Investing Activities	-	-
Proceeds from the sale of PP&E, investment property and intangible assets	(98,722)	(254,663)
Proceeds from Short Term Investments (not considered to be cash equivalents)	-	-
Proceeds from Long Term Investments	-	-
Capital Grants and Contributions Received	(773,872)	(516,949)
Other Receipts from Investing Activities	-	-
Net Cash flows from Investing Activities	7,194,717	3,246,722

e Cash flows from Financing Activities	2019/20	2018/19
	£	£
Cash Receipts from Short and Long Term Borrowing	7,500,000	8,400,000
Other Receipts from Financing Activities	-	-
Cash payments for the reduction of the outstanding liability relating to a finance lease and on-Balance Sheet PFI contracts	-	-
Repayment of Short and Long Term Borrowing	(4,731,613)	(8,461,006)
Other payments for Financing Activities	-	-
Net Cash flows from Financing Activities	2,768,387	(61,006)

26 Usable Reserves

a Capital Receipts Reserve

These are capital receipts which have originated primarily from the sale of assets which have not yet been used to finance capital expenditure.

The Capital Receipts Reserve is credited with the proceeds from fixed asset sales and other monies defined by statute as capital receipts. These are originally credited to the Comprehensive Income and Expenditure Statement as part of the gain/loss on disposal and posted out via the Movement in Reserves Statement to the Capital Receipts Reserve. The reserve is written down when resources are applied to finance new capital expenditure or set aside to reduce an authority's capital financing requirement (or used for other purposes permitted by statute).

Capital Receipts Reserve	Notes	31/03/2020	31/03/2019
		£	£
At 1 April		117,500	-
Movement			
Transfers between statutory & other reserves & the General Fund		-	-
Disposal of Non Current Assets/Capital Sales	4,8	98,722	254,663
Capital Receipts used to finance capital expenditure	12	(216,222)	(137,163)
Difference between finance and other costs and income calculated on an accounting basis and finance costs calculated in accordance with statutory requirements		-	-
Other Movements		-	-
At 31 March		-	117,500

b Capital Grants Unapplied Account

Where a capital grant or contribution (or part thereof) has been recognised as income in the Comprehensive Income and Expenditure Statement, but the expenditure to be financed from that grant or contribution has not been incurred at the Balance Sheet date, the grant or contribution shall be transferred to the Capital Grants Unapplied Account (within the usable reserves section of the balance sheet), reflecting its status as a capital resource available to finance expenditure. This transfer is reported in the Movement in Reserves Statement.

When, at a future date, the expenditure to be financed from the grant or contribution is incurred, the grant or contribution (or part thereof) shall be transferred from the Capital Grants Unapplied Account to the Capital Adjustment Account, reflecting the application of capital resources to finance expenditure. This transfer is also reported in the Movement in Reserves Statement or in the notes to the accounts.

Capital Grants Unapplied account	Notes	31/03/2020	31/03/2019
		£	£
At 1 April		147,280	-
Movement			
Unapplied Capital Grants received in year		89,962	147,280
Unapplied Capital Grants transferred to CAA in year		(147,280)	-
At 31 March		89,962	147,280

c Capital Fund

This fund was established under section 56 of the Local Government Act (NI) 1972, however this section of the act was repealed under the Local Government Finance Act (Northern Ireland) 2011.

Capital Fund	Notes	31/03/2020	31/03/2019
		£	£
At 1 April		5,693,865	5,064,855
Transfers between statutory & other reserves & the General Fund		-	700,000
Transfers between Capital Fund & CAA to finance Capital Expenditure	12	(772,158)	(70,990)
At 31 March		4,921,707	5,693,865

	£
Fund for Legacy Ballymena Borough Council Capital Projects	2,722,962
Fund for Mid and East Antrim Borough Council Capital Projects	2,198,745
Total	4,921,707

d Renewal and Repairs Fund

This fund was established under section 56 of the Local Government Act (NI) 1972, however this section of the act was repealed under the Local Government Finance Act (Northern Ireland) 2011.

Renewal and Repairs Fund	Notes	31/03/2020	31/03/2019
		£	£
At 1 April		2,725,617	2,725,617
Transfers between statutory & other reserves & the General Fund		-	-
Transfers between Renewal & Repair Fund & CAA to finance Capital Expenditure	12	-	-
At 31 March		2,725,617	2,725,617

	£
General	2,725,617
Total	2,725,617

e Other Balances & Reserves

Other Balances & Reserves	Notes	31/03/2020	31/03/2019
		£	£
At 1 April		3,324,814	3,742,964
Transfers between statutory & other reserves & the General Fund	4	(1,526,062)	(418,150)
Transfers between Capital Fund/Renewal & Repair Fund & CAA to finance capital expenditure	11	-	-
At 31 March		1,798,752	3,324,814

f General Fund

This reserve shows the accounting cost in the year of providing services in accordance with generally accepted accounting practices, rather than the amount to be funded from District Rates. Councils raise rates to cover expenditure in accordance with regulations; this may be different from the accounting cost. The taxation position is shown in the Movement in Reserves Statement.

General Fund	Notes	31/03/2020	31/03/2019
		£	£
At 1 April		4,200,733	4,094,437
Applied Capital Grants	10, 12	(683,910)	(369,669)
Unapplied Capital Grants received in year		(89,962)	(147,280)
Direct Revenue Financing	4, 12	(41,720)	-
Depreciation and Impairment adjustment	4	7,961,092	11,505,318
Statutory Provision for financing Capital Investment	4	(5,150,278)	(4,929,322)
Net Revenue expenditure funded from capital under statute	4, 12	1,312,646	901,288
Surplus/(Deficit) on the Provision of Services	CIES	(9,572,133)	(13,552,767)
Transfers between Statutory and Other Reserves and the General Fund	4	1,526,062	(281,850)
Net movements on Pension Reserve	4, 21	4,752,000	7,025,000
Disposal of Fixed Assets/Capital Sales	3, 4	(45,821)	(136,821)
Difference between finance and other costs and income calculated on an accounting basis and finance costs calculated in accordance with statutory requirements		62,391	104,313
Other Movements		(11,665)	(11,914)
At 31 March		4,219,435	4,200,733

27 Unuseable Reserves

a Capital Adjustment Account

The Capital Adjustment Account absorbs the timing differences arising from the different arrangements for accounting for the consumption of non-current assets and for the acquisition, construction or enhancement of those assets under statutory provisions.

The Account is debited with the cost of acquisition, construction or enhancement as depreciation, impairment losses and amortisations are charged to the Comprehensive Income and Expenditure Statement, with reconciling postings from the Revaluation Reserve to convert fair value figures to an historic cost basis.

The account is credited with the amounts set aside by the Council as finance for the costs of acquisition, construction and subsequent costs.

The Account contains accumulated gains and losses on Investment Properties and gains recognised on donated assets that have yet to be consumed by the Council.

The Account also contains revaluation gains accumulated on Property, Plant and Equipment before 1 April 2008, the date that the Revaluation Reserve was created to hold such gains.

Capital Adjustment Account	Notes	31/03/2020	31/03/2019
		£	£
At 1 April		67,397,848	71,469,009
Applied Capital Grants	10, 12	683,910	369,669
Unapplied Capital Grants transferred to CAA in year		147,280	-
Direct Revenue Financing	4, 12	41,720	-
Depreciation & Impairment adjustment	11	(7,961,092)	(11,505,318)
Statutory Provision for financing Capital Investment	4, 12	5,150,278	4,929,322
Net Revenue expenditure funded from Capital under statute	4, 12	(1,312,646)	(901,288)
Disposal of Fixed Assets/ Capital Sales	4, 11	(52,901)	(117,842)
Capital Receipts used to finance capital expenditure	4, 12	216,222	137,163
Other Movements		3,516,175	2,946,143
Transfers between Capital Fund/Renewal & Repair Fund & CAA to finance capital expenditure	12	772,158	70,990
At 31 March		68,598,952	67,397,848

b Financial Instruments Adjustment Account

The Council has no transactions that would require use of this account.

c Revaluation Reserve

The Revaluation Reserve contains the gains made by the Council arising from increases in the value of its Property, Plant and Equipment and Intangible Assets. The reserve is reduced when assets with accumulated gains are:

- revalued downwards or impaired and the gains are lost
- used in the provision of services and the gains are consumed through depreciation, or
- disposed of and the gains are realised.

The reserve contains only revaluation gains accumulated since 1 April 2008, the date the reserve was created. Accumulated gains arising before that date are consolidated into the balance on the Capital Adjustment Account.

The purpose of this account is to build up a balance based on the revaluation (upwards or downwards) of individual assets. All such revaluations (excluding impairment losses that have been debited to Surplus/(Deficit) on the Provision of Services are mirrored in Other Comprehensive Income and Expenditure. It is a fundamental principle of this account that it never becomes negative. If an asset was held at current value when derecognised, the balance held on the Revaluation Reserve is written off to the Capital Adjustment Account.

Revaluation Reserve	Notes	31/03/2020	31/03/2019
		£	£
At 1 April		76,306,268	74,051,003
Revaluation & Impairment	11	8,256,265	5,201,408
Movements from associates & joint ventures			-
Other Movements		(3,516,175)	(2,946,143)
At 31 March		81,046,358	76,306,268

d Available for Sale Financial Instruments Adjustment Reserve and Financial Instruments Revaluation Reserve

The Council has no transactions that would require use of this account.

e Pension Reserve

Pension Reserve	Notes	31/03/2020	31/03/2019
		£	£
At 1 April		(41,880,000)	(37,926,000)
Net Movements on Pension Reserve	4, 21	(4,752,000)	(7,025,000)
Revaluation & Impairment	21	(675,000)	3,071,000
At 31 March		(47,307,000)	(41,880,000)

f Deferred Capital Receipts Account

The Council has no transactions that would require use of this account.

g Accumulated Absences Account

The Accumulated Absences Account absorbs the differences that would otherwise arise on the General Fund balance from accruing for compensated absences earned but not taken in the year e.g. staff annual leave entitlement carried forward at the end of the financial year. Statutory arrangements are expected to require that the impact on the General Fund is neutralised by transfers to or from this Accumulated Absences Account.

Accumulated Absences Account	Notes	31/03/2020	31/03/2019
		£	£
At 1 April		(557,995)	(453,682)
Difference between finance and other costs and income calculated on an accounting basis and finance costs calculated in accordance with statutory requirements		(62,391)	(104,313)
At 31 March		(620,386)	(557,995)

h Provisions Discount Rate Reserve

The Provisions Discount Rate Reserve covers the arrangement, put in place by the Department under its amendment to the 2017/18 accounts direction (see DfC circular 17/18), to allow for mitigation of the costs not allowed for by Councils who had adopted the HM Treasury Central Government discount rate for long-term provisions such as Landfill costs.

Provisions Discount Rate Reserve	Notes	31/03/2020	31/03/2019
		£	£
At 1 April		(559,946)	(571,860)
Difference between finance and other costs and income calculated on an accounting basis and finance costs calculated in accordance with statutory requirements		11,665	11,914
Other Movements		-	-
At 31 March		(548,281)	(559,946)

28 Disclosure on Transition to IFRS 15

The following tables shows the impact of adopting IFRS 15 on the Council's accounts for the year

Comprehensive Income and Expenditure Statement for the year ended 31 March 2020

	Impact of changes in accounting policies		
	As reported		Amounts without adoption of
	(2019/20)	Adjustments	IFRS 15
Income from the provision of services	-	-	-
Expenditure on the provision of services	-	-	-
Net expenditure on the provision of services	-	-	-
Other operating expenditure	(45,821)	-	(45,821)
Financing and investment income and expenditure	3,453,171	-	3,453,171
Surplus or deficit on discontinued operations	-	-	-
Taxation and non-specific grant income and expenditure	(53,830,071)	-	(53,830,071)
(Surplus) or Deficit on Provision of Services	(9,572,133)	-	(9,572,133)
Other Comprehensive Income and Expenditure	7,581,265	-	7,581,265
Total Comprehensive Income and Expenditure	(1,990,868)	-	(1,990,868)

Movement in Reserve Statement during 2019/20

	Impact of changes in accounting policies		
	As reported		Amounts without adoption of
	(2019/20)	Adjustments	IFRS 15
Total Comprehensive Income and Expenditure	(1,990,868)	-	(1,990,868)
Adjustments between the accounting basis and the funding basis under regulations	158,945	-	158,945
Increase or Decrease in 2018/19	(1,831,923)	-	(1,831,923)
Balance at 31 March 2020 carried forward	115,084,061	-	115,084,061

Balance Sheet as at 31 March 2020

	Impact of changes in accounting policies		
	As reported		Amounts without adoption of
	(2019/20)	Adjustments	IFRS 15
Long-term assets	220,528,654	-	220,528,654
Contract costs	-	-	-
Trade and other receivables	6,365,458	-	6,365,458
Contract assets	-	-	-
Other	-	-	-
Current assets	6,365,458	-	6,365,458
Trade and other payables	6,549,759	-	6,549,759
Contract Liabilities	-	-	-
Other	-	-	-
Current liabilities	19,759,226	-	19,759,226
Long-term liabilities	102,954,914	-	102,954,914
Net Assets	114,925,117	-	114,925,117
Usable Reserves	13,755,473	-	13,755,473
Unusable Reserves	101,169,643	-	101,169,643
Total Reserves	114,925,116	-	114,925,116

Cash Flow Statement for the year ended 31 March 2020

	Impact of changes in accounting policies		
	As reported	Adjustments	Amounts without adoption of IFRS 15
	(2019/20)		
Net (Surplus) or Deficit on the provision of services	(9,572,133)	-	(9,572,133)
Adjustments to net surplus or deficit on the provision of services for non-cash movements	15,009,689	-	15,009,689
Increase/ Decrease in:			
Inventories	(39,878)	-	(39,878)
Contract Costs	-	-	-
Contract assets	-	-	-
Trade and other receivables	2,099,979	-	2,099,979
Trade and other payables	522,195	-	522,195
Contract Liabilities	-	-	-
Deferred Revenue	-	-	-
Other	12,427,393	-	12,427,393
Adjustments for items included in the net surplus or deficit on the provision of services that are investing and financing activities	(796,508)	-	(796,508)
Net cash flows from Operating Activities	4,641,048	-	4,641,048
Investing Activities	(7,194,717)	-	(7,194,717)
Financing Activities	2,768,387	-	2,768,387
Net increase or decrease in cash and cash equivalents	214,718	-	214,718
Cash and cash equivalents at the beginning of the reporting period	1,727,563	-	1,727,563
Cash and cash equivalents at the end of the reporting period	1,942,281	-	1,942,281

The objective of this note is to ensure that the Council discloses sufficient information to enable users of its financial statements to understand the nature, amount, timing and uncertainty of revenue and cash flows arising from contracts with service recipients.

29 Significant Trading Operations

The Council does not have any significant trading operations.

30 Agency Services

The Council does not provide any Agency Services.

31 Related Party Transactions

A Related Party Transaction is a transfer of resource or obligations between related parties, regardless of whether a price is charged. Related Party Transactions exclude transactions with any other entity that is a related party solely because of its economic dependence on Council or the Government of which it forms a part. A related party is one that has the ability to control the other party in making financial and operating decisions. This includes cases where the related party entity and another entity are subject to common control but excludes providers of finance in the course of their normal business with the Council and Trade Unions in the course of their normal dealings with the Council.

The Council paid amounts of over £3,000 to the following bodies in which Councillors or Council Senior Management had an interest. Councillors were voted on to Management Committees in relation to some of the organisations listed. Any payments were made with proper consideration of declaration of interest.

	31/03/2020 £	31/03/2019 £
Association for Public Service Excellence	11,051	11,647
Arc 21	4,560,793	4,457,997
Ballee & Harrville Community Enterprise	12,196	11,641
Ballykeel Moving Forward	-	3,491
Ballymarlow Community & District Group	5,000	3,340
Ballymena Bid Ltd	16,123	17,168
Ballymena Business Centre	7,738	-
Ballymena North Patnership	49,615	33,137
Ballymena Retailers Against Crime	10,379	-
Ballymena Chamber of Commerce	6,240	-
Cairndhu Rowing Club	3,208	-
Carrickfergus Enterprise	7,012	29,297
Carrick Rangers Academy	4,983	-
Carrickfergus Historical and Re-enactment	-	8,976
Causeway Coast & Glens Heritage Trust	27,685	22,000
Citizens Advice Bureau	230,000	305,815
County Antrim Agricultural Association	10,761	5,000
Doury Road Development Group	7,321	4,424
Education Authority	8,651	-
First Broughshane Presbyterian Church	4,250	-
Glenlough Community Association	6,768	5,762
Glenravel & District Community & Residents	8,198	4,885
Grow Rural development Programme	6,295	-
Harryville Partnership	4,469	4,650
Hope Centre	-	12,449
Kirkinriola Community Services	3,805	3,450
Lough Neagh Partnership	3,500	3,500
Mid and East Antrim Agewell Partnership	158,259	155,481
Millbrook Community Association	7,821	15,649
National Association of Councillors (NI)	3,200	3,200
Northern Ireland Local Government	53,233	47,629
North Irish Dragoons Society	3,577	3,036
Onus NI Ltd	10,262	11,834
Raglan Community Development Renovation	4,900	24,100
Royal Black District Institution	-	3,035
Royal Scottish Pipe Band Association	37,000	7,000
St Mary's Ahoghill	3,003	-
Translink	6,416	5,132
Tullygarley and District Residents Group	3,604	-
Whitehead Community Association	32,710	38,064
	5,340,026	5,262,789

Joint Committees

Arc 21

The Council is a member of the Arc 21 Joint Committee which is established for the purposes of managing waste. During the year the Council made a contribution of £148k (2018/19 £146k) towards the running costs of Arc 21. The Council also made payments to Arc 21 of £4.4m (2018/19 £4.3m) for those waste management contracts specifically procured and managed by Arc 21 on behalf of the Council.

The Joint Committee is a partnership of Antrim and Newtownabbey, Mid and East Antrim, Ards and North Down, Belfast, Lisburn and Castlereagh, Newry, Mourne and Down Councils established to collaborate in implementing the Waste Management Plan to develop an integrated network of regional waste management facilities which would be cost effective to the public.

The Joint Committee accounts for its funding by the provision of a statement of accounts which is prepared under the Local Government (Northern Ireland) Order 2005 and are subject to statutory audit by the Local Government Auditor.

Ballymena Business Improvement District

Mid and East Antrim administers the debt collection including a Ballymena Bid Bank Account for Ballymena BID Ltd. At the 31 March 2020 the balance on this Bank account was £0. All transactions relating to this company are not included in the Mid and East Antrim Borough Council financial statements.

32 Date of Authorisation for Issue

The Chief Financial Officer authorised these financial statements for issue on 21st December 2020.

Mid and East Antrim Borough Council
Notes to the Financial Statements
FOR THE YEAR ENDED 31 MARCH 2020

33 The table below reflects the detailed Income and Expenditure Analysis

	2019/20			2018/19		
	Gross Expenditure	Gross Income	Net Expenditure	Restated Gross Expenditure	Restated Gross Income	Restated Net Expenditure
	£	£	£	£	£	£
Directorate Expenditure						
Corporate Performance & Improvement	1,337,919	(250,905)	1,087,014	1,391,205	(71,407)	1,319,798
Chief Executive	1,337,919	(250,905)	1,087,014	1,391,205	(71,407)	1,319,798
Director of Support Services	24,050	-	24,050	32,549	-	32,549
Strategic Finance	2,849,037	(507,483)	2,341,554	2,889,303	(9,983)	2,879,320
Digital Innovation & Corporate Governance	1,656,098	(1,134)	1,654,964	1,481,554	(450)	1,481,104
HR and OD	1,310,195	(6,533)	1,303,662	4,540,485	(6,014)	4,534,471
Support Services	5,839,380	(515,150)	5,324,230	8,943,891	(16,447)	8,927,444
Director of Community	2,086,053	(739,154)	1,346,899	1,975,305	(521,178)	1,454,127
Community Planning and Development	3,140,277	(1,366,353)	1,773,924	3,211,031	(1,210,465)	2,000,566
Public Protection, Health and Wellbeing	11,679,462	(3,856,246)	7,823,216	10,695,913	(3,766,630)	6,929,283
Community	16,905,792	(5,961,753)	10,944,039	15,882,249	(5,498,273)	10,383,976
Facilities and Waste	22,973,889	(1,183,099)	21,790,790	23,722,783	(1,231,533)	22,491,250
Parks and Open Spaces	7,254,631	(2,201,447)	5,053,184	7,053,530	(2,188,146)	4,865,384
Operations	30,228,520	(3,384,546)	26,843,974	30,776,313	(3,419,679)	27,356,634
Director of Development	3,092	-	3,092	3,092	-	3,092
Economic Development	3,642,392	(1,108,114)	2,534,278	2,743,794	(538,601)	2,205,193
Tourism, Arts and Culture	4,663,356	(875,281)	3,788,075	8,516,934	(903,192)	7,613,742
Planning and Building Control	3,975,196	(1,766,796)	2,208,400	3,587,131	(1,830,636)	1,756,495
Regeneration	509,900	(165,600)	344,300	288,261	(69,992)	218,269
Refcus	1,716,200	(1,030,536)	685,664	1,024,958	(1,074,524)	(49,566)
Development	14,510,136	(4,946,327)	9,563,809	16,164,170	(4,416,945)	11,747,225
Director of Corporate Services	1,304,204	(61,919)	1,242,285	576,610	(1,157)	575,453
Corporate Services	5,083,064	(93,561)	4,989,503	4,673,892	(153,568)	4,520,324
Corporate Services	6,387,268	(155,480)	6,231,788	5,250,502	(154,725)	5,095,777
Interest payable	3,712,453	(192,525)	3,519,928	3,780,437	(149,742)	3,630,695
Investment Income	4,482	(71,239)	(66,757)	11,105	(57,678)	(46,573)
Financing and Investment Income	3,716,935	(263,764)	3,453,171	3,791,542	(207,420)	3,584,122
District Rate Income	-	(48,239,908)	(48,239,908)	-	(48,162,515)	(48,162,515)
General Grant	-	(4,816,291)	(4,816,291)	-	(6,045,924)	(6,045,924)
Capital Grants	-	(773,872)	(773,872)	-	(516,949)	(516,949)
Other Income & Expenditure	-	(53,830,071)	(53,830,071)	-	(54,725,388)	(54,725,388)