

Glenarm Development Framework

Introduction

WELCOME TO THE PUBLIC EXHIBITION

Mid and East Antrim Borough Council instructed AECOM in August 2018 to prepare a Development Framework for Glenarm. This is intended to help to provide direction for future development and investment within the village.

The focus will be on Council-owned land and other underutilised land in the centre of the village. The land have been categorised into the following character areas:

- **Site 1 - Seafront and harbour development area**
- **Site 2 - Former quarry and mill development area**
- **Site 3 - Former primary school and recreational area**

In addition to the analysis of publications/reports, feedback from stakeholders including local representatives and statutory bodies have informed the draft options. A number of illustrative draft development options have been proposed for each character area. Please consider each of the options for each area. There are various combinations of the options that could be put together and we want to hear about your preferences and ideas.

Have your say

Your input is an essential part of the process and we want to know what you think. Feedback sheets and post boxes will be provided at the public events for you to submit your comments.

Following the open house event on **24th October 2018**, the exhibition will be displayed in the Glenarm Visitor Centre between **25th October and 8th November 2018**.

Glenarm Visitor Centre opening times are 9:30am-2:30pm on weekdays, 9.30am-1pm on Saturdays and 11am-1pm on Sundays.

You can also view the draft proposals online at:
www.midandeantrim.gov.uk/consultations

You can send your comments via:
Email to:
glenarm.consultation@midandeantrim.gov.uk

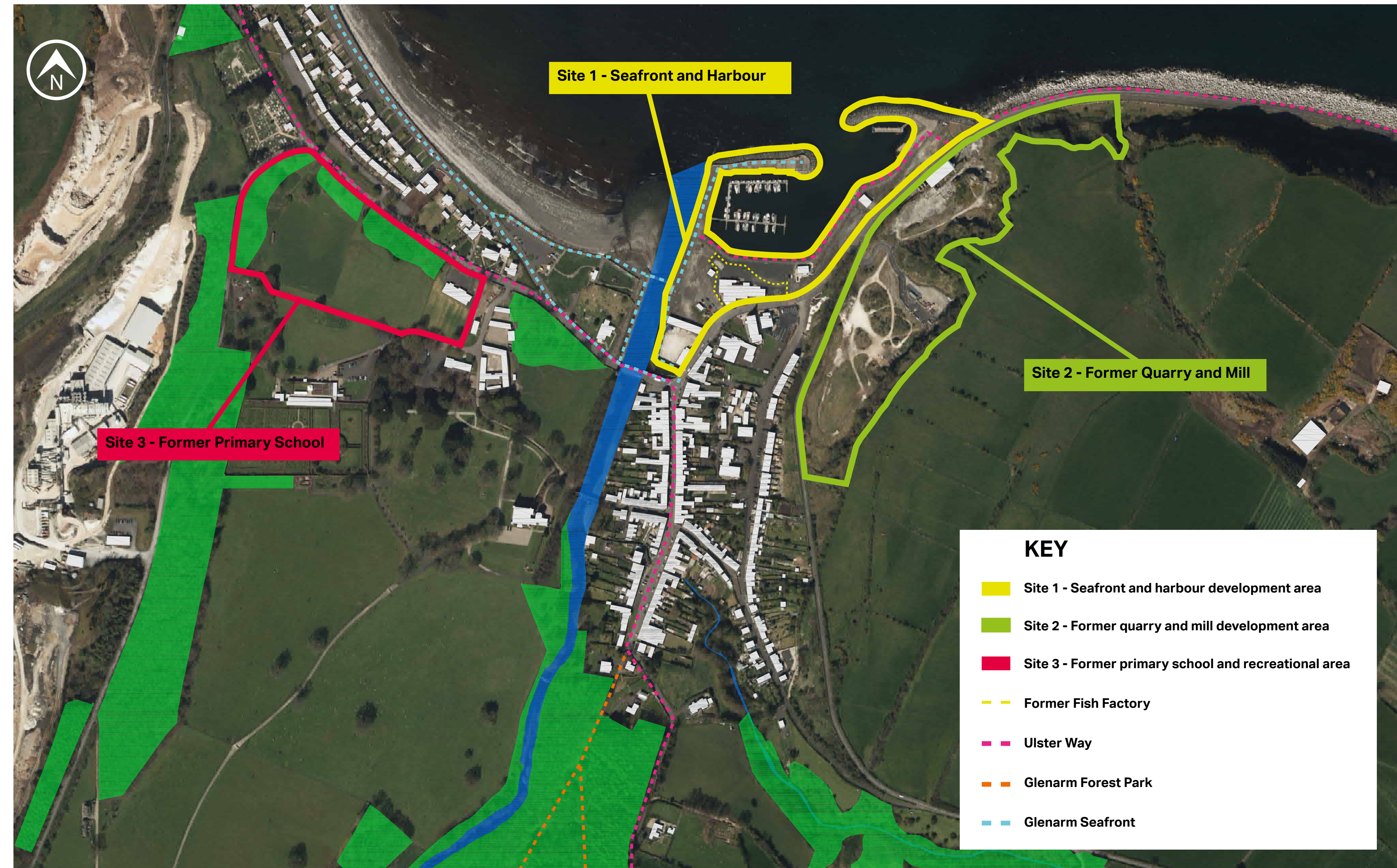
Post to:
AECOM Planning, 10th floor Clarence West Building, 2 Clarence Street West, Belfast BT2 7GP.

All comments to be received by Thursday 8 November 2018.

Next Steps

Following the receipt of your comments AECOM will gather and collate all the information and feedback throughout November 2018. The key findings and recommendations will be presented to the Elected Members in early December 2018 to support Council make an informed decision on potential disposal of Council lands within Glenarm.

Council will publish the Glenarm Consultation Summary Document on its website in late January 2019.



DESIGN PRINCIPLES

The following draft principles have helped shape the design of the overarching draft framework that links the development areas and the village together.

- **Respecting the Village Conservation Area**
- **Enhance unique tourist experiences, increase visitor stays and increase visitor spend**
- **Provide opportunities for future investment and employment**
- **Improve linkages between destinations throughout the village**
- **Introducing a sea front**
- **Flexible car parking/event space at the harbour**
- **Consider potential spaces for community uses/services/amenities/recreation**

Any future proposals for these areas will be subject to further investigation of the relevant planning, environmental, financial considerations and ownership agreements.

THE CONTEXT

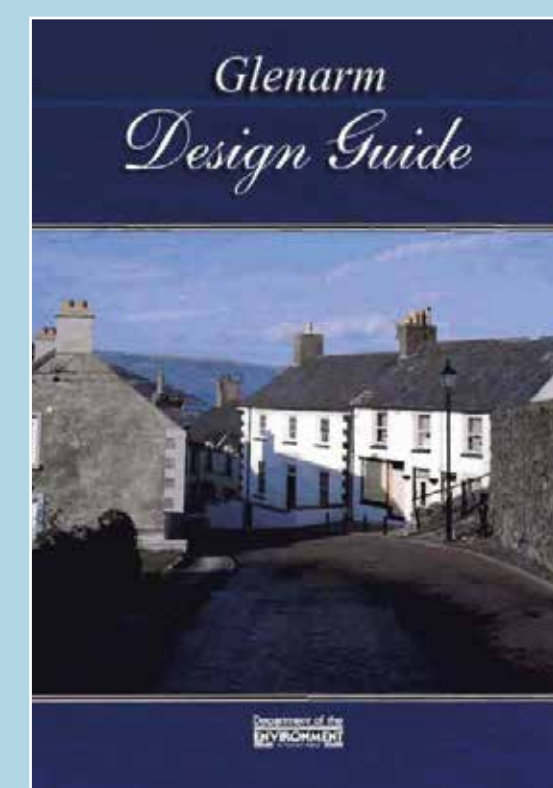
A robust analysis of current and previous plans, studies and reports were undertaken by the design team who were mindful of their context and conclusions while developing the options.



Mid and East Antrim Borough Council – Preferred Options Paper (2017)
The aim of the POP is to guide the local development plan process. Glenarm is mentioned in a number of aspects including open space, tourism, leisure and built heritage.



Glenarm Village Plan 2017-2022
This document aims to set out a clear vision for the local village detailing actions needed while seeking to address current issues. It sets out a vision of how the village can continue to develop sustainably.



Planning Considerations
The design team were mindful of the statutory planning context, in particular the Larne Area Plan which is the current Local Development Plan for the area. In terms of built heritage, the team have frequently referenced the Glenarm Design Guide.



Glenarm Regeneration Strategy
Produced by the Prince's Foundation in 2010, this document outlined key themes identified through the community consultation. It set out a vision for each of the sites, some of which have been progressed.

PROGRESS IS BEING MADE...

Within Glenarm, several key developments have been completed over the last numbers of years, or are currently under construction. The images below highlight a number of these projects.



Work is almost complete for the upgrade of the children's play and kickabout area at The Cloney, Glenarm. The scheme primarily includes a new multi-use games area (MUGA) and the provision of a modern, maritime themed play area. The scheme is due to open in the autumn of 2018.



The refurbishment of Seaview Hall in 2015 has provided an award winning accommodation for the long established Steenson's Jewellers and the Glenarm Visitor Centre. Bringing these two facilities together as a focal point has proved successful at attracting visitors to Glenarm.



Within the grounds of Glenarm Castle, several new attractions have opened or been re-invigorated in recent times, to provide additional visitor destinations. This includes but is not limited to:

- **Refurbishment of the Castle Tea Room**
- **Opening of The Byre fashion and visitor shop**
- **Granny Shaw's Fudge Factory**


Anne Donaghy
Clerk & Chief Executive
24 October 2018