



Household Recycling Centres

Your guide to what you can recycle at your local Household Recycling Centre

Waste Operations Department

T: 0300 124 5000 (Option 0)

E: operational.services@midandeantrim.gov.uk



www.midandeantrim.gov.uk



**Mid & East
Antrim**
Borough Council

Your colour-coded recycling guide



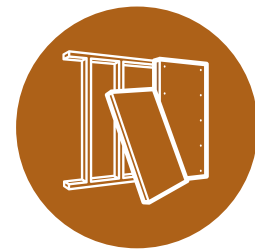
Cans

Drink cans, food tins, aerosols etc



Textiles

Mixed textiles and clothes

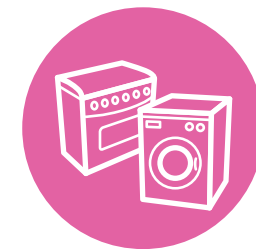


Plaster Board



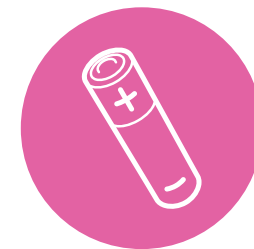
Wood, Timber, MDF, Chip Board

No glass content



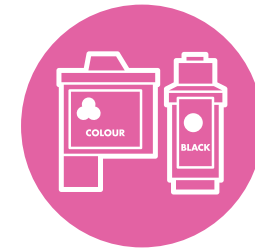
Large Electrical Appliances

Washing machines, dishwashers etc



Household Batteries

All household, button, mobile phone and laptop batteries



Ink Cartridges

Keep in packaging if possible



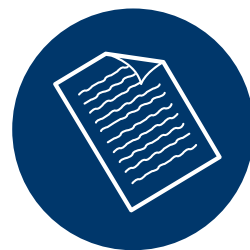
Plastic

Plastic bottles e.g. shampoo bottles, containers, toys, plant pots etc (no plastic bags)



Domestic Rubble & Ceramics

Small domestic quantities only



Paper

Newspapers, magazines, books, junk mail, old school books etc



Cardboard

Please ensure boxes are empty



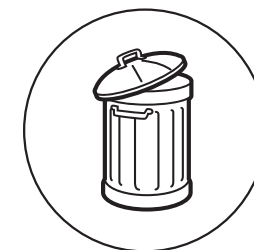
Paint

Home occupier only. Nearly full, sealed tins can be deposited in the community paint bin



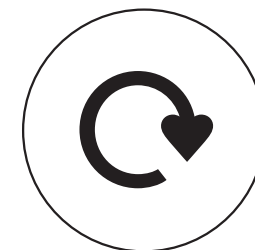
Gas Cylinders

Only domestic cylinders will be acceptable



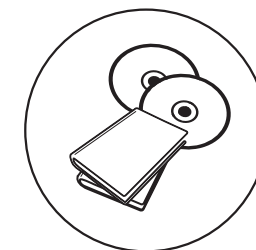
Household Waste Non-recyclable

Please ensure all material that can be recycled is removed, you may be asked to remove recyclable material and to put in the appropriate container



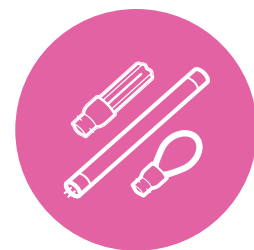
Charity & Community Reuse

Speak to staff for advice. Charity collection point on site



Books/ DVDs / CDs

Charity Heart Foundation



Fluorescent Tubes & Energy Saving Bulbs

Special care - Hazardous Waste (info leaflet available on site)



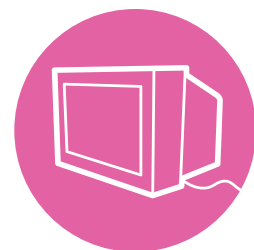
Small Electrical Appliances

Hair dryer/phones/ radio/toaster etc



Fridge & Freezers

Commercial appliance disposal charge £35



TV & Monitors

Ask for assistance with heavier appliances



Glass

Mixed glass bottles and jars



Green Waste

Japanese knotweed - this species should not be brought on site - consult with NIEA

For further information on what you CAN and CAN'T recycle visit:

www.midandeantrim.gov.uk/resident/waste-recycling

Recycling Centres

You are welcome to use any of the following centres:

Waveney Road Household Recycling Centre

Waveney Road, Ballymena, BT43 5BA

Sullatober Household Recycling Centre

10 Marshallstown Road, Carrickfergus BT38 9DE

Redlands Household Recycling Centre

Harbour Highway, Larne BT40 1AX

OPENING TIMES	April – September	October – March
Monday – Saturday	9am – 7pm	9am – 5pm
Sunday	1pm – 6pm	1pm – 5pm

Larne South Household Recycling Centre

Island Road Lower, Ballycarry BT38 9HB







OPENING TIMES	April – September	October – March
Tuesday, Wednesday, Thursday & Saturday	9am – 7pm	9am – 5pm

Glenarm Household Recycling Centre

Dickeystown Road, Glenarm BT44 0BA

OPENING TIMES	April – September	October – March
Wednesday & Saturday	9am – 7pm	9am – 5pm

Remember!

-  Please sort your waste before visiting the site, as this will reduce time and reduce potential landfill material.
-  Staff will, as necessary, inspect and examine waste brought onto site for disposal to meet licence requirements and to reduce amount of material landfilled.
-  The colour code in this leaflet will help guide you round the recycling centre.
-  Attendants are on site to advise and assist you.
-  Household Recycling Centres are for domestic waste only. **Commercial and industrial waste will not be accepted.**
-  Charity collection point on site for re-use items.

T: 0300 124 5000 (Option 0)
www.midandeantrim.gov.uk



**Mid & East
Antrim**
Borough Council